

Lifetime achievement: Paris Magdalinos, Architect

Paris Magdalinos arrived in New Zealand as a young refugee and left school when he was 14.

Through his own drive and talent, he became one of New Zealand's leading architects, colourful and flamboyant in both his personality and his architecture, running a Napier-based practice undertaking significant projects all over this country and indeed abroad.

Paris has had close ties to the Nightingale family for decades, and built a strong professional relationship with Resene in the late 1980s and early 90s as the NZIA National Awards Convener and NZIA Councillor responsible for Resource Development. This saw Resene partner the NZIA awards programme, helping to raise the profile of both organisations over the years.

The practice of PMA was established in its present format in 1989, after restructuring a larger multi-disciplined design office. Since then, the practice has consolidated in Napier, while expanding throughout New Zealand.

Epitomised by strong images, forms, colours and shapes – Paris fervently believed in John Ruskin's words that "all architecture proposes an effect on the human mind, not merely a service to the human frame".

Using colour both to articulate forms and inject an essential humanity and personality to the architecture the use of the colour became a key signature. At times the resulting custom colour mixes presented an interesting challenge for the local Resene ColorShops and painting contractors – but through Paris' vision the attention to hue, chromacity and value, created something memorable.

PMA continue to bend over backwards to ensure their buildings do more than just enclose space, but they do so with dignity, conviction and quality, at a realistic cost.

PMA do this because it preserves their legacy and that of Paris, and their client's reputation for excellence, their aspirations for quality and their sense of place in the community.



Architects: Paris Magdalinos Architects
www.pmachitects.co.nz

 Resene Whiteout

Architect's Office

PMA, Napier



Royal Heath

Bright Red

Pizazz

Alabaster



Resene Total Colour Lifetime Achievement Award





Food Centre of Innovation

Eastern Institute of Technology, Napier



Architectural Specifier: Paris Magdalinos Architects
www.pmarchitects.co.nz

 Resene Whiteout

Resene Total Colour Lifetime Achievement Award





Mexican Red

Corvette

Catalina Blue

Red Berry

Waikawa Grey

Spindle

Solitude

Resene Total Colour Lifetime Achievement Award

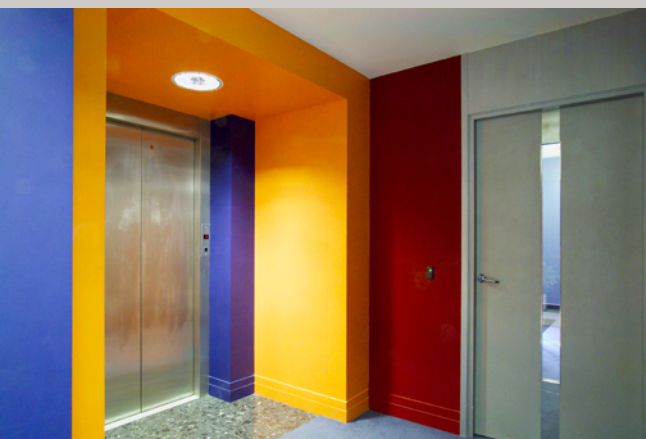


Gisborne Courthouse



Resene Total Colour Lifetime Achievement Award





- Waikawa Grey
- Lucky Point
- Pohutukawa
- Pizazz
- Deep Teal
- Morning Glory
- Pearl Lusta
- Waterloo
- Black White
- Seashell

Architectural Specifier: Paris Magdalinos Architects
www.pmarchitects.co.nz

Resene Total Colour Lifetime Achievement Award





- Aluminium
- Colins Wicket
- Black White
- Link Water
- Echo Blue
- Ship Cove

Hague Building

Napier Girls High School

Architectural Specifier: Paris Magdalinos Architects
www.pmarchitects.co.nz



Resene Total Colour Lifetime Achievement Award





 Resene Whiteout

Resene Total Colour Lifetime Achievement Award



Walker Building

Napier Girls High School



- Lightning Yellow
- Sapphire
- Sea Green
- Milk Punch
- Cinder
- Bay of Many
- Golden Sand



Resene Whiteout

Resene Total Colour Lifetime Achievement Award





Architectural Specifier: Paris Magdalinos Architects
www.pmarchitects.co.nz

Resene Total Colour Lifetime Achievement Award





Blast
Grey 2

Blast
Grey 3

Shiraz

Merino

Alabaster

Licorice

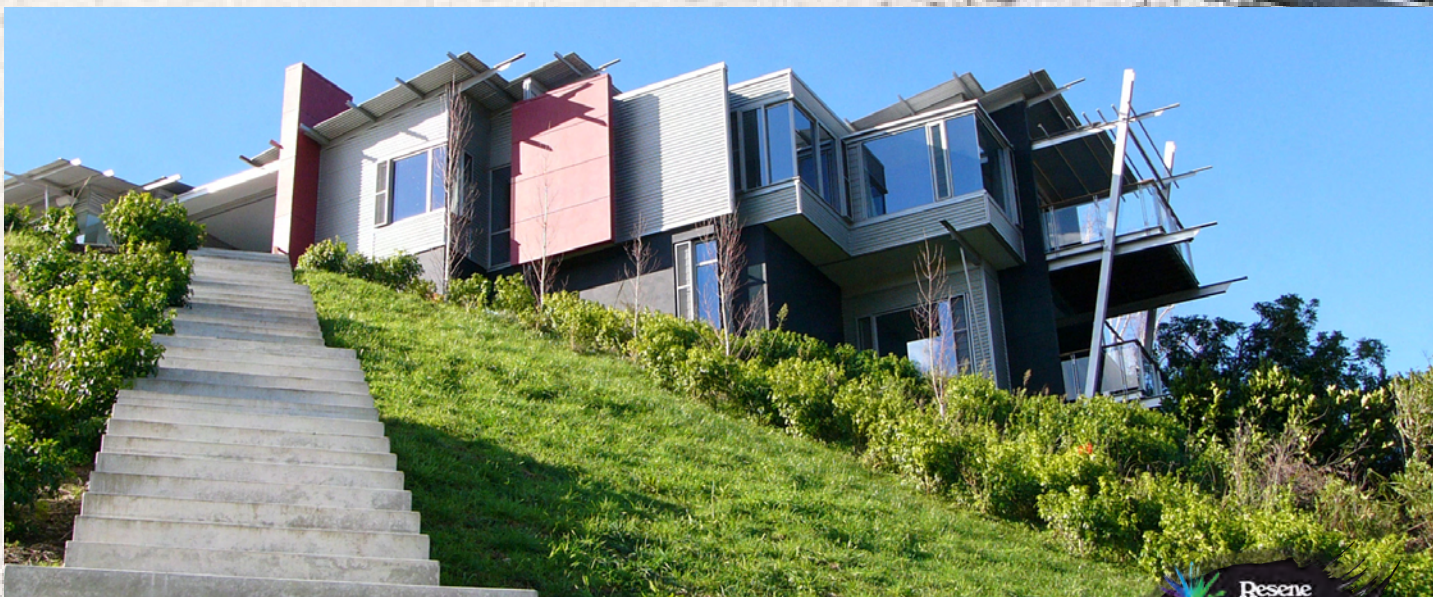


Architectural Specifier: Paris Magdalinos Architects
www.pmachitects.co.nz

Resene Total Colour Lifetime Achievement Award



House at Ohiti



Resene Total Colour Lifetime Achievement Award



Ruatoria Hearing Centre



Resene Whiteout





- Monarch
- Cove Grey
- Tolopea
- Tranquil
- Tawny Port
- Wine Berry
- Ship Cove
- Fountain Blue
- Ghost
- Gun Powder

Architects: Paris Magdalinos Architects
www.pmarchitects.co.nz

Resene Total Colour Lifetime Achievement Award

