

White Hart Hotel

New Plymouth



Merino

Stack

Bali Hai

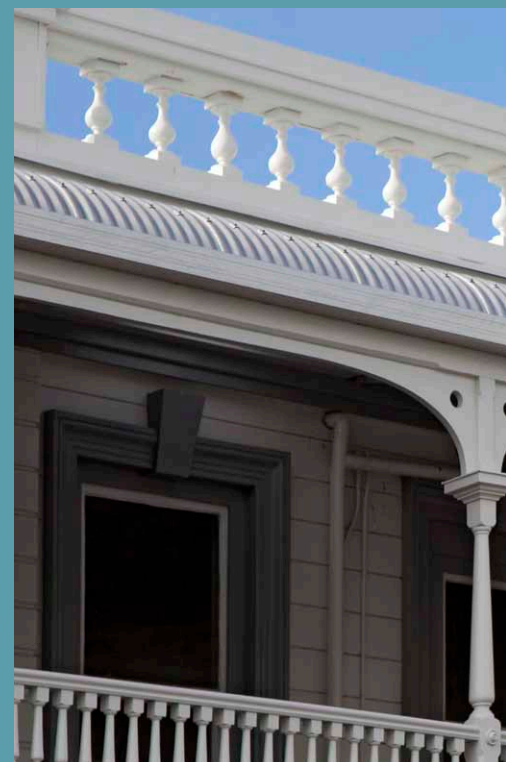
As part of the re-development of the iconic 1886 White Hart Hotel and its Heritage Category 1 street façade, a full paint scheme was developed: Rebirth of the New Plymouth White Hart Hotel in white next to the City Clock Tower and the Govett Brewster Gallery, both also white:

The full timber body of the old Hotel is off-white with a green oxide undertone Resene Merino, which suggests a patina despite the cleanliness of the white (the building was dirty yellow for decades). The white is underlined by an armament grey, serious and earnest, Resene Stack, applied on horizontal lines linking all the crafted timber windows and their keystones together. Touches of unique blue, moody and mysterious, Resene Bali Hai are used in the rosettes and squares, large columns and doors at street level, and come to

soften this otherwise strict feel. Paint finishes are high gloss using Resene Hi-Glo waterborne paint and Resene Enamacryl gloss waterborne enamel.

While the street façade has been fully protected, repaired and refreshed, the inward façade onto the courtyard is now a contemporary interpretation of the Old Hotel in opal white polycarbonate in which the heritage native timber window frames are inserted into. An original fire egress timber balcony on the upper floor was re-interpreted as a large circulation in raw timber, dressing the new opal white façade with clean slats.

The contemporary mill finish aluminium corrugate, the opal polycarbonate and the row sustainable timber screens, complement effortlessly the heritage façade colour scheme



Resene Total Colour Commercial Exterior Colour Maestro Award









 Resene Awash

Architectural Specifier: Atelierworkshop www.atelierworkshop.com
Building Contractor: Street & Cook Construction Ltd
Painting Contractor: DR (Jack) Gray Ltd
Photographer: Russell Kleyn www.russellkleyn.com

