



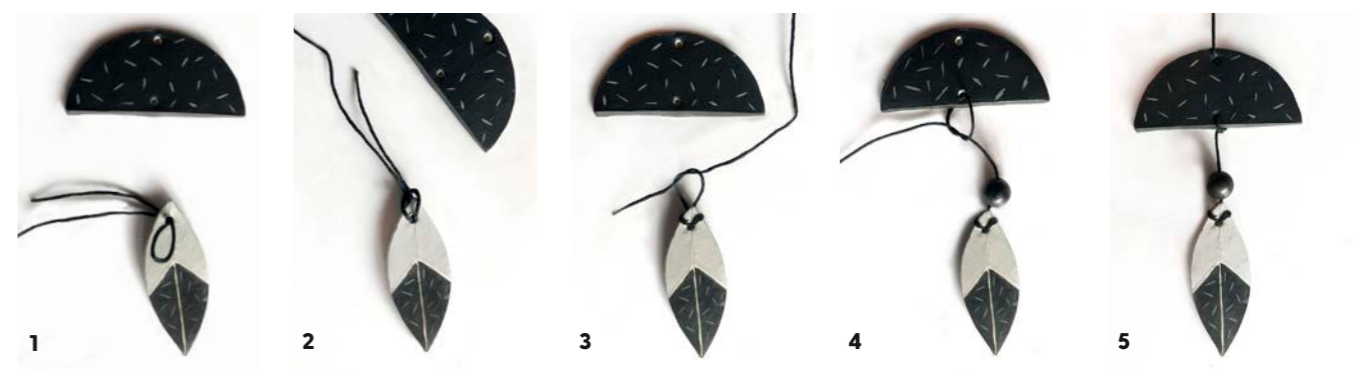
Picture this

Make a modern display of your favourite pics with this cute photo wall hanging. Marsha Smith shows you how.

WHAT YOU NEED

- Favourite photos (I used pics measuring 7.5cm wide x 10cm long)
- Resene testpot paintbrush and testpots in:
 - Resene Noir
 - Resene Silver Chalice
 - Resene Eighth Bokara Grey
- 50cm length wooden dowel
- Compass, pencil and ruler
- A4 piece of hard cardboard
- Craft knife
- Rolling pin
- White baking clay (or air drying clay)
- Wooden skewer and toothpicks
- Fine art brush
- 4 small, round wooden beads
- Hemp cord in black (or similar)
- Glue
- Resene Washi tape

- 1 Paint wooden dowel with two coats of Resene Noir, leaving it to dry between coats.
- 2 Using your compass and pencil, measure and draw an 8.5cm-diameter semicircle on the base of your cardboard. Also draw a leaf shape, 7.5cm long. Cut out both shapes with your craft knife. These are the templates for the clay shapes.
- 3 On a clean, flat surface, roll out baking clay to approximately 6mm thick. Place templates on top of the clay and use the craft knife to cut out 4 leaves and 4 semicircles (pic A).
- 4 Use a wooden skewer to pierce centrally positioned holes in the top and bottom of each semicircle and one in the top of each leaf. Make sure they aren't too close to the edge as that would create a weak point. I scored some leaf marks into my clay with the blunt edge of my knife for more detail. Bake clay shapes according to instructions on the packet.
- 5 When the clay shapes are cool, you can paint them (pic B). I did a simple leaf-like pattern and used a very fine paintbrush to add flecks of Resene Silver Chalice to the darker Resene Noir.



- 6 Stand 4 toothpicks in a leftover piece of clay and sit a bead on top of each one (pic C). Paint beads with Resene Noir. Allow to dry.

TIE IT TOGETHER:

- Cut 4 x 120cm lengths of hemp cord.
- Fold a length of cord to create a loop, then thread the loop through a clay leaf from the back to the front (pic 1).
- Thread the two ends back through the loop and pull tight. Tie a double knot to secure (pics 2 and 3). Trim off the shorter piece of cord.
- Thread on a painted bead.
- Now thread the cord through the bottom hole of a semicircle, from back to front, and secure with a double knot, leaving about 5cm of cord between the bead and the semicircle (pic 4).
- Run the remaining cord up the back of the semicircle, thread it through the top hole and tie in place with another double knot (pic 5). Repeat with the remaining cord and clay shapes.
- Place painted dowel down on your work surface and position the cords, evenly spaced out, along the top.
- Work out how many photos you want to display on each line and whether you want them all the same length or at different lengths. Once the lengths have been decided, wrap cord around the dowel at least four times and secure with a double knot. Cut off any excess cord and glue the end onto the back of the dowel.
- Finish by tying and glueing another piece of cord so you can hang your masterpiece.

- 7 All that's left now is to plan out your photo layout and use strips of Resene Washi tape to attach photos to the cord. The removable tape makes it easy to change your photos without damaging them. Hang and admire!

Complete your look by painting an old planter to match. Give it a clean and a light sand, then use Resene Washi tape to help make those clean, straight lines before painting.



PHOTOGRAPHY BY BAUER STUDIO; BACKGROUND PAINTED IN RESENE ETHEREAL.