

Resene

NEWS

Resene Paints Limited, P.O. Box 38 242, Wellington Mail Centre. Tel +64-4-577 0500, Fax +64-4-577 0664.
Internet Home page <http://www.resene.co.nz> Technical Advice 0800 Resene (737 363)

safe landing with Resene

Auckland Airport's three year redevelopment of the Jean Batten International Terminal has transformed the appearance of the terminal and more than doubled its size. This \$180 million project has created an exciting and efficient environment for travellers with more duty free shops, new food outlets and 80 check-in counters improving passenger flow. One hundred tonnes of the terminal's exposed structural steel was protected from its aggressive marine environment with a unique Resene Ameron high performance coating system. Originally, a four coat paint system was selected to provide long term corrosion protection and aesthetic appeal to the structural steel. Strict time constraints were placed on Dixon Hadden Structural Steel, which saved both time and cost using a two coat Resene Ameron polysiloxane system without compromising protection or durability. Ian Rolfe-Vyson of Resene Paints specified an abrasive blasting to near white metal followed by Dimetcote 9 Inorganic Zinc Silicate Primer and finishing with PSX 700 Epoxy-Siloxane. PSX 700 combines the barrier properties of an epoxy mastic with the

This unique feature of the product and the ability to be applied by brush also enabled site touch-up to a quality almost indistinguishable from the original spray application.

A superb high performance Resene paint system applied to the terminal's exterior compressed fibre sheeting comprised Quick Dry Acrylic Primer followed by Uracryl 401 and Uracryl 403 providing unsurpassed durability and resistance to its excessively harsh marine environment.

Countless interior Gib Board walls have been sealed in Resene Broadwall 3 and topcoated with Lumbersider for protection in the high traffic areas and the ceiling fibrous plaster tiles were sealed with Sureseal and finished in Flatcote.

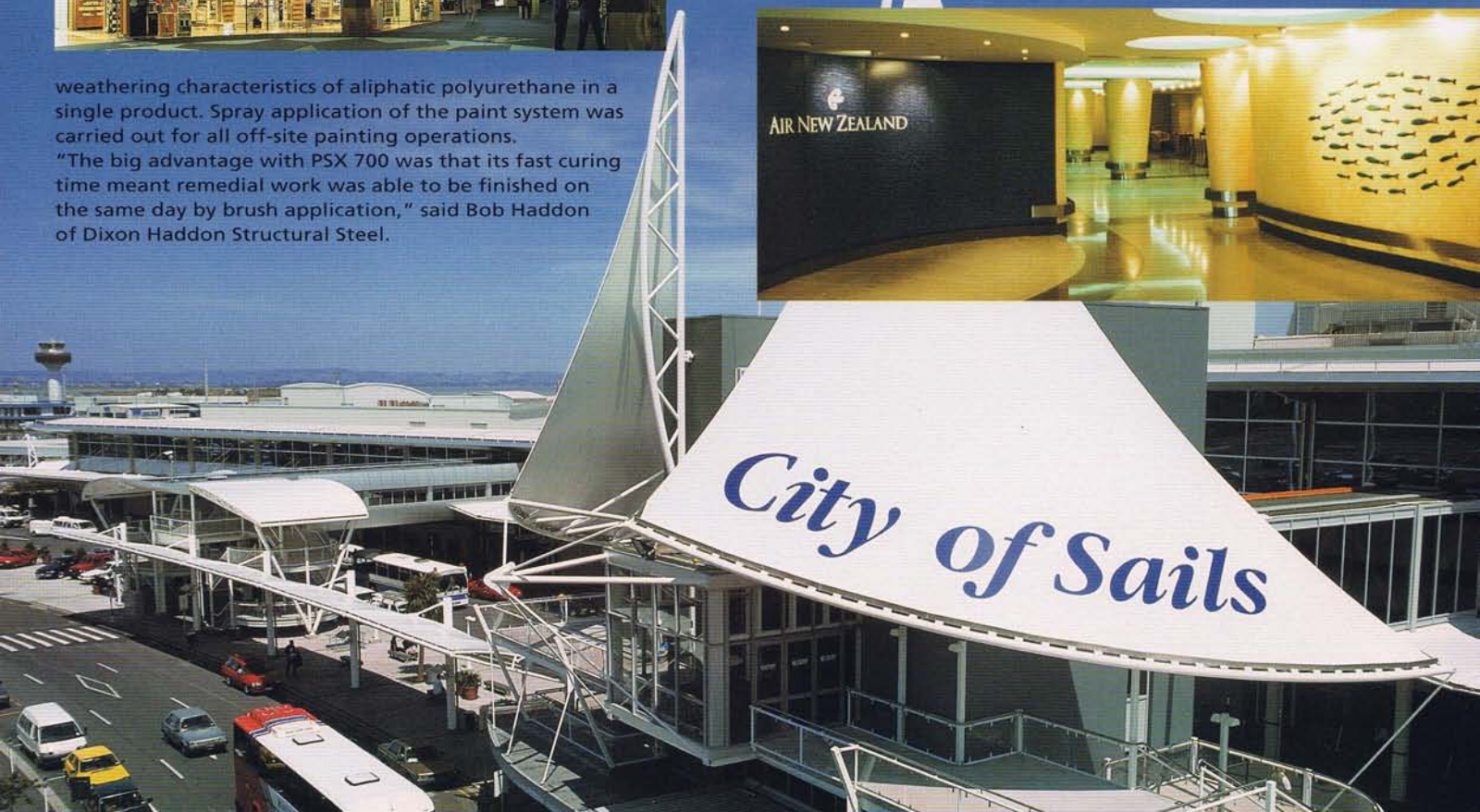
T.B.S. Fleming was contracted to undertake most of the exterior decorative work as well as shops, public spaces, administration offices and plant rooms. Graham Ilich Painters' contract included stairwells and duty free shops. Wi Pere was contracted by Tetrad Design Group to undertake the interior and special effects painting in the Air New Zealand premier lounge, premier check-in and terminal offices.



weathering characteristics of aliphatic polyurethane in a single product. Spray application of the paint system was carried out for all off-site painting operations. "The big advantage with PSX 700 was that its fast curing time meant remedial work was able to be finished on the same day by brush application," said Bob Haddon of Dixon Haddon Structural Steel.

ARCHITECTS: Stephenson & Turner (architects for the main terminal and interior fitout for main public spaces) Tetrad Design Group (fitout architects for the Air New Zealand tenancy spaces) MAIN BUILDING CONTRACTOR: Hawkins Construction
STRUCTURAL STEEL FABRICATOR: Dixon & Haddon Structural Steel
PAINTING CONTRACTORS: T.B.S. Fleming, Graham Ilich Painters and Wi Pere Contracting Painting
RESENE PAINTS: Auckland industrial coatings representative Ian Rolfe-Vyson and branch managers Rod Wain and Ingel Janssen.

Behind: The new exterior, now dominated by two metre high sails, sets the theme linking the public areas within the terminal.
Left: Airside shopping mall.
Below: Air New Zealand premier check-in lounge.





majestic fitout

Structural steel, zinc and copper finishes provide subtle nautical imagery.

The fitout of the three top levels of Wellington's Majestic Centre has recently been completed to much acclaim. A minimalist design approach has been used to maximum effect in the two lower levels which form the main working environment. Here, a restrained palette intercepted with bold planes of colour, maple and rewa rewa timbers, steel, zinc and copper typifies the interior spaces. The double height top level combines multi-purpose work and meeting rooms and the design recognises the dramatic space and extensive view. In developing the blast finish on the interior steel columns and lintels for the fitout, Craig Craig Moller, assisted by Rob Lavender of Resene Paints, specified Resene Ameron Imperite I.F 503 Blast Grey over an epoxy primer. "This system reproduces the natural texture of blasted steel without the problems that clear finishes present, applied to maintain the appearance of freshly blasted mild steel", David Wingate of Craig Craig Moller said. Red Berry, Cyprus, Marzipan and Everglade are a few of the Resene colours used on walls that direct public movement amidst the predominance of white painted walls, intended as a background to display a considerable collection of New Zealand art.

ARCHITECT: Craig Craig Moller; PAINTING CONTRACTOR: Paul Reddish Decorators;
BUILDING CONTRACTOR: Fletcher Construction Interiors; RESENE PAINTS: Auckland architectural services manager Rob Lavender and Wellington architectural representative Mike James.

a yen for Resene

Fujinomiya City in Japan has experienced first hand good New Zealand architecture and the quality of Resene Paints in its new hair salon, Top Style Hair Design. John Little of Ambienti Architecture & Design won the 1997 James Hardie Innovation Award with his salon design that also won two other national awards. The salon deviates from its New Zealand counterpart with the addition of a facial clinic, crèche and kimono dressing room. Components, from framing through to surface coatings were transported to Japan by container for construction and painting by a team of New Zealanders. The use of interior Gib Board surfaces sealed in Resene Broadwall 3 followed by Zylone Sheen, in conjunction with Lustacryl Semi-Gloss Waterbased Enamel, over Quick Dry Acrylic Primer Undercoat for the trim, allowed a simple backdrop for the client's Italian furnishings. Exterior Harditex was sealed and painted in Resene Resitex Coarse in the chosen colour Stromboli.

Top Style Hair Salon with Mount Fuji in the background.

ARCHITECTURAL DESIGNER: Ambienti Architecture & Design;
INTERIOR DECORATOR: Colours by Terry Walsh Interiors;
RESENE PAINTS: Tauranga area manager Roger Swannell.



Lobby view to Wellington Foyer.

Te Papa! our place our paint

After four years of construction, New Zealand's new \$317 million Jasmx-designed national museum, Te Papa, opened its doors on time and on budget.

Te Papa is even bigger on the inside than its monolithic stature on the outside would suggest.

Due to its sheer size, painting contractors Kensington Associates applied enormous quantities of Resene paints to cover 35,000 sq. metres of building area.

Up to 13 painters have worked with partners Denys Kensington and Gary Nelson for the past two-and-half years with fantastic results.

These include squillions of matai veneer wall panels coated first with Multishield+ allowing perfect drying for the subsequent HD Polysatin; acres of Gib Board walls and ceilings primed with Quick Dry and topcoated with Zylone 20 for a dead flat look and miles of galvanised iron ducting primed with Galvo-Prime and topcoated with Lumbersider.

Resene Sidewalk was used on the concrete floors in the museum's hallway and storage areas and Lumbersider has been applied to the undercover carpark concrete walls and panels.

ARCHITECTS: Jasmx Architects (lead consultant architects), Stapleton Architects (fitout architects);
PAINTING CONTRACTOR: Kensington Associates;
BUILDING CONTRACTOR: Fletcher Construction;
RESENE PAINTS: Wellington architectural representative Mike James.



Marae for all.

Together with a team of young artists, Maori artist Dr. Cliff Whiting has created a contemporary marae for the year 2000 and beyond.

Dr. Whiting has challenged all traditional Maori protocol by shifting away from the conventional marae colours - red, black and white.

Modern materials such as customwood have been twisted into all sorts of shapes, representing all cultures in New Zealand, and painted with Resene Lumbersider in a full and vibrant range of Resene colours.

chocks away

A roof canopy over the entrance and two winged sections with tensioned membrane panels, replicating biplane wings of a bygone era, are the key features of Origin Pacific Airways terminal in Nelson. The new privately owned Origin Pacific Airways charter airline has recently begun operations with four Jet Stream 31s, serving 20 airports in New Zealand. This building distinguishes itself by its light steel structure and aerofoil shape roof creating an aeronautical theme to the building's structure.

Warm earthy colours mimic the nearby hills providing a visual link with the building's exterior and interior colour scheme. The Resene paint system used on the exterior structural steel was a zinc rich primer, Dimetcote SPZ, followed by Amerlock 400 and topcoated in Uracryl 403. This high performance paint system has excellent long term corrosion protection and aesthetic properties. Exterior Titan panels have been coated with Resene X-200 Waterproofing Membrane followed by Hi-Glo. The concrete hangar floor was cleaned and acid etched subsequent to a coating in the unique Resene Ameron Lockshield system - Amerlock 400 followed by one coat of Amershield.

ARCHITECTURAL DESIGNER: Menzies Design;
PAINTING DECORATOR: Fifeshire Decorators;
BUILDING CONTRACTOR: Ian McCully Builders;
RESENE PAINTS: Nelson branch manager
Richard Haynes.

View from East.



read all about it

The sobriety of the former Auckland Central City Library has been erased by a vibrant sweep of colours that herald a new life for this building. Bold and uplifting Resene colours including Hot Chile, Nile Blue and Guardsman Red have been used to create focus to service zones amongst the library's various collections. The design by architects Creative Spaces caught the eye of judges in last year's NZIA-Resene Regional Architecture Awards and won a Resene Colour Award for the innovative and creative use of colour. In its regional award citation, the judges noted: "The alterations have inserted exciting, almost shocking colours, not usually connected with a library environment." The Resene paint system specified for interior Gib Board walls was Broadwall 3 Acrylic Wallboard Sealer and topcoated in Zylone Sheen and Lumbersider. The ceiling was painted in Resene Zylone 20 and the jarrah hand railing was finished in three coats of Qristal Clear Poly-Satin.

ARCHITECT: Creative Spaces; PAINTING CONTRACTOR: Ray Crawshaw;
BUILDING CONTRACTOR: Canam Construction.

The new Heritage Floor incorporates Maori, Polynesian and European culture into its design.



View of the Crosson office building from Augustus Street.

working on the edge

Clinging to a clifftop site in Parnell, Crosson Architects' office building features materials, forms and expressive colours, to satisfy the architects who largely occupy it. Its closed, black painted back, open green glass front, contained by a painted steel frame and pressed aluminium cladding at both ends, acknowledge both city and landscape. Ken Crosson of Crosson Architects concedes that this commercial office building reinforces the "modernistic and forward thinking attitude of the work we practise". The black skeletal frame has been painted in a Resene Ameron paint system to protect the mild steel from corrosion in Auckland's marine environment. Ian Rolfe-Vyson of Resene Paints specified an abrasive blast to a standard of SSPC-SP10 followed by Dimetcote 9 Inorganic Zinc Silicate Primer to a dry film thickness of 75 microns and brush topcoated with PSX 700 Epoxy-Siloxane on site to a dry film thickness of 175 microns. Its black, plastered facade has been sealed with Resene X-200 Acrylic Waterproofing Membrane and topcoated with Lumbersider, while bold Resene colours have been used in the interior to identify various elements.



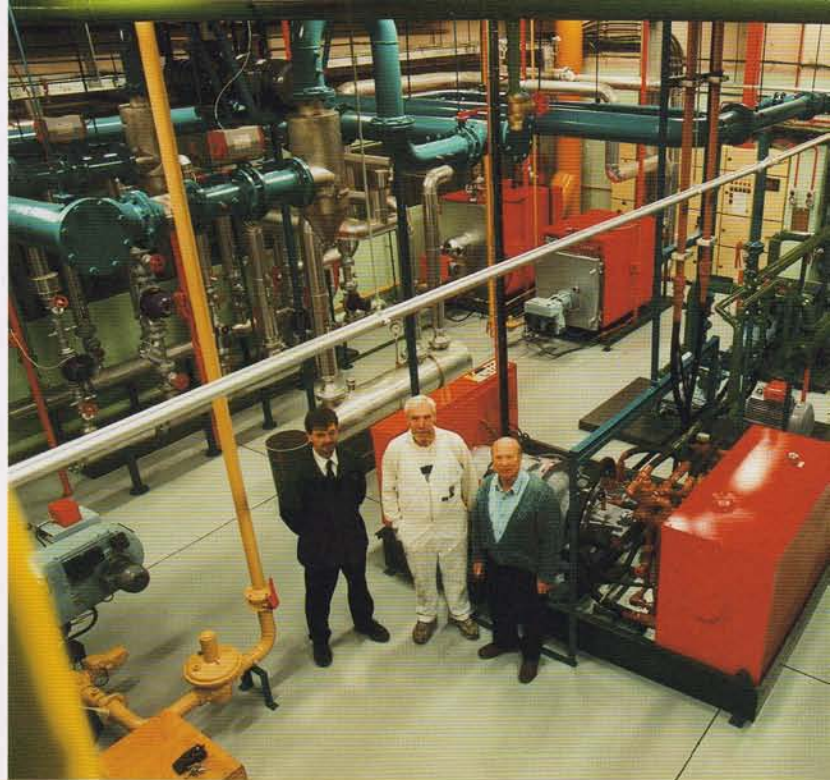
Minimalist decor intercepted by bold colours epitomise the interior space.

ARCHITECT: Crosson Architects; STRUCTURAL STEEL FABRICATOR: Dixon & Haddon Structural Steel; BUILDING CONTRACTOR: Rob Piacun Ltd;
RESENE PAINTS: Auckland industrial coatings representative Ian Rolfe-Vyson and architectural representative Barrie Crawford.

all the colours of the rainbow

A new upbeat image for a plant room at Wellington's Industrial Research laboratories is the result of a recent interior maintenance and repaint project undertaken by Dave McKinlay Decorating. Colours selected for the plant have been colour-coded to the international pipeline identification standard. Moreover, Dave McKinlay went the extra seven yards and painted the plant's disposal bins in McKinlay clan tartan from leftover paint. The Resene Paint system used on the steel pipes was Rust Arrest followed by two coats of Hi-Glo. Steel machinery has been primed with Resene Vinyl Etch because of its fast drying properties, followed by tinted Enamel Undercoat and topcoated with Super Gloss. Resene Smooth Surface Sealer was used as an 'adhesive primer' pre-treatment on the difficult-to-coat, shiny concrete floors and topcoated with Sidewalk Paving Paint with SRG grit in parts for a non-slip effect.

From left: Hutt Valley trade representative Allan McMillan, painting contractor Dave McKinlay and Industrial Research assets manager Eric Speck.



Brushstrokes

new Quick Dry wins blind testing



Resene re-launches Quick Dry as a new superior formulation acrylic primer undercoat with improved sanding and flow properties. The primary reason for reformulating Quick Dry was to eliminate brush marks left on interior/exterior timber surfaces under Enamacryl and Lustacryl.

Resene put the product to a blind testing alongside similar products in the market and Resene Quick Dry was rated as being far superior in quality and performance by

the panel of judges. There is no price increase and the superior formulation Resene Quick Dry is now available in can sizes of ten litres and below.

re-branded sections in MasterSpec

After a year on MasterSpec, Resene Paints is now live on MasterSpec Basic which is establishing itself as being the national specification system for residential building projects. MasterSpec Basic is a new product designed for residential and small commercial work, taking the place of work section VO1R in MasterSpec Standard.

Since its launch, MasterSpec Basic is being used by 150 subscribing organisations with 600 technical design personnel registered.

The key benefits in subscribing to either MasterSpec Basic or MasterSpec Standard are:

- Receiving the most up-to-date information available.
- Cost efficiency in subscribing to the preferred specification package.
- Both MasterSpec Basic and MasterSpec Standard are more comprehensive, carry expanded options and are simple to use.

Resene Paints One Line Specifications are listed in MasterSpec Basic for residential and small commercial work and MasterSpec Standard V52R for larger project work.



water based enamels a winner

Resene interior/exterior water based enamels, Enamacryl and Lustacryl, have proved to be a huge success with painters and decorators. So much so, that these water based enamels have been nominated by the voice of the painting trade, New Zealand Painting Contractors Association, as the winner of the association's Best New Product category in the 1997 National Award Programme. Launched in 1996, Resene Enamacryl and Lustacryl flow out to a smooth surface and when they are fully dried, they have excellent block resistance, grease resistance and non-yellowing in dark and light areas. Other benefits include rapid drying and fast recoat times.

For best results, apply over Quick Dry Acrylic Primer Undercoat using the new Pal Legend brush, spray or synthetic fibre roller.



take a memo

Our thanks to those who expressed an interest in the Architects Memo which Resene re-introduced in February. The Architects Memo is the medium through which our technical director, Colin Gooch, communicates interesting information covering problem areas in the coating of buildings; describes new trends in the industry; introduces technically new products and to generally shine some light in the more dimly lit areas of paint technology. The plan is to keep the memos coming bi-monthly. Copies of some of the classic Architects Memos of the past which remain relevant have been updated and are available on request. Memos will also be available on the Internet by logging into <http://www.resene.co.nz>.

Resene News is published by the Resene Paints Marketing Department. For further information about any of the products featured in this issue of Resene News, please contact the Resene Paints Marketing Department, 32-50 Vogel Street, Naenae, New Zealand, Telephone (04) 577 0500, Fax (04) 577 0664. Every effort has been made to ensure accuracy in this publication, but Resene accepts no liability for any errors of fact or opinion expressed herein.

Resene - the paint the professionals use

This publication is printed on 50% recycled paper.