

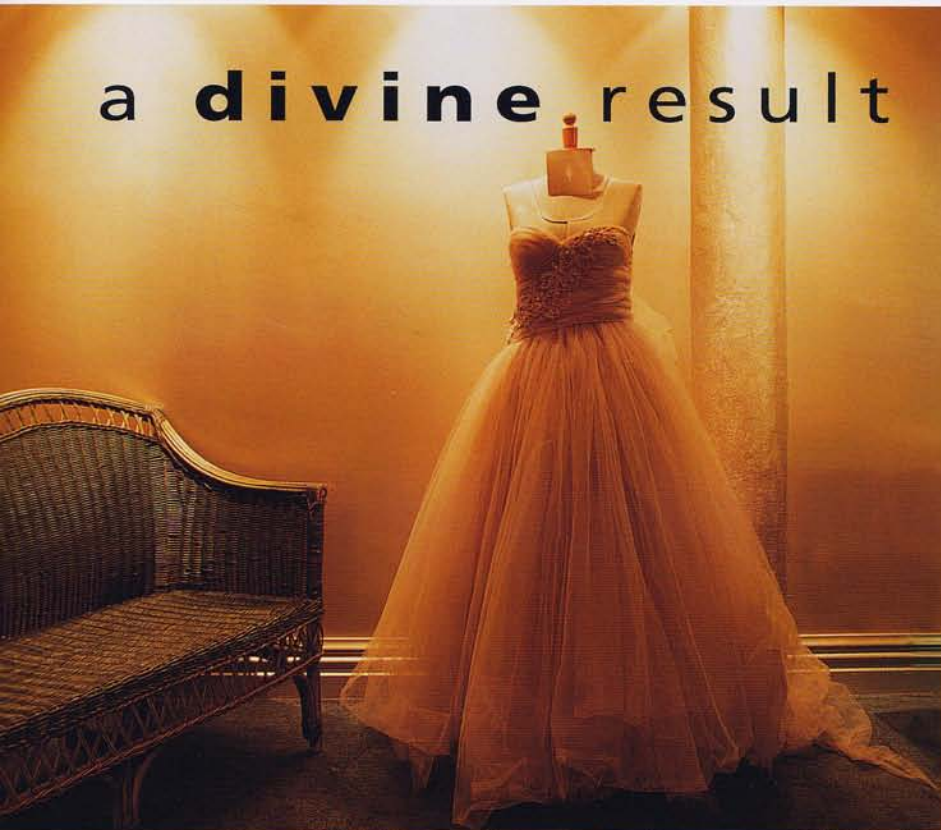
Resene

NEWS

Resene - the paint the professionals use

Resene Paints Limited PO Box 38 242 Wellington Mail Centre Tel +64-4-577 0500 Fax +64-4-577 0664
Internet Home Page: www.resene.co.nz Email: advice@resene.co.nz Technical Help-Line: 0800 Resene (737 363)

a divine result



Fashion using sparkling metallic finishes to emphasise design, has been used in the creation of an elegant and upbeat interior shop fitout - Angel Divine.

Queenstown-based shop owners Trudy Munro and Kristen O'Sullivan Peren selected a metallic finish on all the shop walls in order to emphasise the beauty of the high fashion garments and to provide complexity and depth to the stylish feel of this sparsely decorated shop space.

"Not only does the metallic finish provide a wonderful display for our clothing range," says Mrs Munro, "it also picks up and reflects the colours of the garments."

The Resene system comprised a coat of Resene Lumbersider followed by Enamacryl Metallic for the walls in a custom mixed colour - Divine Pink. This was offset by a white painted ceiling and concrete floors protected with Resene Concrete Stain clear glaze.

PAINTER: John Fenton Ltd; RESENE PAINTS: Queenstown sales representative Annette Gin.

◀ A dazzling interior shop fitout.

razzle dazzle of the movie business

The very latest word in cinema - Imax, has come to Auckland. Staged in the new \$75 million Force Entertainment Centre next to the Aotea Centre, the Centre offers an eight-storey 3D Imax screen and 12 conventional cinemas on two levels. The Centre comes complete with a Planet Hollywood restaurant, a range of cafes, and a three-level bar. At the heart of it all is the atrium where visitors can gather before disappearing further into the Centre.

If its exterior looks like a collision of unlikely forms, it does at least reflect the options within. Everywhere, angles, materials and paint finishes accentuate activity and excitement.

One thousand tonnes of interior steelwork were painted in Resene Zincilate followed by Uracryl 404 for an extremely durable low sheen finish, while 75,000 sq. metres of Gib were coated in a combination of water-based enamel Lustacryl, Zylone 20 Flat and Zylone Sheen. Resene X-200 Waterproofing Membrane followed by Lumbersider was used on the exterior surfaces.

ARCHITECT: Walker Co-Partnership; BUILDER: Watts and Hughes Builders; PAINTER: Graham Ilich Painters; STEEL FABRICATORS: Dixon & Haddon Structural Steel; RESENE PAINTS: Auckland business development manager Daryl Spinetto and industrial coatings representative Ian Rolfe-Vyson.

The design of the atrium firmly acknowledges it is in the movie business. Photography by Michael Ng. ▶



communicating through colour

First impressions count – which is why large corporate players pay meticulous attention to the corporate image their premises project. Located on the corner of Karangahape Road and Hereford Street in Auckland, the 15 level Telecom Tower has recently had an exterior repaint. An understated palette of just one colour - Resene Hi-Glo tinted to 'Sea Fog' has sharpened the exterior imagery of this building, projecting a modern and clean image for Telecom. The interior refurbishment is in progress. A different interior colour theme, in Resene paints, has been selected for every floor.

ARCHITECT: Craig Craig Moller; **OWNER:** Amtrust Pacific; **PAINTER:** Andrews Property Services for the exterior; **PROJECT MANAGER:** Peter Holmet Consultancy; **RESENE PAINTS:** Auckland business development manager Darryl Spinetto.



Telecom transformed.

stadium gets a lift

Fans have watched with interest as the roof of the QE II Stadium in Christchurch has been elevated and replaced. This work was carried out as a result of a leaking roof causing damage to roof cavity. This provided an ideal opportunity to repaint the steelwork before the new roof was laid. The job involved stripping off the old galvanised iron roof, section by section, and grinding off the rust on the mild steel trusses. The steelwork was then primed and topcoated in a high performance coating system for long-term corrosion control – Resene Alumastic. The stadium roof has been re-clad and elevated at one end so that water flows freely into down pipes.

MAIN CONTRACTOR: Naylor Love Canterbury; **PAINTER:** Dixon & Dixon Decorating; **STRUCTURAL ENGINEER:** Holmes Consulting Group; **RESENE PAINTS:** Christchurch customer services representative Tony Walter.

▼ *Aerial view of the QE II Stadium in Christchurch.*



Dunedin's



inspired by nature

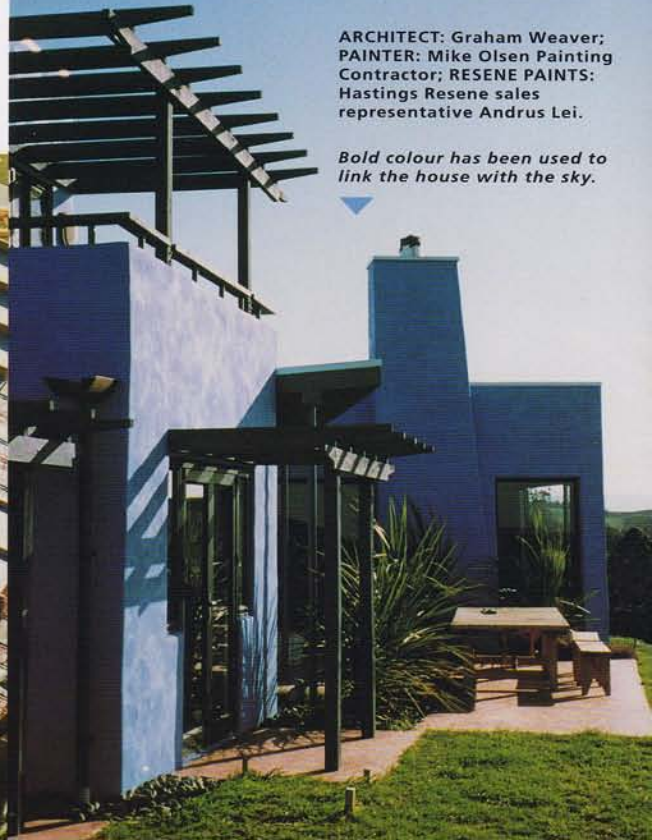
Recent emerging trends in interior/exterior wall cladding are the aged textured sandstone finishes and washed cement renders in dark neutrals and rich terracottas through to natural Mediterranean colours. Built on top of a hill, a five-bedroom Hawke's Bay house, nestled in amongst a grove of olive trees, has been painted in Resene Paints' new sandstone finish – Resene Sandtex.

A tone-on-tone blue colour palette has been selected by the owner for the exterior of the house to emulate the deep blue Hawke's Bay skies.

A washed out effect has been achieved with an undercoat of Resene X-200 Waterproofing Membrane tinted to 'Havelock Blue', followed by a topcoat of Sandtex tinted to a darker 'Marina' blue, applied in a crow's foot style. Painter Mike Olsen said that the desired finish was easily accomplished using a standard four-inch pure bristle brush.

ARCHITECT: Graham Weaver; **PAINTER:** Mike Olsen Painting Contractor; **RESENE PAINTS:** Hastings Resene sales representative Andrus Lei.

Bold colour has been used to link the house with the sky.



disappearing gun



Beneath the peace of the Royal Albatross colony lies historic Fort Tairaroa – site of the Victorian era fortifications set up to protect Dunedin in 1886 from the Russians. Centre piece of this fort is the 1886 Armstrong Disappearing Gun, one of the first breech loading guns to be built. Today, it is the only model of its type in the world in its original gun pit, still in working order. In 1998 refurbishment of the gun commenced. A high performance Resene paint system was applied to the gun comprising a first coat of Alumastic and topcoating in Uracryl 403. The gun emplacement was primed in Resene Armourcote 220 and finished in Polymeric AV8 providing excellent durability and resistance to its excessively harsh marine environment. "Ongoing maintenance will be minimised with the Resene paint system," says general manager for Otago Peninsula Trust Bruce McCormick. "The Resene team in Dunedin have been really great. Their technical expertise and friendliness have been first class." The Disappearing Gun and underground History Museum is at Tairaroa Head, just 50 minutes drive down the Otago Peninsula from Dunedin.

CLIENT: Otago Peninsula Trust; **RESENE PAINTS:** Southern branch manager Nelson Dickson.

◀ *This 5-ton gun could fire a 6 inch, 100 pound shell up to 5 miles every minute with considerable accuracy.*

a winning combination

Queenstown's first casino, Wharf Casino located on the Steamer Wharf, opened its doors to both tourists and local people in September.

Following an interior modification, the small boutique casino has been sensitively refurbished, adopting the style of an elegant stately home crossed with a London gaming club.

Colour has been carefully selected to create space in this one room establishment. Resene Lumbersider tinted to 'Cove Grey' has been used on the walls with an additional gold paint effects finish on the columns. This has been contrasted with timber panelling protected in Resene Qristal Poly Satin and Zylone 20 Flat tinted to 'Bordeaux' in the lobby and 'Colonial White' for the ceiling.

FITOUT & INTERIOR DESIGN: Greg Hunt; **CONTRACTOR:** Millbrook Design; **PAINTER:** Pitches & Whyte Decorators; **RESENE PAINTS:** Queenstown sales representative Annette Gin.

Wharf Casino capturing a boutique casino atmosphere. ▶



fresh feel **W**ellington's new Pak'n Save in Kilbirnie has been painted in its striking corporate colours with Resene Paints' newly introduced Resitex Medium. Resene Resitex Medium is a subtly textured coating

that fits in between Resitex Standard and Resitex Coarse. Strong Pak'n Save colours have been achieved using an additional coat of Resene Lumbersider.



ARCHITECT: Tse Group; **BUILDER:** Armstrong Downs Construction; **PAINTER:** RBL Limited; **RESENE PAINTS:** Wellington sales representative Dave Clarkson and architectural representative Mike James.

◀ *Far left: Pak'n Save Kilbirnie.*

◀ *Left: Close-up of facia texture.*



▲ Wrightson's AgriCentre on Deans Avenue in Christchurch.



▲ 'Kids Own Playground' - built by the community for the community.

relied on by resene

Wrightson's re-imagining programme included the re-branding of its 138 agri-business properties which reaffirms its long term commitment to New Zealand agriculture. A full size white lion on a crisp green background and navy blue fascias is the new corporate look for Wrightson. For peace of mind, Resene Paints specially manufactured the colours for Wrightson to meet the client's durability requirements and to regulate the colour formulations for Wrightson through Resene Paints' nationwide ColorShop network.

Paint specifications were designed for Wrightson properties including 77 AgriCentres, Wool and Seed Centres, Livestock, Sale-yards and general purpose buildings.

OWNER: Wrightson Limited; **PROJECT MANAGER:** Carson Group; **SIGNAGE CONTRACTOR:** Corada NZ; **RESENE PAINTS:** Wellington sales representative Dave Clarkson.

resene helps community asset

It took enough wood to build six houses, 15 truckloads (450 cubic metres) of wood fibre, 60,000 screws and 600 litres of sponsored Resene paints to complete the new 'Kids Own Playground' at Queen Elizabeth Park in Masterton. Around 2,300 volunteers gave their time and effort to build and paint the playground in just under one week.

Resene Timberlock was used to protect the treated dry Radiata Pine against splitting and water, fungal and UV deterioration. Brightly coloured murals along the walkways have been painted in Resene Lumbersider in a broad range of colours to finish the job.

ARCHITECT: Robert Leathers Associates (USA); **PROJECT CO-ORDINATOR:** Allan Williamson; **RESENE PAINTS:** Masterton sales representative Helen Nightingale.



▲ Ebor Street Apartments capturing the Mediterranean look.

Every so often a new product captures our imagination and we wonder why nobody thought of it before. Resene Paints has blended the strong design elements of a Mediterranean plaster with the superior elastomeric properties of Resene Flexicover E and created **Resene Plastercote**.

Resene Plastercote can be applied to concrete, leaking block work, Gib board, fibrous and solid plaster, old or powdery cementitious surfaces and steel. The success of this coating is that it not only provides the freedom to achieve a diverse range of finishes, it also protects against structures which will flex and develop minor cracks. Resene Plastercote can be applied to reproduce a sponge plaster finish associated with Mediterranean architecture through to a scratch plaster finish (worm tracks) depending on its application technique, aggregate size and spreading rate.

The Ebor Street Apartments in Wellington is the first building in New Zealand to feature Resene Plastercote in a specially mixed colour.



Sponge plaster finish.



Scratch plaster finish.

A levelling coat of Resene Plastercote Base has been applied to the exterior concrete block followed by a topcoat of Plastercote applied with a hopper gun and finished with a 12 inch wooden trowel to create a subtle Mediterranean effect. A two-coat application of Resene Plastercote was applied to the Harditex highlighting the extensive exterior detailing.

ARCHITECT: Glen Hooker Architects; **BUILDER:** Phoenix Construction; **PAINTER:** John Hendersons; **RESENE PAINTS:** Wellington sales representative Ben Freaan and architectural representative Mike James.



Summertime Blues

Those of you who read the 'Warm Fronts and Wet Edges' in the '99 summer edition of Resene News, will be aware of the profound influence weather conditions have on paint application and the subsequent performance of acrylic latex paints. With the roof painting season upon us, we are faced with the toughest of conditions. Dark coloured roofs under the summer sun can easily reach 60 degrees Celsius and higher.

Under these conditions, paint can almost 'flash-dry', leaving no time for the paint to flow out nicely; clogging the brush and not giving the film time to organise itself into the toughest, most durable configuration.

Optimum conditions for roof painting are an overcast day, no or little wind, 20 degrees Celsius with relative humidity of about 80 percent.

At the least, you should work on the shady sides of a building whenever possible. Use a good dollop of Hot Weather Thinner and most importantly, do not work in the hottest part of the day. Make like the Italians and have a siesta.