

## Relocation and Expansion marks Resene Paints' 40th anniversary

In its 40th year of operation, Resene Paints Ltd is on the move. New premises in Naenae have been secured and over the next few months the entire Seaview complex will be relocated. The move is a major one. This relocation comes on the eve of Resene Paints' 40th anniversary and represents another milestone for this unique New Zealand owned and operated company.



*Resene Paints' Managing Director Tony Nightingale discusses the plans to face-lift sections of the Philips factory through the all important addition of colour with design partner, Tim Bright of BNA Design.*



*An aerial view of the Naenae complex, showing the full extent of the new plant.*



The new warehouse area will have the capacity to hold much increased volumes of Resene Paints' products.

continued...

The Naenae factory complex was purpose built by Philips and for over 30 years was the main focal point for their manufacturing operation until its closure a few years ago.

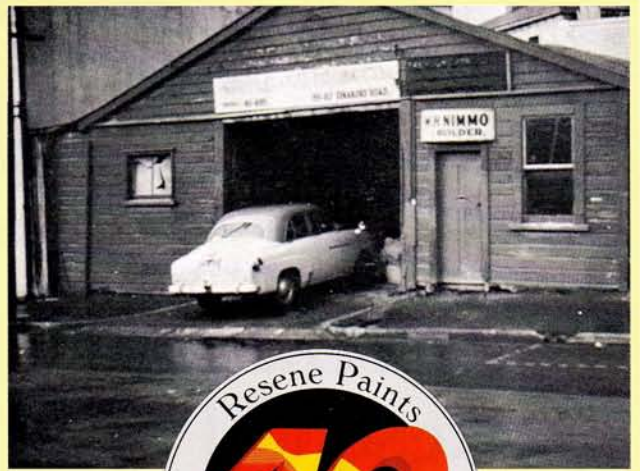
The new property covers 1.7 hectares and more than 6967 sq metres of factory space. According to Managing Director Tony Nightingale, the factory is ideally located and the layout with minor modifications, will be ideal for increased manufacturing capacity and warehousing greater amounts of product to meet the growing demands of Resene's fifty distribution outlets.

This move is the fourth location shift for Resene Paints whose beginnings can be traced back to a garage in Eastbourne, when in 1949 Ted Nightingale (father of present Managing Director, Tony Nightingale) began production of Stipplecote, a cement based paint still manufactured today.

The new premises at Naenae will facilitate Resene Paints next 40 years of innovation and growth.



**The paint the professionals use**



Resene Paints' first factory, an old stable in Tinakori Road, circa 1949.



## 40 years on

- 1949 - Ted Nightingale develops and manufactures Stipplecote, a cement based paint in an Eastbourne garage.
- 1949 - First factory established in Wellington's Tinakori Road in what was previously an old stable.
- 1952 - Stipplecote Products Ltd company registered. Expansion led to new factory in Kaiwharawhara. Resene Paints name established.
- 1952-1955 - First in NZ to introduce waterborne paints marketed under the Resene brand name.
- 1962 - Resene Paints moves to Gough Street, Seaview. Sales double since 1961.
- 1965 - Resene Paints (Fiji) established.
- 1970 - Own sales force established.
- 1972 - Tony Nightingale became Managing Director. BSS 2660 range launched.
- 1975 - Resene's first Color Shop set up in Marion Street, Wellington. Later that year shops opened in Auckland, two in the Hawkes Bay, Dunedin, Hamilton and Christchurch. Introduction of Test Pots.
- 1976 - BSS 5252 Range launched.
- 1977 - Changed name from Stipplecote Products to Resene Paints Limited. Protective coatings technology purchased from Giant Products.
- 1978-1992 - Thirty Color Shops open nation wide.
- 1985 - Total Colour Multifinish system launched.
- 1989 - Purchase Industrial Coatings Technology from the Ameron Corporation.
- 1990 - Upper Hutt Factory purchased. Resene Paints Australia Ltd established.
- 1991 - First year of sponsorship of NZIA national awards.