

Resene news

2/20



The B:Hive concept was conceived by Smales Farm as the first step in the transformation of a twentieth-century office park to a twenty-first century engaged urban hub. This is a new model of office building – it is actually the antithesis of ‘office building’ in that its genesis is to be a ‘place’ for flexible, collaborative and community engaged work attracting start-ups, small companies and individuals. There are currently 100 individual companies in B:Hive.

The five-level building engages at ground level with Goodside - a vibrant hospitality precinct designed by Izzard, which seamlessly merges into the ground floor of B:Hive and creates an energetic flow from the public realm to the interior of the building. The ground floor is designed as a hosted events space with a large meeting forum and a range of meeting rooms available for both the Farm and the community.

The atrium is the element that enables a new work community to thrive. The connecting stair is located close to the entry encouraging people to walk through the building rather than take the lift, which is located to the edge, providing opportunities to engage, meet, observe and participate.

The floors are designed for complete flexibility with relocatable walls located around the perimeter, creating suites enabling collaborative space around the atrium for overflow and individual subscribers.

Wellness is a primary consideration of new work and mixed mode ventilation by using façade thermal chimneys to draw air through the atrium, while a large clear skylight over the atrium enables direct sunlight to penetrate deep into the building and the stairs provide easy walking and energising throughout the day.

The primary colour dialogue in the B:Hive is an industrial neutral with the bright punctuation of the spiral staircase, the contrast between the prosaic industrial shed and the fluid and organic ‘humanity’ of the atrium and staircase. The orange was chosen because of the universality of orange as a colour of energy, which is the driver of the innovation of the work culture of B:Hive. Innovation, ingenuity and energy are embodied

"The primary colour dialogue in the B:Hive is an industrial neutral with the bright punctuation of the spiral staircase..."

in the shape of the stair instantly making it the memorable ‘icon’ of B:Hive.

The building acts as an integrated system by the high-performance façade with natural ventilation stacks that interact with the atrium shape to provide optimum indoor air quality. Natural ventilation creates fresh air rates six times higher than required by building code. Computer modelling showed that the irregular layers of the organic shaped atrium provide better air distribution than a rectangular or square atrium. Ventilation chimneys also provide mechanical assistance for greater air distribution. An airlock on the ground floor separates the retail spaces and hospitality and business/food court from the office and enables the chimneys to work as intended. The external façade mesh controls glare without using internal blinds and preserves views. A warm roof system addresses both thermal bridges and airtightness.

Resene paints were used on the project from intumescent and exterior protective coatings, to interior wall and ceiling linings. The two primary elements in the colour regime are the atrium stair in a custom-matched bright orange, and the primary steel structure in **Resene Red Oxide** (colonial red).



These elements are readable from almost any location throughout the building. Colour matching the feature stair facing colour to the rubber treads and wall linings achieves a homogenous appearance supporting the staircase’s sinuous sculptural form that gives the impression the stair is carved from a solid material.

Resene’s technical expertise was key to achieving the exact colour match desired. The primary steel colour is an update inspired by the classic steelwork primer colour.

The building’s remaining colour palette is relatively austere in order to play a supporting role to the dynamic spaces, vibrancy of large scale artworks and furnishings within. Strong bands of **Resene Sea Fog** (greyed white) delineate the varying atrium floor edge at each level of the generous central space. **Resene Nero** (blue black) picks up black accents throughout.

This project won the **Resene Total Colour Commercial Interior Shared Space Award**. The judges said *"drenched in colour, this central staircase feels like something out of Jack and the Beanstalk invoking curiosity and a desire to venture up to see what awaits. The bold colour highlights the curvaceous shape of the stairs as they twist and turn skyward and plays off against the neutral surrounds. Forget taking the lift when there are colourful stairs like these to enjoy."*

Architectural specifier: BVN www.bvn.com.au
in association with Jasmox www.jasmox.com
Building contractor: Leighs Construction www.leighsconstruction.co.nz
Civil engineer: Harrison Grierson www.harrisingrierson.com
Client: Smales Farm Corporate Services Limited www.smalesfarm.com.nz
Façade engineer: Lautrec www.lautrec.co.nz
Mechanical engineer: eCubed www.e3bw.co.nz
Photographer: John Gollings www.gollings.com.au
Project manager: Xigo www.xigo.co.nz
Quality surveyor: White Associates www.whiteassociates.co.nz
Service engineer: WSP www.wsp.com
Structural engineer: BGT Structures www.bgt.co.nz



rainbow recovery

Good Hands Physio had recently acquired a space inside what was the Browns Bay RSA Building, which was undergoing refurbishment to become a new medical centre. The task was to create a physiotherapy and Wellness Recovery Clinic, a space that needed to be much more than just some cubicles and a hallway.

The place needed to accommodate several medium-sized consultation rooms that could comfortably house various pieces of equipment along with a rehabilitation gym.

Due to the nature of the business, accessibility was an important consideration. With this in mind the gym and rehabilitation area is located at the centre of the clinic, making it accessible and visible to both staff and clients.

"By strategically using timber and a range of bright Resene colours, vibrancy has been injected into the space..."

Aesthetically, the aim was to differentiate the clinic from the dull white and beige so often featured in medical practices. By strategically using timber and a range of bright Resene

colours, vibrancy has been injected into the space, making it feel warm and comforting.

Colour has a powerful impact on the clinic's atmosphere and much thought went into how this could transpire to a patient's attitude and encourage recovery, breaking the mould of a typical hospital or treatment centre. American Oak sarking and polished concrete floors provided a perfect natural backdrop to make these feature colours pop.

A carefully selected palette of Resene colours has helped to transform the area into a much more relaxed and warming environment. Each consultation room has the main body of the walls painted in **Resene Black White** (grey white). The feature colours are then introduced on the back wall and extend to the side walls and ceilings.

Each room has a different colour and therefore a different experience and feeling. The feature colours include **Resene Boogie Wonderland** (bright violet), **Resene Wild Thing** (bright yellow gold), **Resene Limerick** (Irish green) and **Resene Red Hot** (primary red) in the physio rooms, **Resene Wot Eva** (hip blue) in the x-ray room, **Resene Drop Dead Gorgeous** (bold pink) in the massage room, **Resene Hyperactive** (frenetic orange) in the gym, **Resene Supernova** (bold yellow) in the ultrasound room and **Resene Transmission** (grey neutral) in the staff room. The reception area is Resene Black White. All walls were painted in **Resene SpaceCote Low Sheen**.

High-level glazing between consultation rooms allows colour and light to be borrowed by the adjoining rooms. The glass frosted doors offer a



glimpse into the colourful rooms when walking down the hallway, this allows the rooms to not only be identified by number but also by colour.

The only windows were at the front of the building, therefore natural light was limited. A new large skylight over the hallway now allows sunlight to stream through the main corridor during the day, further identifying that natural light and sun are also important features in the recovery process.

Natural American Oak sarking was used to provide a warm and relaxed feeling in the clinic, protected with a clear finish from Resene.

This project won the **Resene Total Colour Commercial Interior Public + Retail Colour Maestro Award**. The judges said *"active and energising, this colour palette makes you want to get up and get moving; it's the perfect palette for a physio. Bursts of bold and energetic colour play off the neutral backdrop. Instead of every wall being painted in full, the colour meets the neutral part way, emphasising the boldness of the contrast as they meet without overwhelming each space. A clever use of colour energy."*

Architectural specifier: Michael Cooper Architects
www.mcooperarchitects.co.nz

Building contractor: Colabb Building Ltd

Client: In Good Hands Physio www.ingoodhands.net.nz

Painting contractor: Andy Holman Painting

Photographer: Mark Scowen www.intense.co.nz





This project was the final product of a year-long thesis study focusing on redesigning bus shelters, inspired by Forrest Gump's quote "Life is like a box of chocolates, you never know what you're gonna get." This metaphor talks to the surprises that arise in life and the design process aimed to recreate a figurative 'opening of a box of chocolates' throughout Auckland's city centre. The recipe: small pops of fun in Auckland City with a splash of rainbow and a spoonful of character.

Throughout the design process of the thesis, a small 1:50 scale model was created every day with a different theme to introduce different characters to Auckland's metropolis. The aim was to redefine bus shelters to become playful rest spaces for the public.

The 1:50 scale model of the Go Bananas shelter sparked the most joy among peers and online so it was redeveloped for the final project at 1:1 scale. The concept was to combine art with architecture to redefine the use of the space within a bus shelter and exhibit the possibilities within this small space. An important aspect of the project was to promote kindness and joy among people in the city - particularly among strangers - by providing a platform for simple kind actions to take place, just as Forrest shared chocolates with strangers.

Colour was a key tool that was used to bring character to the shelter. As the theme of this project stemmed from bananas the choice of yellow was really important. The chosen yellow had to make a statement, evoke happiness, be bright and bold without being 'too much' to look at, and it had to complement the form of the structure. After many swatches, **Resene Lumbersider** in **Resene Half Turbo** (sunshine yellow) was chosen as the perfect yellow for the banana fins. The neutral base was painted in **Resene Black** (lamp black) and **Resene Quarter Rice Cake** (greened neutral).

The seating for the shelter was painted Resene Lumbersider in **Resene Sail** (clear blue) as it complemented the yellow and the colour provided a calming atmosphere for strangers to sit with each other.

In the design process, an important precedent that influenced the colour choice and overall aesthetic was the Memphis Movement. The Memphis Movement is the epitome of how objects, colours

"Colour was a key tool that was used to bring character to the shelter."



and patterns can not only shape a space but bring a space to life. Each face of the tetris blocks was painted a different colour to create a sense of play and capture the public's attention. The tetris blocks were painted in Resene Lumbersider in **Resene Unicorn** (soft violet), **Resene California** (bold orange), Resene Half Turbo and Resene Sail with a white primer base to protect the blocks from water damage.

The combination of the colours chosen was exciting and simultaneously welcoming for strangers to gather in the space.

With sponsorship from Klein Architects, support from Scarbro Construction with assembly, CNC services from Unique Creative, and funding from Heart of the City, the final shelter was exhibited at two public events; Artweek Auckland and World Park(ing) Day.

Initially, the form of the Go Bananas shelter was going to be rectangular because prior to receiving additional support and sponsorship for this project, the shelter was going to be assembled solely by the designer. But thanks to additional support, bananas became an all-encompassing influence on the form.

Bus shelters are a common structure that the public encounter everyday while walking through the streets. The current bus shelters simply exist and do not evoke excitement on street level. Bold colours were key ingredients used to create this exciting structure inviting the public in.

The shelter was designed to be easily assembled and disassembled by being flat packable. Scarbro Construction offered their services and were able to quickly construct the shelter for each exhibit.

This project won the **Resene Total Colour Bright Spot Award**. The judges said "combining a delightful sense of humour with striking colour, this bright spot invites you to come closer to find out more. It's quirky and fun, a delight to all ages. Who wouldn't want to feel like what standing inside a banana would be like? In the age of digital, this project takes talkability to the street encouraging shareable moments. The perfect way to share colour."

CNC services and consultant: Unique Creative www.uniquecreative.co.nz
 Designer and colour selection: Sharon Shin www.itssharonshin.com
 Photographer: Edward Duncan and Sharon Shin
 Sponsor: Klein Architects www.klein.co.nz
 Heart of the City www.heartofthecity.co.nz
 Sponsor and construction: Scarbro Construction www.scarbro.co.nz



every day is a *play day*

Isthmus has been working in partnership with Porirua City Council since 2014 to revitalise the city centre's public realm to become an attractive, inviting and successful urban centre. Te Manawa Playspace brings fresh energy and identity as a key component of this wider revitalisation project.

Porirua city centre's new name, Te Manawa, was gifted by Ngati Toa Rangatira to reflect its transformation. Te Manawa is a central place where many people gather, where their hearts beat as one. And at the heart of the heart, children have been given pride of place with a new bespoke destination playground.

The theme of the playground is Te Awa o Porirua (the Porirua Harbour), linking and reminding the town centre of its proximity to this vital water body. A series of small play spaces reference the tidal pools that form in the harbour. These small spaces are connected by a feature pathway and undulating granite walls and timber seat elements, which offer opportunities for balancing, stepping, jumping and clambering.

A bespoke canopy draws inspiration from the form of a whai (stingray); whai are a kaitiaki of local iwi. The whai glides above play areas casting dappled shade.

The colour palette for the play equipment follows the vibrant Pacifica colour theme developed for the adjoining CBD Revitalisation Project (the red, orange and yellow of **Resene Bullseye** (cherry red), **Resene Adrenalin** (fluoro orange) and **Resene Buttercup** (bold yellow orange) respectively). This ensures a visual cohesiveness throughout the city centre. This colour palette used throughout the wider city centre has been complemented with additional bright colours – greens and blues – which reference the ocean and history of the site (the former harbour's edge). This includes **Resene Left Field** (emerald green) and **Resene Limerick** (Irish green) for the 'reeds' throughout the play space and **Resene Windfall** (bold blue green) for a feature panel of the whai (stingray) canopy. The frame of the whai was painted with metallic **Resene Blast Grey 3** (silver grey metallic), which gives it a special shimmer and presence. This references the glistening water of the harbour.

The colour of the play space surfacing also references the harbour's edge with grass and sand tones along the ground plane.

The play space is in close proximity to the harbour and receives sun for a large part of the day so the finishes needed to be durable. Resene Armourcote 220 with Resene Uracryl 402 or Resene Uracryl 403 topcoats provide optimum protection.

The new play space has been a hit with the community. As soon as the construction fences came down children swarmed onto the brightly coloured new play features. What was once a shady dark corner that attracted anti-social behaviour is now a vibrant part of the new high-quality urban context of the city. The Porirua City Council is justifiably proud.

This project won the **Resene Total Colour Landscape Colour Maestro Award**. The judges said *"the seashore has come to ashore with over-scaled shells inviting young and old to play. The organic forms are welcoming, celebrated in colour, but not with the predictable seaside colours you might expect. Irresistible orange and yellow seashells are beacons to children. This palette is lively, fun and bursting with personality. Who wouldn't want to play in a park like this?"*

Architectural specifier: Isthmus www.isthmus.co.nz
Building contractor: Downer Group www.downergroup.com
Client: Porirua City Council www.poriruacity.govt.nz
Painting contractor - stingray canopy and seats: Ducare www.ducare.co.nz
Painting contractor - bins and drinking fountains: Urban Effects www.urbaneffects.co.nz
Painting contractor - light poles and swings: Seaview Blasting www.seaviewblasting.co.nz
Photographer: David St George www.dstgeorge.com, Downer Group
Sculptural playground artist: Philipp Meier www.philippmeier.net

"The colour palette for the play equipment follows the vibrant Pacifica colour theme developed for the adjoining CBD Revitalisation Project..."

The play experience draws on the character of the harbour and the foreshore themes that children identified with the most during the consultation process. The bespoke sculptural shells and play elements include tuangi, pipi, pupu, reeds and other sea life. This reflects the activities that took place on the harbour's edge before the area was reclaimed and acknowledges the importance of kai moana as a food source to Ngati Toa. The sculptural shells were developed with artist Philipp Meier who modelled, prototyped and manufactured them in his Hawke's Bay studio.

The vibrant Pacifica and harbour-themed colour palette is anchored by a neutral colour palette of various grey and brown tones and textures including **Resene Quill Grey** (soft grey) and **Resene Foundry** (shadowy charcoal) on the drinking fountains and light posts, which were used on various items of street furniture, and proprietary play equipment, to make them visually recessive. Resene Quill Grey was used on the swing set to ensure it remained cool to the touch in full sun. Even the litter bins were considered as part of the palette, painted in Resene Adrenalin and Resene Foundry.



"The clients wanted a great injection of colour, to create a truly unique interior and to avoid plain white walls as much as possible."

This project is a renovation of an old hill station originally built in 1890 left unrenovated for the last 15 years.

The new owners are a young family of five relocating from Melbourne. They wanted to transform the property into a beautiful, contemporary family home, reflective of their personality and lifestyle. It was important to have a balance of beautiful areas for entertaining as well as a practical and liveable place to raise three children.

The existing interiors were very dark with a lot of timber so the number one priority was to lighten up the spaces. The clients wanted a great injection of colour, to create a truly unique interior and to avoid plain white walls as much as possible.

Vibrant Resene colours were used to bring the house to life, in conjunction with a completely new soft furnishing scheme using layers of coloured, patterned and textured fabrics and new flooring to complete the customised scheme. Every single surface in the property was refinished, all floors, walls, ceiling and inbuilt cabinetry; the house had a total transformation.

When selecting colours, consideration was always given to the expansive gardens that could be seen through the windows and how these colours and light would affect the room. It was also carefully planned how the paint colours would relate to each other when looking from one room to the next.

It was decided to keep the entrance and sitting room more neutral, to be a calming space within the house and balance out the energy and colour of the other rooms. Combining the two tones of **Resene Double Parchment** (tawny taupe) and **Resene Bianca** (cream off-white) creates a sophisticated look that complements the artwork, textiles and Irish Georgian furniture in the space. The Bianca colour family is continued into the bedrooms in a

lighter strength **Resene Half Bianca** (fleecy off-white) on the ceilings.

The sitting room needed to be a more sophisticated space, keeping the walls fairly neutral without using white. **Resene Double Parchment** was perfect to bring warmth to the room working beautifully with the soft blues and greens of the fabrics.

With three girls, pink was chosen for the children's bedrooms. **Resene Cosmos** (pink orange) was selected because of its beautiful orange base, rather than purple. This soft colour is beautiful under lamp light and perfectly complementary to the pink toile textile used as curtains, bed heads and drapes for the 4-post beds.

The colour selection in the master bedroom was to emulate the beautiful colours of nature seen through the large windows. The sky was brought inside with the use of **Resene Malibu** (surf blue), which pairs perfectly with the existing green and white bedhead. Layers of green textiles add depth to the space along with a series of green fauna and flora sketches. The library continues the blue theme with **Resene Nauti** (chalky pastel blue).

This job was completed in an extremely short timeframe with just seven weeks from having access to the house to when the clients moved in. In order to meet this deadline two painting companies shared the project, one for upstairs and one for downstairs.

When the furniture was installed in the master bedroom, the bedside tables, pineapple lamp and shade all in white was too much. Using the Resene paints on hand a custom mixed green was created on the spot to paint the pineapple bases to break up the white and tie the room together.

In the guest bedroom, the original colour selected was **Resene Feijoa** (fresh green) but proved to be too strong. It was repainted in **Resene Cooled**

Green (light green) on walls and ceiling for a more calming and reflective feel.

Resene SpaceCote Flat was used on all walls and ceilings throughout the home. The use of so much colour meant the walls had a big enough impact in a flat finish and did not need a higher sheen to make them pop.

This project won the **Resene Total Colour Residential Interior Award**. The judges said *"feel relaxation wash over you as you view these living areas so tastefully decorated in soothing colours, a welcome respite from busy life. A changing symphony of colour against a very richly decorated and accessorised house, bolder choices add personality to key spaces. Colour flows seamlessly from wall to floor, ceiling to accessories, a match made in colour heaven."*

Interior designer: Coote&Co www.cooteandco.com.au
 Painting contractor: The Lady Painters, Gray's Painting and Maintenance
 Photographer: Lisa Cohen www.lisacohenphotography.com





the pink one

Building 6 is a two-storey building located at MOTAT's Great North Road site. It was originally constructed in 1972 as the 'Exhibition Hall' with a viewing mezzanine, four turrets (one with a periscope) and an adjacent tram workshop. The canopy lean-to located to the east of the building is a later addition, currently providing shelter for two trams. The building is a steel framed structure with concrete columns, clad and roofed in profiled sheeting.

The refurbishment works to Building 6 at MOTAT were undertaken to provide an environmentally controlled exhibition space for an international travelling exhibition.

Resene Irresistible (desire red) was selected for the exterior on Building 6, now affectionately known as 'The Pink one'. The selection and rationale of colours for Building 6 were a product of working with the existing – in the case of the exterior, Resene Irresistible which covered every brick, downpipe and barge flashing of the building. **Resene Hero** (knocked back orange) was almost an immediate contender for the HVAC ducting.

For various reasons, the air handling unit was to be located externally on the ground floor. This proved to be a challenging exercise of locating the rather large 900 diameter ducting on a large steel ladder adjacent to the building to get the ducts and fresh air snorkel up onto the roof. Cognisant of its size and its addition to the reading of the building's elevation, rather than hide it, it has been celebrated with colour; Resene Hero glows almost yellow in the sun and becomes more orange later on in the day.

Much of the interior of the exhibition space was already painted in **Resene SpaceCote Low Sheen** in a custom mixed Persian Night, a special order colour by MOTAT. It's not quite black, dark red or dark brown but somewhere between all of these. It's become the ideal 'black out' paint for exhibitions in this space, as it allows for a reading of the depth of the room when required and still feels warm.

The other colour selected was **Resene Baltic Sea** (dark charcoal). It's the topcoat for the

"Resene Irresistible was selected for the exterior on Building 6, now affectionately known as 'The Pink one'."



primary steel of the entrance canopy. This darkish grey, not yet blue was selected for its subservient and complementary relationship with the timber deck, which its columns perforate. The canopy's soffit was also painted Resene Hero, with the intention that the client will change the colour to complement each new exhibition in the space.

This project won the **Resene Total Colour Commercial Exterior Award**. The judges said "this building truly embraces its chosen palette, earning its new nickname as *The Pink One*. The

brave and bold colour palette pops out of its surroundings and is a striking contrast to the dark interior. Drawing attention, it has become the colourful heart of MOTAT and a popular meeting spot; you could never mistake this building for any other."

Architectural specifier: Athfield Architects Limited
www.athfieldarchitects.co.nz

Building contractor: C3 Construction www.c3construction.co.nz

Client: MOTAT – The Museum of Transport and Technology

www.motat.org.nz

Colour selection: Graham Cooper (MOTAT) and Athfield Architects Limited

Photographer: Mark Scowen www.intense.co.nz

brushstrokes

Resene
Total Colour
Awards 2020

win a colourful award

We're on the hunt for creative and colourful projects finished in Resene paints and colours in Australia, New Zealand and the Pacific Islands. Have you completed a project with creative and excellent use of Resene colours and paint? Then make sure you enter it into the Resene Total Colour Awards 2020.

Categories include: Residential - Interior, Residential - Exterior, Commercial - Exterior, Commercial - Interior Public/Retail, Commercial - Interior Office, Landscape, Education, Installation-Experiential-Product, Neutrals, Heritage, Rising star - Student, Lifetime achievement. Commercial includes commercial, corporate rebranding, industrial, government sector.

It's free to enter. And to make it easy you can email your images and information, dropbox them to us or send them in on a flashdrive if you prefer - whichever suits you.

There is over **\$15,000** in prizes to be won. We showcase a wide range of entries each year on the Resene website in the Resene Total Colour Awards gallery and include many projects in Resene media throughout the year. For the colourful winners, each category winner will win NZ\$1,000 and a coveted Resene Total Colour Award sculpture and the overall Nightingale winner will win NZ\$2,500 and an exclusive Resene Total Colour - Nightingale Award sculpture.

Get your entry form at www.resene.com/colourawards or email colourawards@resene.co.nz and we'll email you one. You can enter multiple times but each entry must be on a separate entry form.

Enter now! Entries close 30 June 2020.



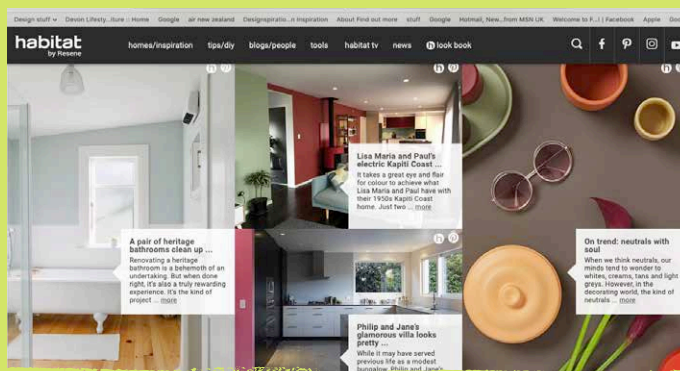
The 2019 Resene Total Colour Master Nightingale Award went to Waterfront House by Athfield Architects Limited.

nine times the charm



When Readers Digest announced its **Most Trusted Brands** survey results, Resene was proud to be named Most Trusted Paint for the ninth year running and third Most Trusted Brand overall. Thank you for your ongoing support – we really appreciate it. We always welcome constructive and helpful feedback that helps us improve - simply email us at update@resene.co.nz or fill out the contact form on our website.

in the know



habitat has long been a source of new decorating and colour ideas, since it started over 16 years ago. We have seen many projects directly inspired by *habitat* magazine, encouraging homeowners to step outside their comfort zone and embrace new ideas for their home.

We also have a whole host of ideas, inspiration and information to share with industry professionals. *habitat* is extending its coverage to become a source of inspiration to the design and construction community, with a new stream of inspiration, articles and expert commentary designed especially for specifiers.

If you're not part of the Resene database already, make sure you sign up free online at www.resene.com/specifierregister so you don't miss out.

You'll receive the new email newsletter complete with the latest inspiration, news and expert views, invitations and reminders for Resene webinars, resources, events and activities and a new publication to be released later this year.

fresh inspiration

The latest *habitat* magazine, issue 32 - is packed full of fresh ideas, trends and inspiration showing you how to use paint, colour and design ideas to transform spaces. It's coloured by Resene, but it's not just about painting. It's a handy way to get clients thinking about their project choices.



If you haven't received your copy of *habitat*, copies are available from Resene ColorShops and representatives or email update@resene.co.nz and we'll send you a free copy while stocks last. Remember to include your full name and postal address when you email. Back issues of Resene *habitat* and the *habitat plus* collection are available for viewing on the Resene website, www.resene.com/habitat.

HUNGER FOR COLOUR

cans for colour

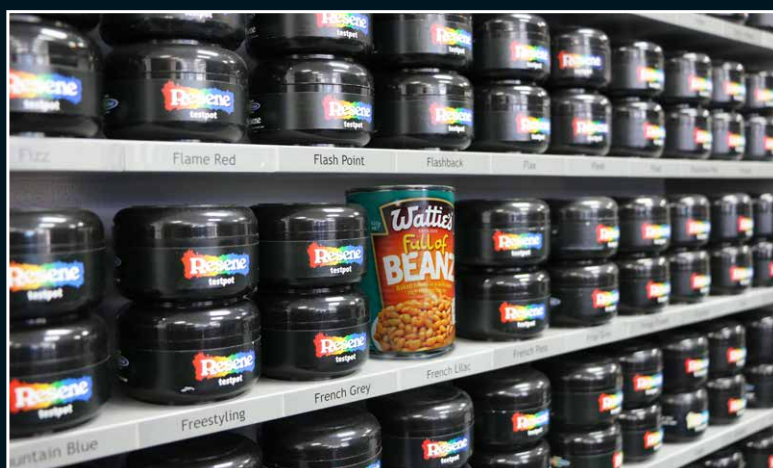


Te Ope Whakaora

Resene Hunger for Colour came back to help the Salvation Army restock its foodbanks. It was a simple swap – bring in a can of food and swap it for a Resene testpot of your favourite colour.

Over 43,000 cans of food were swapped for testpots during February, with over 230,000 cans of food swapped since Hunger for Colour began. The cans have once again given a timely boost to Salvation Army foodbanks, restocking shelves after a busy holiday and back-to-school period and helping prepare for winter when many families struggle.

We appreciate the support of this programme that brings colourful joy and inspiration to so many while also helping out those that need it the most.



the funny side of paint

"We wanted to change the look of our son's room but my wife didn't like wallpaper and I didn't like paint, so I started wallpapering. The next day I found out that my wife had painted over the wallpaper with the same colour."

Thanks to Rick!



be winter wise

With a chill in the air, many may think that painting isn't possible... but they would be wrong! With the Resene wintergrade range you can paint your way through most winter days.

The Resene Technical team first developed a small range of winterised products that will dry in temperatures down to 3°C, which have been used in winter conditions for over 10 years.

To enable an even wider range of products and colours to be winterised, Resene introduced Resene Wintergrade Additive last winter. Simply follow the instructions on pack and add to waterborne paints to help them cure in colder temperatures.



The Resene wintergrade range also includes ready to go premixed products - Resene Wintergrade Lumbersider waterborne low sheen, Resene Wintergrade Sonyx 101 waterborne semi-gloss and Resene Wintergrade Quick Dry waterborne primer undercoat. And if you're planning a large project, Resene also offers a made to order service, so if you need 200L or more of your chosen wintergrade finish, Resene can add the wintergrade additive and do the mixing for you.



Resene, Licensed products since 1996



the paint the professionals use



Incorrect mailing: If you are receiving multiple mailings or you would like us to change your mailing details, please call: In Australia phone 1800 738 383, in New Zealand phone 0800 RESENE (737 363) or email update@resene.co.nz.