

In New Zealand, PO Box 38242, Lower Hutt 5042
Call 0800 RESENE, visit www.resene.co.nz
or email advice@resene.co.nz

Resene
the paint the professionals use

In Australia, PO Box 785, Ashmore City, Queensland 4214
Call 1800 738 383, visit www.resene.com.au
or email advice@resene.com.au

in essence



The largest site on the sunny side of Arrowtown's protected historic Buckingham Street has seen a succession of hotels come and go since the first one built in the 1860s. The last in the chain, the Royal Oak Hotel built in the 1920s was weathered and battered finally resulting in demolition to make way for the new Royal Oak Project.

Close to the heart of the community, a long design and consent stage followed, including applying for a second consent after the first was approved due to a change in design plans. The original approved design was discarded in favour of a more sympathetic realisation as to context

and place, reflecting the desire of the community that the Arrowtown Town Centre should be developed in such a way that new buildings remain sympathetic to the historic nature of the town, but do not seek to replicate earlier eras.

Focusing on the architectural essence of Arrowtown and the elements of building scale, mass and form, the character of the new building was vested in being small, of human, pedestrian proportion and relevance; being substantially constructed of masonry and of solid shape or form; and being a conglomerate of visually formal techniques and relationships of façade and roof gable expression.

Over 2000 square metres of leaseable floor area is now enclosed in the Royal Oak Project in Arrowtown providing flexible and varied retail and commercial tenancy spaces distributed around a central open sunny courtyard area. Retailers are clustered on the ground floor with easy pedestrian access while the commercial and professional service providers call the first floor home.

The finished project has a five unit appearance, with parapets and an apparent size and proportion in context with the Goldfields era. The complicated roof design helps to provide a look in keeping with the era rather than using one large building structure.

Walls were built with natural, locally sourced, stacked schist stone complemented by traditional plaster render and Linea weatherboard cladding using traditional profiles and painted in approved heritage colours, using a cream, brown, red and grey colour palette in hues of Resene Pearl Lusta (classic cream), Resene Eighth Mondo (softly greyed brown), Resene Mondo (grey green neutral), Resene Double Arrowtown (earthy neutral), Resene Pavlova (green edged cream) and Resene Pioneer Red (colonial red oxide).

Building in a heritage area brings with it unusual challenges with colours and materials needing to be checked and passed by the Civic Corp and the Arrowtown advisory board. Their strict requirements saw Resene Vixen replaced with Resene Pioneer Red and standard BNZ corporate colours being changed on an external access ATM machine.

The Royal Oak Project in its finished glory has struck just the right chord, combining an appreciation of Arrowtown's history with the innovation of modern day architecture.

Architect: John Blair Architects
Construction: Rilean Construction Ltd
Owner: Arthur Anderson and Marie & David Speight

Project Manager: Peak Projects International Ltd
Resene: Annette Gin, Queenstown Branch Manager





ride on

Design and Built Contractor: Calder Stewart
 Painting Contractor: HG Morsink
 Resene: Hamish McLeod, Southland Trade Representative
 Track Designer: Ralph Schürmann (Germany)

The first indoor international standard cycling velodrome in New Zealand now resides at Surrey Park, Invercargill, housing a 250 metre wooden track forming part of the multi-million dollar extension to Stadium Southland.

The complete project took 56 weeks, with a crucial five weeks allocated to the painstaking work of building the track itself. The track is formed using 376 Nordic pine laminated trusses at 600mm centres, while the surface timber is Baltic pine 6 metres in length. Trusses were surveyed into place with the 250 metre inside board meticulously placed as this board officially forms the measurement of the track.

Securing the 185 laps of surface timber, each secret nailed into the previous inside layer and skew nailed into each truss at a rate of five nails per metre, was an exacting task requiring 2000 nails per lap (360,000 nails in total) to be hand-nailed by a team of 15 carpenters under the instruction of track designer Ralph Schürmann

from Germany. The outer balustrade was formed with 3000 pieces of tongue and groove.

The finishing touches were selected from the Resene range of products, with **Resene Armourchlor HBF** white used to protect steelwork and **Resene Lusta-Glo** semi-gloss enamel tinted to **Resene Silver Chalice** (pewter grey), **Resene Zylone Sheen** tinted to **Resene Crab Apple** (red terracotta), **Resene Athens Grey** (pearl grey), **Resene Mantle** (pastel green) and **Resene Killarney** (shamrock green) and **Resene Sonyx 101** semi-gloss acrylic tinted to **Resene Crab Apple** protecting all other areas in need of a lick of paint and a touch of colour.

With a world class track at their doorstep, the continual whirr of bike tyres is testament to the dedication of the cyclists.



climbing high

Whether top rope, lead, high traverse or crack climbing is on your list of favourite rock climbing pursuits, the Flax Rock Adventure Centre in Swansea Road, Flaxmere will encourage you to scale new heights. This newly opened centre features an impressive 13 metre high 880 square metre regional standard indoor rock climbing wall.

Recreating a sense of the great outdoor rock terrains indoors on a plain marine plywood substrate was achieved through an extensive palette of Resene colours and the artistry of John Roelants.

Resene Non-Skid Deck & Path in hues of **Resene Scorched Clay** (fiery red orange), **Resene Footloose** (yellow orange), **Resene Kowhai** (ochre yellow), **Resene Red Sienna** (earthy red) and **Resene Rangitoto Rock** (earthen brown) provide a comfortable grit texture joined by the fine texture of **Resene Sandtex** tinted to **Resene Sanguine Brown** (brown red), **Resene Cream Can** (mellow yellow) and **Resene Prairie Sand** (terracotta). The wall colourway is completed with a basecoat of **Resene Kenyan Copper**



Artist: John Roelants
 Resene: Helen Clayton-Greene,
 Hastings Trade Sales Representative

(rich brown red) and **Resene Tussock** (yellow oxide) tinted into **Resene Lumbersider** satin acrylic finished in **Resene Hero** (bright orange), **Resene Mai Tai** (gold amber), **Resene Prairie Sand**, **Resene Tia Maria** (red orange), **Resene Moroccan Spice** (bitter brown orange), **Resene Bright Spark** (bright yellow), **Resene Buttercup** (yellow orange), **Resene Corn** (sunshine yellow) and **Resene Cedar** (brown). Colours were painstakingly layered and arranged to recreate the detailed natural artwork of Mother Nature.

With climbers queuing up to tackle the wall, it is proving to be an extremely high wear and tear environment. Anticipating the importance of durability and keen to avoid a laborious repaint of the extensive rocklike artwork, the coloured topcoats have been protected in varying sheens of **Resene Multishield+ Gloss** and **Resene Multishield+ Flat**.

From ground to peak the wall is finished in Environmental Choice products, a fitting selection of products when recreating the joys of the outdoors in an all weather indoor facility. With the wall resplendent in artwork, the only way is up!

a thousand words



Architect: Jasmx
Building Contractor: Kerr Construction
Engineers (Architectural): Hawthorn & Geddes
Painting Contractor: McNabb Decorating Services
Resene: Stef Christodoulou, Northland Branch Manager



A picture is worth one thousand words, and a library full of pictures and words joined by cultural masterpieces is worth much more to the local community. The first civic building of this type to be built in the district in nearly three decades, the Whangarei Public Library set against a landscape of the Whangarei hills combines upmarket futuristic architectural design with community involvement.

Double the size of its predecessor, the new two storey library bridges out to the old with its large roof extending over the rear of the old library to form a shared porch roof, while providing a relaxing outlook to Cafler Park. The predominantly tilt slab exterior is joined by exterior steelwork finished in **Resene Uracryl 403**.

As a backdrop to the books, interior steelwork is finished in Environmental Choice approved **Resene Enamacryl** gloss waterborne enamel and general wall spaces in **Resene SpaceCote Low Sheen**, for a durable finish. Striking hues of **Resene Wasabi** (muted lime green), and **Resene Pohutukawa** (spicy rich red) provide contrast and interest against the more neutral tones of **Resene Bianca** (cream off-white), a palette that is a seamless fit with the cultural makeup of the community.

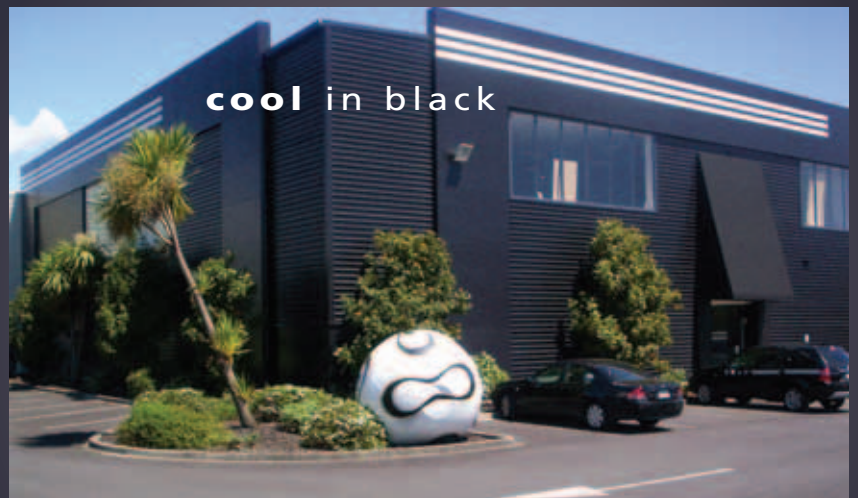
Developed under a fixed price contract, the completed project came in just under budget with community assistance providing for the totara poles, carving, lighting and installation and has recently been awarded a Creative New Zealand 'Built Environment' Award. When opened with a fanfare of cultural performances the Prime Minister acknowledged that with the multicultural pou, it represented much more than just a library for Whangarei.



Taking cues from its owner, Adolf Dassler, 'Adi' from Adolf and 'Das' from Dassler were joined together to create a new company – Adidas in 1949. A little known brand in the following years, Adidas was worn by famous high jumper Dick Fosbury and later the winning Germany team in the 1974 World Cup final and from there the company continued to expand at a rapid pace moving away from its manufacturing focus to a marketing focused company in the 1990s. 1996 saw 6000 Olympia athletes compete in Adidas clothing and sales bounded ahead by an additional 50%.

Today the three white stripes on black are instantly recognisable as Adidas, a sought after emblem commanding a premium on all forms of sportswear. Reflecting the striking nature of the brand on merchandise, Adidas applied the same single minded focus to its Mt Wellington Head Office in George Burke Drive. With a full exterior repaint and an interior refurbishment, the building is set for success. The exterior long run galvanised iron and previously painted concrete walls were coated with **Resene Sonyx 101 Cool Colour**, with a cool colour formulation specially developed to match their black corporate colour. The cool colour technology improves the heat reflectivity of the coating reducing stress on the coating and substrate and heat transference to the interior, keeping the building cooler and minimising air conditioning costs in the hot Auckland summer.

Just a hop, skip and jump from the motorway and dressed in striking black walls and vivid white stripes, the Adidas Head Office is the ideal billboard.



cool in black

grand lady



Whangaroa Harbour, once the largest shipbuilding yard in New Zealand, is now a base for big game fishing and the perfect location for Totara Country Lodge on The Cutting Road off Totara North Road. A comfortable drive from Auckland and with the lure of big fish reeling in the visitors, one wonders whether the fish are the catch or the humans.

For more than 100 years the historic Kauri homestead has faithfully served as home for one family before being sold and lovingly refurbished. Reflecting a deep respect for the history etched into every element of the home, the original pitsawn timber home has retained its character and detail while offering luxurious accommodation for today's comfort seeking clientele.

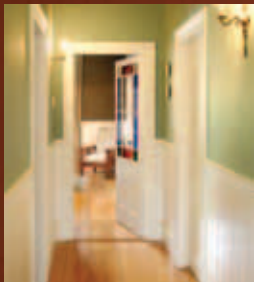
Bored of beige and off-white, the colour palette was selected to allow the house to glow with colour and reflect the earthiness of the property and the vitality of the sea. The predominantly white wood panelling

in the dining room is partnered with the depth and nurturing quality of **Resene Oilskin** (complex brown) tinted into **Resene SpaceCote Low Sheen**. With the lights dimmed and the fire blazing this room is a favourite among guests.

Resene Aphrodisiac (soft red) graces the bedrooms and wraps around the guests to provide a cosy ambience while they rest, accessorised with crisp white linen and woodwork. **Resene Bluegrass** (mid blue green) provides a bridge between the two colours adding light to the lengthy hallway.

Dark colour was avoided on the exterior due to the broad and low exterior shape and the desire to blend with nature rather than dominate it. Varying strengths of **Resene Parchment** (light beige neutral) feature, with full **Resene Parchment** on the roof, triple strength on the walls and quarter strength on trim and joinery to draw attention to the fine architectural detailing. **Resene Rambler** (whisky brown) on the verandah floor grounds the exterior walkways.

A home turned lodge steeped in history, this grand old lady is a painted beauty.



Architect: Michael Brewerton,
Accento Architecture
Designer and Proprietor: Beth Mackay
Painting Contractor: Tony King
Resene: Darren Knight,
Project Services Representative

times thirty



Artist: Tricia Osborne, Modern Masters

Creating one masterpiece is enough of a commission to keep most artists busy. Multiply that by thirty and you have the project that Modern Masters has just completed for a Melbourne hospital. The thirty pieces range from 14 pieces 900 x 1200mm to the largest piece, a triptych called 'Orchestrate', measuring a total of 1500 x 5000mm.

This piece was created with **Resene Nero** (inky blue black), **Resene Red Berry** (primary red), **Resene Monarch** (opulent red), **Resene Bright Red** (bright red), **Resene Dynamite** (blue red), **Resene Fire** (brick orange), **Resene Moroccan Spice** (brown orange), **Resene Eastern Blue** (sky blue), **Resene Atoll** (sea blue), **Resene Blumine** (deepwater blue), **Resene Cutty Sark** (blue green), **Resene Malibu** (surf blue), **Resene Edgewater** (summer green), **Resene Gimblet**

(ochre green), **Resene Barista** (moody brown) and white. The sheer size of the largest pieces necessitates the construction of a special canvas supported by top quality materials including plantation grown hoop pine for the stretcher bars and heavy weight imported polycotton canvas.

Copious amounts of **Resene Lumbersider** satin acrylic applied with house paintbrushes are used to colour each of the canvases, selected for the extensive colour range, ease of use and flexibility of the product. Texture is a prominent feature of the artwork, achieved by building up thick paint and also mixing paint with filler for an even thicker texture. Much of the work is completed using **Resene testpots**, with the most commonly used colours held in larger can sizes.

For maximum durability, all artworks are glazed with **Resene Multishield+** gloss. The Resene colour range saves time allowing a colour to be selected off the shelf, rather than spending time trying to mix that perfect colour, while also enabling the colour to be quickly and easily duplicated. Commonly a basic colour is selected then a couple lighter and a couple darker used to achieve a depth and variety of colour in the piece.

Larger than life art awaiting a blank wall - when you're looking for custom artwork tailored to your individual colour and size requirements, browse the gallery at www.modernmasters.com.au.



Airport Equipment: Duncan McLennan, Managing Director
Resene: John Kilby, Corrosion Consultant

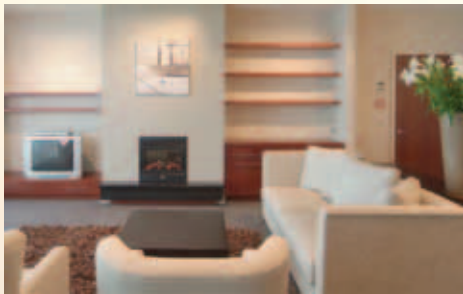
Commonly located by the seaside, airports are generally associated with harsh marine environments and complicated maintenance due to operational security issues and economics that demand air bridge structures remain in service to safely transport thousands of passengers day and night.

Airport Equipment Ltd and Resene started a collaborative working relationship a decade ago to develop a superior corrosion protection system for air bridges, comprising a low build duplex paint system incorporating all three methods of corrosion protection available - sacrificial, inhibitive and barrier. Using the three mode protection method seldom used at the time, thermal arc sprayed zinc metal was first applied at a film thickness of 100 microns followed by a 100 micron film of **Resene Armourcote 220** topcoated with **Resene Uracryl 404** low sheen urethane, developed to suppress reflection from lights at the airport to aid the pilot's vision when taxiing the aircraft to the bridge.

The duplex corrosion protection system demonstrates the cost benefits of innovative thinking resulting in a vastly superior predictive performance life with a system that meets essential operational reliability standards with reduced maintenance and replacement costs. The first air bridge using this innovative system was installed at Wellington Airport in October 1997 and 78 air bridges have since been coated and supplied within the Australasian region.

Nearly a decade on, the first air bridge coating system is performing with ease in the harsh conditions. In a world of intense international engineering competition, Airport Equipment's continuous innovative thinking has given them the competitive leading edge in supplying high quality air bridges to service the Australasian region and they have many world leading innovative credits to their name, including the new multi air bridge system to service the massive new 555 passenger A380 super jet. Larger in stature than normal air bridges to provide efficient and comfortable plane boarding and alighting, the multi air bridge spans 8.2 metres off the tarmac providing access to the upper deck.

So next time you're boarding a plane, spare a thought for the innovative air bridges that make air travel considerably easier than climbing an old fashion set of cabin stairs.



sunbather

Built on the waterfront overlooking beautiful Tasman Bay, the first stage of the three stage The Quay Apartments quality development, comprises eight large apartments.

Nelson is famous for its high sunshine hours. While a boon to sunlovers, the drenching of sunlight can create issues when selecting finishes. Due to the apartments' westerly orientation, the interior walls were subject to strong afternoon cross lighting, necessitating careful consideration of critical lighting issues for the interior specification. **Resene Broadwall 3 in 1** was selected and applied by spray to provide a smooth monolithic finish complementing the Level 5 construction beneath and enabling a superb Level 5 finish to be achieved. Quick to apply by spray, other subcontractors could quickly access the site and complete their part of the project.

Resene SpaceCote Low Sheen waterborne enamel on broadwall areas minimises surface reflection providing a seamless sheen throughout each interior joined by **Resene Lustacryl** semi-gloss waterborne enamel on trims and joinery in palettes of **Resene Quarter Drought** (dry beige), **Resene Half Drought** (dusty taupe) and **Resene Napa** (smoky grey beige) on the show apartment and similarly balanced palettes of **Resene Fossil** (beige), **Resene Sea Fog** (grey white) and **Resene Pearl Lusta** (classic cream) on neighbouring apartments. Careful attention to finishing and detailing, means the view on the inside of these apartments is as picture perfect as the view to the outside.



Architect: Richard Carver, Carver Architects
Building Contractor: Gibbons Construction
Painting Contractor: Pinnacle Painters
Resene: Philip Thompson, Nelson Marlborough Branch Manager



rough stuff

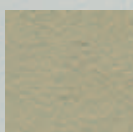
The Range annual fandeck and The Range Whites & Neutrals have proven such a popular and enduring format that Resene has fielded numerous requests for another version to provide a quick reference to the Resene textures and specialist finishes.

The new **The Range Textures & Specialist Effects** showcases a range of Resene and Rockcote finishes and includes everything from Resene metallics and Resene AquaShield through to textures such as Resene Plastercote and Resene Resitex. Similar finishes are presented in the same colour to simplify comparing the various textures and gloss levels without the distraction of a range of colours.

The Range Textures & Specialist Effects is backed up by a new section on the Resene website showing a range of samples, information, specification and project links to make selecting and specifying the right texture or specialist finish easy.

Check it out at www.resene.co.nz/comm/textures/index.htm or www.resene.com.au/comm/textures/index.htm.

Contact your local Resene representative or Resene ColorShop to view a copy of the new The Range Textures & Specialist Effects.



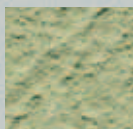
Resene AquaShield is a high mineral content, super hydrophobic, water repellent coating with excellent coverage. It combines the water repellent properties of silicones with a special surface micro-structure, which considerably reduces the contact area for water and dirt. The result - dirt particles adhere lightly and are more easily carried away by rain. See Data Sheet D601.



Resene Flexicover E is a thixotropic waterproofing membrane designed for thick application over cracked concrete surfaces. It is made using acrylic elastomers that have excellent 'memory' of their original shape when distorted, which gives the product incredible movement and crack bridging capabilities, enabling it to bridge gaps up to half the thickness of the paint film.



Resene Non-Skid Deck & Path is a textured waterborne finish, designed to provide a comfortable walking surface for all interior and exterior situations where a non-skid finish is desired. Available in a desirable low sheen finish, Resene Non-Skid Deck & Path may be tinted to complement existing décor, both inside and out. The finish has a comfortable grit texture to give feet and shoes something to grip onto, reducing the risk of accident no matter what the weather.



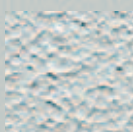
Resene Plastercote is an elastomeric waterborne specialist finish perfect for creating a Mediterranean style sponge finish yet tough enough to withstand harsh environments. Based on tough acrylic elastomers that have an excellent memory of their original shape when distorted, Resene Plastercote is capable of bridging minor cracks.



Resene Resitex is a tough waterborne textured spray finish with excellent adhesion and flexibility, available in three grades: **Resene Resitex Coarse**, 880 micron deeply textured rugged texture. **Resene Resitex Medium**, 500 micron heavy Mediterranean texture; **Resene Resitex Standard**, 300 micron light Mediterranean texture. These textures effectively disguise the imperfections and surface blemishes of the substrate without detracting from the architectural concept. Resene Resitex is used on concrete, blockwork, solid plaster and fibre cement sheeting.



Resene Sandtex is a tough waterborne textured spray finish for beautifying and protecting concrete structures. It has a fine texture of 150 microns and is often used to recreate the texture of natural sandstone. Inherently durable, it may also be used to create lightly textured effects. The fine texture is available in two grades - **standard** and **superfine** - so you can select the appropriate texture for your project.



Resene Thixalon 5 is a semi-gloss waterborne waterproofing membrane, with superior small void and crack filling properties, designed for thick application over concrete surfaces. Perfect on concrete, blockwork, fibre cement sheeting, solid plaster and on cracked substrates where waterproofing is required. Brushed into small cracks it will prevent moisture entering the damaged substrate.



Resene X-200 is a waterborne waterproofing membrane that is used either on its own or under Resene textures, such as Resene Resitex (see Data Sheet D70) or Resene Sandtex (see Data Sheet D71). It is perfect on concrete, blockwork, fibre cement sheeting and solid plaster where waterproofing is required.



If a finish a little out of the ordinary is called for, **Resene Metallics and Special Effects** are the ideal solution to add an extra dimension to a wide range of areas from exterior concrete and steelwork through to interior feature walls, doors, joinery and furniture. Resene has three metallic finishes: **Resene Imperite I.F. 503** is a spray applied high performance coating - more durable than Resene Enamacryl Metallic in exterior situations and ideal over new steelwork. **Resene Enamacryl Metallic** is a waterborne alternative to Resene Imperite I.F. 503 and is recommended over prepared concrete and plaster. Resene Enamacryl Metallic is the preferred product for interior work because of its Environmental Choice approval and low VOC. **Resene ArmourCat** is a range of acid catalysed pigmented, metallic and clear finishes designed for everything from desks, shelves and shop fittings to kitchen units, timber fixtures and furniture.



Resene Sun Defier is based on a unique waterborne emulsion for ease of application and maximum life over prepainted surfaces. It has been formulated with UV absorbers to filter out harmful UV light, protecting the coat beneath. It is ideally suited for direct application to freshly painted exterior bright organic tinted colours, such as reds, oranges, yellows and purples, to aid colour retention by protecting these more vulnerable colours against fading.



Resene Multishield+ is a waterborne clear glaze commonly applied over waterborne systems to increase their durability, extending the life of the system and helping to prevent chalking of the paint film. It is often used as a clear glaze over masonry bricks, stonework and fibre cement sheeting.

freely green

Resene Zylone Sheen rules the popularity stakes for its adaptable great quality interior finish. Environmental Choice approved and low odour since 1996, it has always been a popular choice for commercial and residential projects as well as those sensitive to environmental concerns.

Celebrating 10 years of Resene Zylone Sheen being an environmentally preferable finish, Resene chemists have developed a second version - **Resene Zylone Sheen VOC Free**. Resene Zylone Sheen VOC Free combines the popular features of Resene Zylone Sheen with no volatile organic compounds (VOCs).

Today just 8% of the decorative paint Resene sells is solventborne compared to 20% for other major paint companies, while the average per litre VOC levels of Resene decorative paint sales have dropped by over 90% in the last two decades. Innovations, such as Resene Enamacryl, Resene Lustacryl and Resene SpaceCote waterborne enamels, now mean that it is possible to select a **Resene Environmental Choice** approved waterborne product for most applications, where once only solventborne products were available.

For more information on Resene's commitment to minimising the effect of decorating on the environment, see the **Resene Make a sustainable choice** brochure.



right white



With the Resene top 20 colours list dominated by neutrals, the ever popular **Resene Whites & Neutrals** flat chart has enjoyed a tweak to ensure all top 20 colours are represented within a single chart available free to all customers, both retail and commercial. Featuring four strength variants of authentic **Resene Spanish White**, **Resene Tea** and **Resene Pearl Lusta** together with a mix of Resene's most popular colours, this chart is the ideal starting point for most projects. You can be sure that by passing a copy of this chart onto clients they have the best of the best Resene colour range to select from.

New Resene Whites and Neutrals flat charts will be available in stores as the old version runs out and copies will be available for ordering from www.resene.co.nz or www.resene.com.au from the colour charts ordering section.

The Range Whites & Neutrals already includes the top 20 colours as part of its extensive collection of 300 whites and neutrals.

For a copy of the Resene top 20 colour list, see your Resene ColorShop or Resene News Issue 4, 2006.



shoo fly



Musca domestica, the housefly, is a well known cosmopolitan pest responsible for transporting disease carrying organisms and damaging surfaces. When resting, adults regurgitate a liquid that results in spots on the surface combined with other darker spots, both of which can be difficult to remove without damaging the paint surface. The flies are inactive at night and tend to congregate on ceiling areas.

Resene has found a way to resolve the unwanted fly spot nuisance through a novel approach – that is, create a surface that flies **don't like landing on** and you'll minimise the appearance of fly spots.

This novel concept has been formulated into **Resene SpaceCote Flat Fly Deterrent**, designed to discourage flies from landing on areas painted with this product minimising the appearance of fly spots and keeping the paint finish looking its best for longer. Extensive testing by an accredited laboratory has shown significant reductions in fly spots compared to standard paint systems.

Resene SpaceCote Flat Fly Deterrent combines all the benefits and performance of **Resene SpaceCote Flat** with the added bonus of fly deterrent. If fly spots are getting on your client's or your nerves, do them a favour and use some **Resene SpaceCote Flat Fly Deterrent**.

Available exclusively from Resene in white and over 800 colours off white.

it's a promise



Resene has always stood behind the paint it makes. To formalise this, the **Resene promise of quality** document assures customers that they can expect the Resene paint they purchase to provide film adhesion and film integrity for the period stated on the expected paint system life chart – if it doesn't Resene will supply replacement paint to rectify the affected area.

The benefits of this promise are that it:

- Applies to a wide range of Resene products and substrates both inside and out.
- Recognises that projects can vary greatly so shows the range of expected paint system life periods that can be expected.
- Can be transferred to new owners provided they have the original proof of purchase.

If the paint film fails, Resene will supply replacement paint to rectify the affected area (upon presentation of the original proof of purchase). The amount of paint supplied will not be reduced in volume depending on the age of the paint job – i.e. if the paint job fails in year 1 or year 9 of an expected 12 year life, then Resene will still supply the same amount of paint to fix the affected area.

You can view a copy of the Resene Promise of Quality online at www.resene.co.nz/pdf/promise_of_quality.pdf or ask for a copy from your Resene representative or Resene ColorShop.

The **Resene X-200 10 year warranty** and specific 'Fitness for purpose' warranties are still available for larger projects. Ask your Resene representative for more information.



colour call



Resene SpaceCote Flat waterborne enamel was a popular addition to the Resene range last year, extending the range of waterborne enamels from **Resene Enamacryl** (gloss), to **Resene Lustacryl** (semi-gloss), to **Resene SpaceCote Low Sheen** and now to **Resene SpaceCote Flat**.

Initially available in white and off white colours, the Resene SpaceCote Flat standard version has been expanded to include Pastel, Light, Mid, Deep and Ultra Deep tone, enabling most Resene colours to be tinted into this desirably flat finish.

Resene SpaceCote Flat is ideal for interior work from walls and ceilings to wet areas. For a Level 5 finish, combine with **Resene Broadwall 3 in 1** (see Data Sheet D810) or **Resene Broadwall Surface Prep** (see Data Sheet D807).

For more technical information on Resene SpaceCote Flat see Data Sheet D814.

inspired

Swatches meet inspiration in the **Interior Design Collection** drawing on colour and texture influences from nature, architecture and design in a set of six colour schemes developed by Yellow Fox. The colour schemes incorporate Interior products Bestwood Melamine, Bestwood Natural Wood Veneer, Stonex and Varia with leading design products, including favourite colour swatches from Resene. Showcased in a magazine style publication matching colour schemes with inspiration sources, the collection offers a taste of the new Bestwood Melamine and Stonex colours and can be manipulated by specifiers to suit their interior projects. For your copy visit www.interior.co.nz or call 0800 570 500 (NZ).





paper plus

The Range 2007 includes a taste of wallpaper with a few tempting swatches showcased from the extensive range available.

The presentation of these swatches within The Range has prompted numerous requests for accessible samples of those wallpapers. Thanks to those requests Resene added the wallpapers that appear in The Range 2007 to its drawdown order service from late 2006.

If you wish to order an A4 sample of any of the wallpapers that appear in The Range 2007, order it direct from the Resene drawdowns service or contact your local Resene representative for assistance.



floored for choice

Durable yet decorative is the theme of the new Devofloor flooring range designed for commercial and industrial applications. The extensive new range includes a waterbased epoxy primer technology for application to green concrete without the need for blasting or grinding, epoxy and urethane non skid floors, concrete patch repair systems, flexible joint fillers and coloured quartz aggregate floors.

Committed to producing quality coatings, training staff and applicators, and continuing to support the industry with knowledgeable coatings experts working closely to support customers and staff, Altex and Devoe work closely to bring innovations to the local market.

The Devofloor range is ideal for areas such as commercial institutions, wet areas, laboratories, supermarkets, correctional facilities, clean rooms, laundries, food processing areas to name but a few. Applicators are spread throughout New Zealand and in Australia (QLD and NSW only).

See www.altexcoatings.co.nz
- Flooring for applicators in your area.

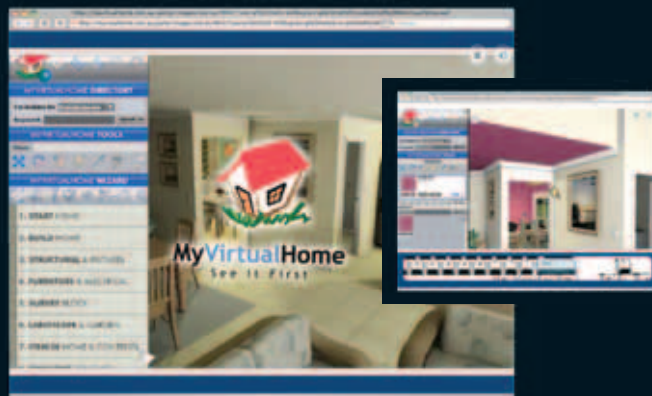


making a splash

A 3440 x 610mm splashback of Resene Barista (moody brown) selected for Kitchen Expo's design display has proved yet again that a brave choice can often be a popular one, with the finished splashback making a strong statement.

Part of an extensive Mt Roskill showroom of 33 kitchens and 7 bathrooms on permanent display complemented by Resene fashion paint colours, one can combine research of latest kitchen and bathroom trends with a quality coffee fix from award winning Roasted Addiqtion Abstract Café. If surfing the net sounds more like your cup of tea, cruise into www.kitchenexpo.com and let your mouse do the work.

virtually home



Resene has long recognised the power of seeing the finish before you start the painting, by introducing testpots over two decades ago and by the expanded Resene website and the Resene EzyPaint virtual painting software.

Resene EzyPaint is ideal when you want to try out different colour options – either select a gallery image and colour that or load, path and paint your own project. It's free to download from www.resene.co.nz/ezypaint/main.htm or borrow a CD from your local Resene ColorShop or representative.

If however customers want to design a home from scratch using 3D modelling, then MyVirtualHome may suit their needs. MyVirtualHome allows users to design and walk through a 3D visualisation of their perfect home on their computer. MyVirtualHome is in the process of uploading thousands of Resene colours into the program. Once complete users will be able to select from an extensive range of Resene colours.

For more information on MyVirtualHome and to download a copy, visit www.myvirtualhome.com.au.



committed

Specifying quality paint and colour isn't enough to ensure a quality finish – you also need quality application with quality tools, which is why Resene provides industry training. Resene industry training is designed to help trade painters improve their business while providing specific application recommendations for, and demonstrations of, Resene products. The result – more painters confident and informed about new paint systems, which leads to better finishes and happier clients.



If you wondered who took the stunning photos of the Nelson Museum last issue, the images were thanks to Grant Stirling of Stirling Images.

Our apologies for excluding this from the story credits last issue.



Incorrect Mailing If you are receiving multiple mailings or you would like us to change your mailing details, please call 0800 RESENE (NZ), email us at advice@resene.co.nz or fax 04-577-0664 (NZ) giving the current address where you are receiving mail and the change/s required.