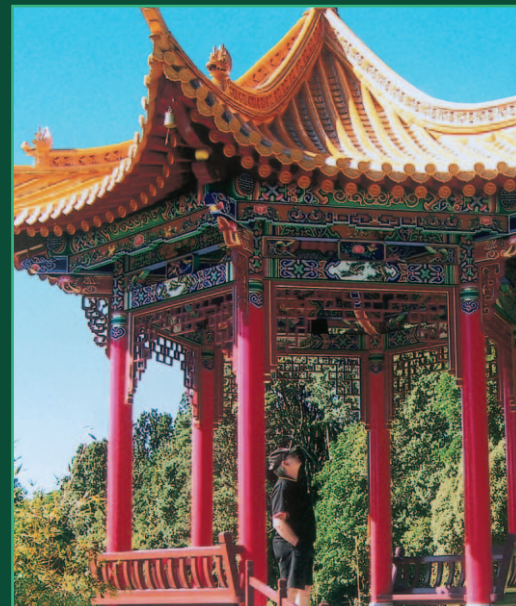


In New Zealand, PO Box 38-242, Wellington Mail Centre  
Call 0800 RESENE, visit [www.resene.co.nz](http://www.resene.co.nz)  
or email [advice@resene.co.nz](mailto:advice@resene.co.nz)

**Resene**  
the paint the professionals use

In Australia, PO Box 785, Ashmore City, Queensland 4214  
Call 1800 738 383, visit [www.resene.com.au](http://www.resene.com.au)  
or email [advice@resene.com.au](mailto:advice@resene.com.au)



## crafted with care

Combine a generous gift of 12 Chinese craftsmen and 34 tonnes of timber, stone and carvings shipped over in two containers from the people of New Plymouth's sister city Kuming City in China and you have the resources you need to create the Springwind Pavillion and Garden in Brooklands, New Plymouth. The garden, adjacent to The Gables, is entered through the Moon Gate and features a meandering path through to the pavillion.

Exquisitely painted with a system of **Resene Quick Dry Acrylic Primer Undercoat** followed by two coats of **Resene Hi-Glo** gloss acrylic and **Paint Effects** finishes, all artwork was done freestyle without the safety of a blueprint. The design was based on blocks of colour and developed into symmetrical designs within which small cameo classical landscape scenes were painted. The painted pavillion is offset against a carefully planned garden. Garden plantings will develop into full flourish as the garden ages gracefully, providing residents with changing scenery on each visit.



Resene: New Plymouth

## right impression



after

before



Client: The Pavilion Apartments  
Painting Contractor: Michael Ross Painting  
Resene: Jeff Wilson, Trade Sales Representative;  
Faye Philp, Mt Maunganui Colour Consultant

When luxury accommodation is your business, immaculate paintwork is a must to ensure your guests get the right impression before they are welcomed indoors. The Pavilions Apartments, nestled under Mt Maunganui and a road crossing away from the beach, have undergone a full exterior repaint to rejuvenate the street frontage and provide protection from the prevailing natural conditions of windborne salt and sand, an aggressive combination that tests even the highest quality paint finishes.

The **Resene RenderRite** electronic colouring service was used to visualise the selected colour scheme on the building before the painting commenced, ensuring that all parties were in agreement on the final look to be created before a single can of paint was opened. Coated liberally in **Resene X-200 Waterproofing Membrane**, a popular neutral palette of **Resene Double Fossil** (green beige) and **Resene Double Grey Olive** (green beige) were combined with gates finished in **Resene Diesel** for a minimalist finish that would complement, rather than overpower, the building's style and environment.

The right scheme to sit this complex comfortably into the streetscape.





## classic gateway

Undertaking the Cuba Jackson Apartments combined residential and retail development of 17 apartments plus ground floor retail in an historic precinct was destined to raise the eyebrows and tempers of those fearing an invasion of modernity. These fears were laid to rest once the project started to take shape at the corner of Cuba and Jackson Streets in Petone, Wellington. The importance and prominence of the site as the gateway to Petone was paramount to the design.

Saturated natural earth and nature colours are complemented by the strong modern Wellington joinery. Outside a four colour palette of **Resene Tsunami** (grey blue), **Resene Vanquish** (reserved red), **Resene Wasabi** (dull lime green) and **Resene Rust** (oxide orange), identify individual verandahs of the apartments each framed by charcoal and neutral colours in hues of **Resene Mondo** (grey green neutral), **Resene Diesel** (red black) and **Resene Napa** (grey beige). Exterior weatherboards are prefinished in **Resene Waterborne Woodsman** tinted to **Resene Crowshead**, a dark blend designed to work with the charcoal tonings. **Resene Sonyx 101** semi-gloss acrylic over a primer coat of **Resene Concrete Primer** adds a pleasing easy clean sheen to verandahs made of Titan Board.

The neutralised palette framing strong features concept is continued within in **Resene Zylone SpaceCote** low sheen waterborne enamel – dark exterior tonings making way to **Resene Chrome White** (greened white) from the **Karen Walker** chart offset against special colour selections of the client.

The piece de resistance, the kitchens are apartment state of the art, complete with kitchen joinery finished in **Resene ArmourCat**, an acid catalysed range of products offering tough and durable pigmented, metallic and clear finishes for a vast range of cabinetry, joinery and furniture applications.

Dubbed tomorrow's classic today, the appropriateness of design to site is expected to be a strong motivator for other local buildings to refurbish and rebuild with empathy.

Architect: John Mills Architects  
Building Contractor: Blair Spicer, Men in Building

Painting Contractor: Edmonds Commercial  
Resene: Camille Jaspers, Wellington Architectural Services Representative



## dinner dollar

Serving up meals to the liking of all guests is all in a day's work in the new million dollar Minx dining room and bar and Rootes Bar in Lichfield Street, Christchurch. The interior styling at Minx is distinctive, with a large open plan kitchen allowing customers to sit at a bar and literally talk to the chefs while they are cooking. A dismantled Hillman Minx car hangs on the wall, framed in the same way you would buy a toy model car. The décor is 50s and 60s kitsch style - red leather, dark wood and etched mirrors.

To make way for the new dining and imbibing experience the existing building interior was gutted and rebuilt and minor alterations were made to the exterior. The new paperfaced plasterboard and timber are coated in **Resene Half Vienna** (soft cream) with feature walls in **Resene Roadster** (bright red) and a steely entrance in **Resene Diesel** (red black) and **Resene Silver Aluminium** (silver metallic) to set the scene as soon as you walk over the doorstep.

Serving up a daily changing menu described as honest cuisine, guests will need to be on their toes to sample all the dishes.



Painting Contractor:  
Peter Scott  
Resene: Nigel Turner,  
Trade Sales  
Representative



## tone on tone

Nicknamed the 'purple lady', Erica Martin had a challenge on her hands when asked to collaborate on a colour scheme with Architects Judi Keith and Ewan Brown for the exterior of their Mt Victoria, Wellington residence using variations of Resene grey hues. Casting the usually favoured warmth of blues blended with reds aside, a monochromatic scheme was devised for all sides.

The original South facing entrance is grounded with **Resene Ship Grey** (dark grey) joined by **Resene Alabaster** (blackened white) on cornerboards and facings. The depth of grey was lightened to the fresher **Resene Triple Concrete** (clean light grey) on the new North facing addition. Doors were finished in **Resene Delta** (mid grey) with the entry door striking in **Resene Nero** (near black).

**Resene Lumbersider** satin acrylic used on the weatherboards is forgiving to the imperfections in the substrate softening the darker greys blending them into the style of the house, with the higher gloss of **Resene Lustacryl** semi-gloss waterborne enamel on doors and **Resene Super Gloss Enamel** on windows punctuating these features for impact.

The finish is a stylishly urban edge to a beloved classic beauty.



Colour Selection: Erica Martin, erica.martin.designs  
Painting Contractor: Redshirt Painters  
Resene: Camille Jaspers, Wellington Architectural Services Representative

## seaside castle

Inspired by an elite property in the South of France, "le Chateau par la mer" or 'the castle by the sea' is the first home specially built from handcut Mt Gambier limestone in Royal Albert Ave on the exclusive Sovereign Islands. An architecturally designed breathtaking mix of new world luxury with old world style and charm, the property features exterior hand cut limestone and internal cavity brick with limestone features. Internal living is sumptuous from the five ensuited bedrooms through to the home theatre room with wet bar, authentic stone wine cellar with wrought iron features and six metre stud in social spaces.

The exterior is lightly textured with **Resene Sandtex** mediterranean effect and **Resene Lumbersider** satin acrylic on soffits tinted to a custom colour match to a limestone block. Inside two coats of **Resene Zylone Sheen** low sheen acrylic provide relaxed living in the form of **Resene Spanish White** (complex neutral), **Resene Triple Spanish White** and **Resene Navarone** (camel beige) complemented by **Resene Lustacryl** tinted to **Resene Spanish White** on woodwork.

Combining tasteful luxury living with direct beach access, this home screams quality fit for royalty.



Painting Contractor: Nicework  
Painting Contractors  
Resene: Brendan Armstrong, Trade  
Sales Representative;  
Liz Goodman, Architectural  
Services Representative



## harbour side



A new home in Harbour Road, Tauranga combines long hard days working with glorious views out over the Tauranga Harbour with a second storey office area sited to capture the panoramic vista. When the work day is done, leisure beckons with the beach just a hop, skip and jump across the road before reaching the sandy shores.

With salt-laden air surrounding the home day and night, a durable exterior system of **Resene Lumbersider** tinted to **Resene Blue Charcoal** (ultra deep blue) has been applied over the Hardiplank substrate

combined with copper corners for style and a special colour blended to the client's taste on texturework to complement the main body of colour. Inside, the easy to live with low sheen of **Resene Zylone Sheen** graces all walls in a light hue, providing a relaxing environment that draws in, rather than detracts from, the enviable view.

Location location location with class.

Architect: Brendon Gordon Architecture Ltd  
Interior Decorator: Jennifer Bayley Interiors

Painting Contractor: Barton Painting  
Resene: Tauranga ColorShop





## two wishes



The first Wishbone restaurant painting project in Nerang was so successful that Resene were called back for an encore with a second Wishbone restaurant in Ferry Road, Southport. Working with owner preferences, a colour palette was crafted by Resene staff to fit the atmosphere and clientele.

A popular takeaway cum dine in food stop, Wishbone is a haven for chicken, burger and salad lovers. Keen for maximum exposure, Resene Lumbersider tinted to Resene Moon Yellow (bright yellow) gleams on the outside with Resene Zylone SpaceCote tinted to Resene Roadster (bright red) and white on the inside. Resene Smooth Surface Sealer was used over Formica as an adhesion coat prior to topcoating, while the exhaust rangehoods were finished in Resene Vinyl Etch to promote topcoat adhesion and prevent rust.

With the prime location and exterior bold scheme drawing in the crowds, keeping up with demand is the next challenge.



Resene: Liz Goodman, Architectural Services Representative; Burleigh ColorShop

## learning hotspot



The QUT Campus in Beams Road, Carseldine development embodies its modern approach to learning with its structure bounded by modern architecture and material selection.

Two coats of sleek Resene Hi-Glo Aluminium shines over Resene Quick Dry Acrylic Primer Undercoat topped in a protective coat of Resene Multishield+.

The silvery tone lends a futuristic edge to the deep vintage red tones of Resene Vanquish (reserved red) and comfortably becomes part of the scenscape of the campus.

Painting Contractor: Concept Painting & Building Services  
Resene: Jason Osborn, Queensland Trade Sales Representative

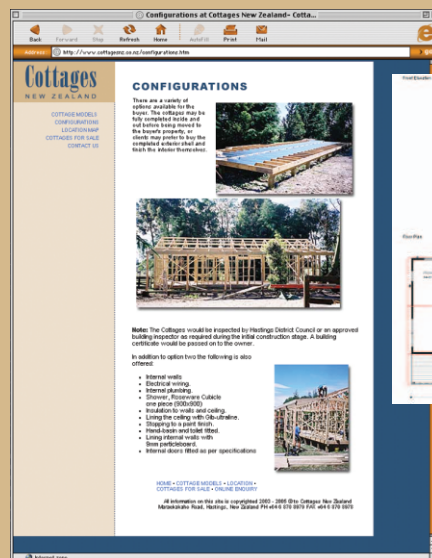
## cottage delivery

Proving good things come in small packages, the cottage series developed by Cottages New Zealand is rapidly finding itself more and more new land to call home. Various designs now reside from Mahia down to Porangahau, with a cottage in the Ruapehu National Park acting as a ski lodge.

Identifying demand for a larger version and greater personalisation, the latest design is for a three bedroom 90 square metre variant joined by extended options in the 50, 60 and 80 series and repackaged designs for the growing use of cottages as office space.

Cottage exteriors are painted using Resene Lumbersider satin acrylic or stained using Resene Waterborne Woodsman in Resene hues of the customer's choice. Inside Resene Zylone Sheen low sheen acrylic features extensively with Resene Zylone SpaceCote low sheen waterborne enamel in wet areas.

A new fabrication plant in Irongate Road, Hastings completed in 2004 allows cottages to be constructed side by side undercover enabling continuous production irrespective of weather conditions and protection of materials from the elements until sealed correctly. Cottages are completed before being delivered to either remote or local locations, all within two months of the start of planning. Easy on the budget and decision making, see one of the Cottage series for yourself at 1172 Maraekakaho Road, Hastings or visit [www.cottagesnz.co.nz](http://www.cottagesnz.co.nz).



Designer: Brian Musson, Conceptus  
Painting Contractor: Wayne Bacon  
Producer: Cottages New Zealand  
Resene: Helen Clayton-Greene, Hastings Trade Sales Representative



The Resene News now extends beyond these printed pages

**snaps  
shots**

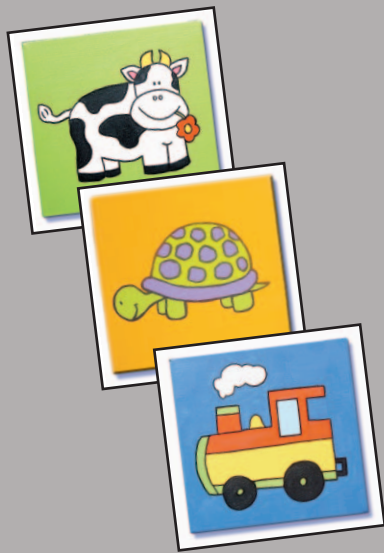
Check out more projects online at [www.resene.co.nz/archspec/products/index.htm](http://www.resene.co.nz/archspec/products/index.htm)



### here there

With little knowledge of paint, **Moveable Furniture**, developed a professional working relationship with their local Resene ColorShop using their advice to help develop their outdoor furniture business making Cape Cod furniture in H3 treated NZ Pine handpainted in Resene to keep it looking good for years. With the chair upkeep done for you, the Kaiaua chair is built for relaxing.

Creator: Moveable Furniture  
<[www.moveablefurniture.co.nz](http://www.moveablefurniture.co.nz)>



### four f's

Purple Turtle Creative Decor grew from a love of children and art. Created using Resene paints and colours from the Resene Total Colour System, the creations are bright and bold, customised to suit the child and their room. Children's art that works with the space not against it.

Creators: Amanda Abrahams and Jane Young at Purple Turtle Creative Decor  
<[www.purpleturtle.co.nz](http://www.purpleturtle.co.nz)>

### your name here

If you would like your next project to appear in the Resene News or on the Resene website in the Products in Action section, complete a Resene News submission form and send it in to Resene Head Office with photographs of the nominated project. Copies of the submission form are available from your local Resene Representative or ColorShop, or call 0800 RESENE (NZ) or 1800 738 383 (AUST) for a copy. To be eligible for inclusion the majority of the project must be completed in Resene paint.

# brushstrokes



## repelled

Keen to continue to minimise the effects of decorating on the environment, the Resene technical team have developed a new waterborne version of Resene Aquapel water repellent.

Resene Aquapel is a clear water repellent treatment formulated to help control efflorescence and give a long-term water-beading effect to deter water penetration. It may be used on its own or as a primer under waterborne coatings, especially Resene AquaShield mineral effect.

The product is ideal as a clear finish over concrete to maintain the natural appearance while still providing it with some protection against the elements and slowing down the growth of mould, lichen and the like as these organisms will find it more difficult to grow on the coated surface than on an uncoated one.

Unlike its predecessor, waterborne Resene Aquapel is suitable for both interior and exterior use and has significantly lower VOCs of less than 10 gm/L. See the new Resene Aquapel Data Sheet D65, Jun 05 update for further technical information. Copies of Resene Data Sheets are available from Resene ColorShops and Resellers, online from the Resene website or on your WAP enabled cellphone by typing in 737363.com.

## grain gain

Timber exteriors are a perennial favourite whether the stained weatherboards on a city residence or the favourite wooden lounge at the beach. The popular Resene Woodsman chart has expanded to 40 hues, including a new black wood stain and a yellowed natural hue to provide greater selection in these colourways. The new chart also includes an extended selection of hues in solventborne Resene Woodsman, an ideal selection for colouring decks and wooden furniture while still allowing the natural grain to show through.

The Resene Woodsman woodchip sample box has been updated to include the new colours to make visualising the new colours easy. Copies of the chart and individual wood chip samples are available from Resene ColorShops and Resellers or order your copy online from [www.resene.co.nz](http://www.resene.co.nz) (NZ) or [www.resene.com.au](http://www.resene.com.au) (AUST).

## prep to clean

The joys of modern waterborne technology mean that provided you repaint before the coating is peeling and flaking, you can actually save yourself hours of painstaking preparation work. If the surface you are planning to coat, such as weatherboards, is sound, a quick wash down with new Resene Paint Prep and Housewash to clean the surface, followed by drying time and then your selected topcoat system, is all you need. Leave maintenance work too long and the preparation work required multiplies rapidly. Poorly adhering coatings require extensive surface preparation to remove them and provide a sound surface for painting. Resene Paint Prep and Housewash is designed to wash down surfaces prior to painting to remove any dirt that may be present and is also ideal for annual washing of buildings and homes. You wouldn't wash a car without detergent, so why would you attempt to wash a building or house without it?



Fancy colour matching tabletops to kitchen colour schemes or perhaps replacing marble with something a little different? Then Innovation on Glass may have just what you need to complete the look. Colour Back Glass, supplied by Innovation on Glass, is finding itself a home in increasingly varied applications to add a touch of luxury to practical working areas such as kitchens, bathrooms and commercial applications. However, with a little imagination, the Colour Back Glass is equally at home in retail environments, general living areas and the like as a feature of the space.

The trend towards translucency of finishes has seen a surge in the popularity of Colour Back Glass, a product that combines colours from the Resene Total Colour System, including the popular Resene Metallics and Special Effects range, or a custom match to corporate or other colour selections, with the alluring mystique of the depth of glass casting a unique twist on the colour hidden beneath.

Using the exclusive GCP paint system, formulated and tested by Resene for wet and dry adhesion, permeability, heat, boiling water and humidity resistance, performance of Colour Back Glass applied by a network of licensed applicators is guaranteed for 10 years. The system replaces more traditional and expensive methods of colouring glass and incorporates the spray

application of a specially formulated paint system onto glass to impart a permanent colour finish. The glass acts as a looking glass into the colour beneath and as a protector against normal wear and tear.

Popular in wet areas, such as bathroom linings and shower corners in place of tiling, stainless steel or marble and as splashbacks in kitchens and bathrooms, Colour Back Glass is being transformed into wall panels and dividers in commercial environments, text walls in place of traditional signage and as a decorative element both inside and out. A myriad of frosted glass options extend the selection even further.

A recent project at St Josephs Church, Basin Reserve, Wellington was a collaboration between Metropolitan Glass Wellington, Westview Aluminium and Innovation on Glass to create feature windows of Resene Pohutukawa on clearfloat toughened glass that are equally striking no matter the viewing point.

## glass in colour



With an Innovation on Glass ceiling built into the Beehive boardroom as part of its 2003 refurbishment to facilitate even lighting across the room providing the necessary proof, one has the luxury of selecting for practicality or decorativeness without having to forego either property.

Supplier: Innovation on Glass



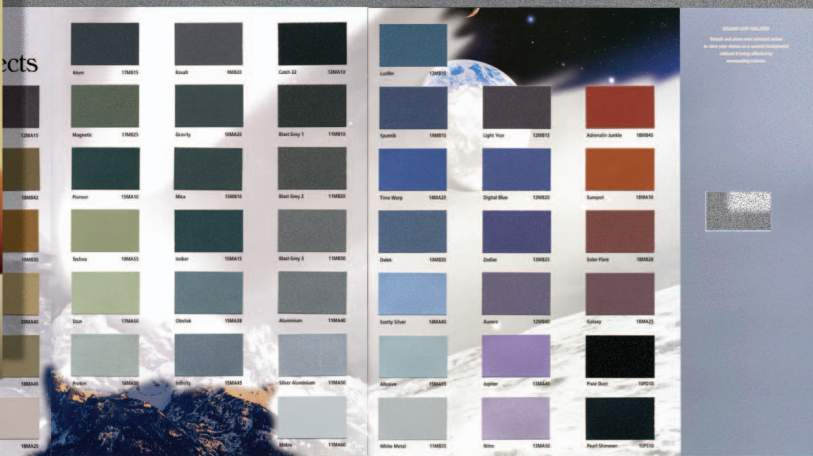
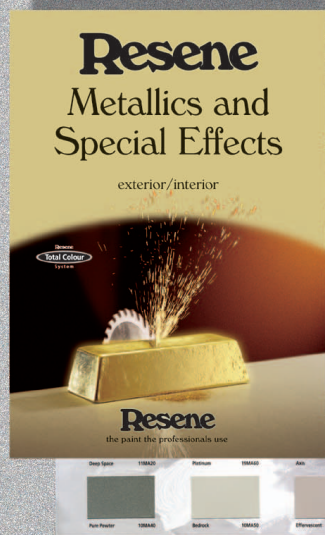


## cutting edge

The Resene Metallics & Special Effects chart, a goldmine of metallic treasures, has become an even greater treasure trove with its new selection of hues including favourites from previous Metallics collections, The Range collections and some new metallic effects to keep up the futuristic edge.

New whitened metallics, such as Resene White Metal, find their way onto the chart – softer than their predecessors, these metallics balance between dazzling metallics and translucent pearlescents.

Copies of the chart are available from Resene ColorShops and Resellers or order your copy online from [www.resene.co.nz](http://www.resene.co.nz) (NZ) or [www.resene.com.au](http://www.resene.com.au) (AUST).



## magic blue

If you ever wondered what Resene Swimming Pool Paint Magic Blue looks like you can now see it for yourself on the tweaked Resene Decks, Paths, Driveways and Recreational Areas colour chart.

The chart has been updated to also include Resene Kwila Timber Stain, a kwila coloured stain suitable for rejuvenating old and new kwila and hardwood deckings and furniture. Originally launched under the name Resene Kwila Decking Stain, the product has proved ideal for outdoor furniture too, forcing a name change to Resene Kwila Timber Stain to better reflect its broad use.

Copies of the chart are available from Resene ColorShops and Resellers or you can order your copy online from [www.resene.co.nz](http://www.resene.co.nz) (NZ) or [www.resene.com.au](http://www.resene.com.au) (AUST).

## freeform

Engaged in an investigation of work primarily concerned with the creation of paint skins to explore relationships between spontaneity, control and the body, Geraldine Plowright has created striking artworks of freeform paint.

The works specifically address the issue of paint as paint since the skins are removed from any support and exist as discrete objects.

Projects have included a four metre long paint skin that was hung off the wall and draped onto the floor. Expanding the concept via her Elam School of Fine Arts studies, her current focus is on the relationships between these skins creating paint masses with the idea of many paint bodies making up one larger body.

At her side throughout all this work has been Resene Enamacryl, waterborne gloss enamel providing "a consistency that I have been unable to find in other brands. Because of this my latest works have been comprised entirely of Resene paints expressing an excess of colour with an amazing gloss. I am excited by the prospect of extending this work further as the discovery of Resene paints has enabled me the freedom to engage in such investigations without being inhibited by technical difficulties."

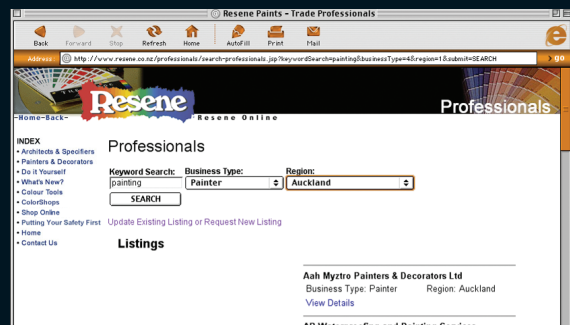
With paint normally applied onto a wall in a micron measured coat, Geraldine has discovered a colourful way of creating artworks unbounded by substrates and a guaranteed way to keep the Resene paint factory running through the sheer volume of paint required to create each work.



Artist: Geraldine Plowright

## professionals in demand

Hundreds of professionals from painters and wallpaperers through to architects and colour consultants have listed their business on the free Resene Professionals Wanted trade listing on the Resene website. The beauty of the web is that there is no limit on space, giving us plenty of room to add more listings - so if you aren't listed yet, either pick up a copy of the Professionals Wanted brochure from your local Resene ColorShop or register for a listing online on the Resene website.



The new section is a valuable resource for homeowners and other industry professionals. Free to use and free to list, what are you waiting for?

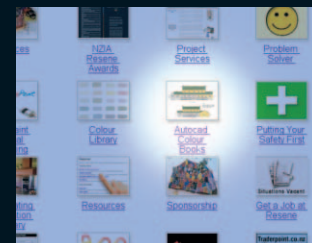
See [www.resene.co.nz/professionals/search-professionals.jsp](http://www.resene.co.nz/professionals/search-professionals.jsp)

## auto colouring in

AutoCAD have just launched AutoCAD 2006. The Resene colour books developed for the AutoCAD 2004 and 2005 versions are perfectly transferable to the new technology. Resene AutoCAD colour books include the names, codes and RGB values of all Resene colours.

Download them from the Resene website direct into AutoCAD and recolour your projects in AutoCAD using Resene colours.

Visit the Resene website, click on the Architects and Specifiers link, then the AutoCAD Colour Books icon to download the Resene colour books you need.



**Incorrect Mailing** If you are receiving multiple mailings or you would like us to change your mailing details, please call 0800 RESENE (NZ), email us at [advice@resene.co.nz](mailto:advice@resene.co.nz) or fax 04-577-0664 (NZ) giving the current address where you are receiving mail and the change/s required.