

Resene

NEWS

Resene - the paint the professionals use

Resene Paints Limited PO Box 38 242 Wellington Mail Centre Tel +64-4-577 0500 Fax +64-4-577 0664
Internet Home Page: www.resene.co.nz Email: advice@resene.co.nz Technical Help-Line: 0800 Resene (737 363)

Tulsi, the source of contemporary Indian takeaways in the James Smith Markets' foodcourt in Cuba Street, Wellington, has recently been spiced up with a new interior fitout designed to reflect the nature of the food served - that is, hot and spicy.

Texture and metallic effects are popular trends for commercial fitouts, enabling Property Managers to add visual interest to a building at little more than the cost of a standard decorative product.

The walls and curved bulkhead were finished in Resene Lustacryl semi-gloss waterbased enamel Fuel Yellow and Jazz, while the front joinery was finished in Resene Lustacryl Revolver. The floating flat canopy sparkles with a finish of Resene Enamacryl Metallic Enterprise topped off with one coat of Resene Aquaclear acrylic urethane for added durability. The kitchen opening and all doors are also finished in Enamacryl Metallic Blast Grey topped with a glaze coat of Resene Aquaclear for easy cleanability.

Resene Sandtex tinted to a special colour mix was used on the low wall to the side of the counter to offset the metallic and semi-gloss finishes.

A 3D line sketch complete with the desired paint colours and finishes was given to the painter as a reference tool enabling them to literally 'paint by numbers'.

hot 'n spicy



Builder: Capital Construction Ltd
Designer: Smoked Hoki Design, Justin Leonard
Painting Contractor: Pacific Painting Company, Mike Ashton
Resene Paints: Emma Simmonds, Wellington Architectural Representative



world famous in new zealand

World Famous in NZ is a slogan all kiwis will be familiar with due to its long association with the L&P brand of softdrink. Located next to the most photographed town icon - the famous L&P bottle itself standing 5.8m tall - the World Famous in NZ Café was built to capture the pure essence of L&P. Building on this brand association and surrounded by history, the new World Famous in NZ Café and Bar in Paeroa will make kiwis and tourists alike feel instantly at home.

Resene Zylone Sheen low sheen acrylic was specified for the exterior Insulclad sponge finish walls and interior broadwall areas, to give a lower gloss look than Resene Lumbersider. Brush and roller application were used on the exterior to achieve the world famous finish.

Resene Uracryl 403 Clear was specified on the bar top to minimise damage from daily contact during normal trading conditions. The colour scheme was confirmed with confidence using a Resene RenderRite rendered image that illustrated how the building would look painted in the specified colours.

If you are planning to be in the Paeroa region, the gourmet L&P ice-cream comes highly recommended.

Building Designer: Piako Plans, Mark Lowe
(piakoplan@xtra.co.nz)
Interior Designer: Leslie Sterling
Painting Contractor: GW & RJ Povey Ltd, Gary Povey
(gwpovey@xtra.co.nz)
Property Developer: Tony Coombe and John Tregidga
(L.P.CAFE@xtra.co.nz)
Resene Paints: Marise Marriner, Matamata Sales Representative;
Meryl Southey-Brown, Auckland Colour Consultant



mellow yellow

There is little worse than painting an exterior area only to find the colour has faded in less than three years. Unfortunately this is exactly the predicament that Repco Auto Parts found themselves in late last year. Exterior coatings supplied by another company were fading upon exterior exposure resulting in a finish akin to a patchwork quilt.

Repco Auto Parts approached Resene to resolve the fading issue and development began on customised colours using the Resene Total Colour System. The new colour system was designed to deliver maximum durability in the exterior environment and facilitate a more manageable maintenance schedule for repainting.

To accommodate the wide variety of substrates requiring coating - from timber, corrugated iron and concrete on the older stores to tilt slab and iron-run Colorsteel on the newer outlets - the paint system was selected for its versatility. Corporate colours of Repco Yellow and Black were applied in a Resene Hi-Glo acrylic gloss finish for maximum gloss.

While the resulting tinted paint system was more expensive than the previous coating, the cost difference will be quickly recouped with less frequent maintenance requirements saving Repco Auto Parts both product and labour costs.

To ensure colour uniformity, Resene produces Repco product in complete batches. All stores draw from the same stock giving Repco assurance that their national brand identity will be maintained regardless of the location of the individual store.

Work is now underway to roll the new colour system out progressively as required to the nationwide Repco chain of 68 stores. Specifications and tender responsibility will be managed by Resene at Repco's request, allowing customised specifications to be developed for each site.

Painting Contractors: B & A Lendich (Repco Mt Wellington, Onehunga)
 J & F Decorators (Repco Manurewa)
 Resene Paints: Chris Heal, Parnell Architectural Services Representative (initial set-up)
 Daryl Spinetto, Business Development Manager (national roll-out)

after
 before



before
 after



before
 after



calling all holidayseekers



From left: Mark Aschoff, Neil Anderson, Steve Hooper, Graeme Nicoll.

Architect: Nicoll, Blackburne Architecture, Graeme Nicoll
Owner: Steve Hooper
Painting Contractor: Neil Anderson
Resene Paints: Mark Aschoff, Hawkes Bay Branch Manager

Two new Resene products have been utilised to complete the new Alfresco Motor Lodge in Gladstone Road, Gisborne.

The exterior Harditex panels were treated with a unique paint system of Resene Quick Dry acrylic primer undercoat followed by Resene Plastercote applied by hopper gun with high air flow, resulting in a 'flattened' coarse grainy finish. The desired textured effect was achieved with a single coat application, making this

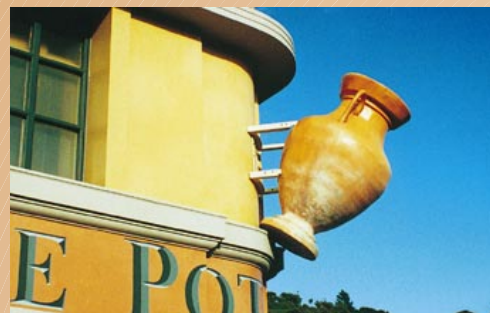
new product popular with both the owner and the painter. The final colour effect was achieved through the application of two coats of Resene Lumbersider satin acrylic tinted to a new colour - Anderson's Tan.

All interior walls were finished in Resene Zylone SpaceCote low sheen waterbased enamel to give an attractive, yet extremely durable, low sheen finish.

keep on moving...don't stop

The transport industry is not a place for those who wish to stand still. The new Hamilton Transport Building at the corner of Anglesea and Bryce Streets in Hamilton is no exception to this rule. The smooth tilt slab exterior was coated with Resene Smooth Surface Sealer adhesion promoter to provide a key for the subsequent topcoats. This was followed by two coats of Resene Sonyx 101 semi-gloss acrylic and one coat of Uracryl 403 for maximum graffiti protection. This building has enjoyed extensive positive press in Hamilton due to its innovative appearance and positive addition to the built environment.

Builder: Mainzeal Building Contractor, Hamilton City Council
Designer: Meritec (www.meritec.org.nz)
Painting Contractor: Keith Mahon Painters
Resene Paints: Peter Smithers, Hamilton Sales Representative



the pot spot

The exterior repaint of The Pot Warehouse in Hutt Road, Kaiwharawhara Wellington has caused many an eye to veer to that side of the road. The stunning custom mixed exterior colour 'Pot Warehouse Tuscany' makes this character building difficult to miss. Visible from both the Motorway and Hutt Road

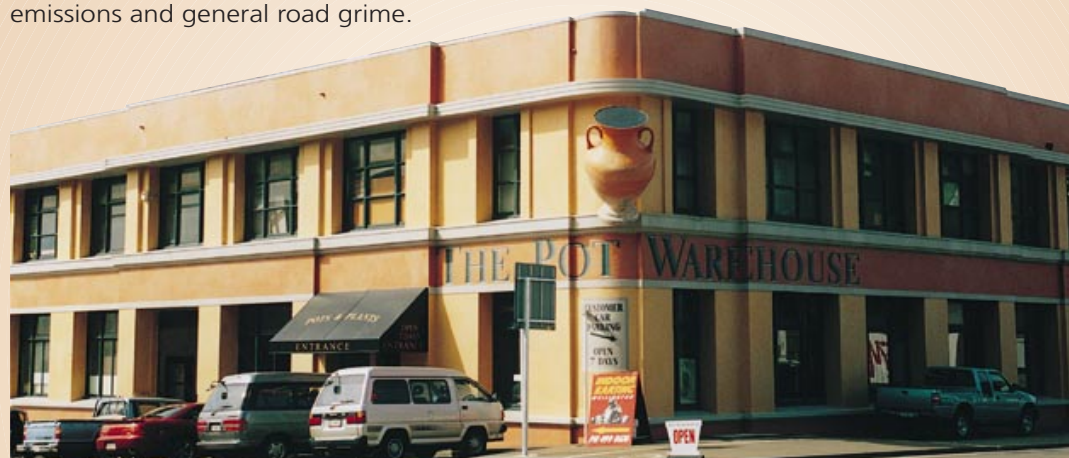
Owner: David Keuche
Painting Contractor: Russell Barr
Painting Contractor (Paint Effects Medium) - Mike Jing
Resene Paints: Russell Davidson, Wellington Sales Representative

- the two main routes into and out of Wellington - the new location and exterior refurbishment have quickly been rewarded by significantly increased turnover.

The original brick and cementitious plaster substrates were finished in two coats of Resene Wintergrade Lumbersider cold temperature curing acrylic and one coat of Resene Paint Effects Medium to achieve the terracotta effect. The paint system was topped off with one coat of F.10 glaze to provide protection against traffic emissions and general road grime.

Resene Wintergrade Lumbersider enabled the painter to stay on-site and continue painting. If a standard paint had been specified, the weather conditions would have forced the cessation of painting and extended the time to completion.

The Paint Effects Medium colourwash was used to add visual dimension to the paint system and is a critical element in the final eye-catching effect.



multiple personalities



A new family home in Poplar Lane Hamilton illustrates how distinctive colour and furnishing combinations can give adjacent rooms unique personalities. Critical to achieving such a perfect finished look is the level of finish of the Gib Board.

A Gib Board Level 5 finish was specified to provide the optimum surface for topcoating. This is especially critical with metallic finishes as the aluminium flakes will tend to accentuate surface imperfections. A Gib Level 5 finish necessitates a number of design and building elements, including skimcoating of the entire surface with a surfacer, such as Resene Broadwall Surface Prep.

A combination of Zylone Sheen low sheen acrylic, Enamacryl Metallic and Sandtex in hues of Avocado, Hot Chile, Sputnik, Silver Aluminium, Sector and Chino were used to create the three finished room looks. Distinctive colours and tactile effects accessorised with well chosen ornaments, cushions and pictures ensures each room has a character of its own.

Builder: Harwood Homes
 Designer: Harwood Homes, Peach Design
 Interior Decorator: Shapze Interior Design Studio, Fely Worth
 (howard@shapze.co.nz)
 Painter: Paul Braunius
 Resene Paints: Judy Flashman, Hamilton Shop Manager

local chatter



The recent repaint of the Raglan Town Hall has certainly drawn the locals out, with many heard to compliment the Art Deco scheme. As the only art deco building in Raglan, it was always destined to stand out from its neighbours...the bright new colour scheme has made this a certainty.

With walls of Resene Zombie (maybe not the best colour name for a town hall!!!), a roof of Resene Rock and accents of Crab Apple, Pumpkin, Tarawera, and Vesuvius, the finished town hall now has a colour scheme that does justice to its architectural design.

Designer: Rosie Style, Rosie Worsp
 Interior Decorator: James McGaig
 Resene Paints: Resene Hamilton

sunday sunday

St Mary's Catholic Church in Manuka Street Nelson is an historic church that the local community can be proud of. Classic architecture and detail has recently been enhanced by an all over exterior repaint in a range of Resene Environmental Choice approved products. The roof was finished in Resene Hi-Glo Roof Cloud Burst, the walls in Lumbersider satin acrylic Half Dutch White, and the trim and joinery in Resene Enamacryl waterbased gloss enamel Nepal and White.

Builder (repair work): Coman Construction
 Painting Contractor: Programmed Maintenance Services, Lyall Stewart
 Resene Paints: Richard Haynes, Nelson Branch Manager



hickory dickory dock

The Clocktower at the Cardrona Alpine Resort acts as a landmark to all those that visit. To return it to its previous glory, the severely chalked original cement based paint was waterblasted then sealed with Resene Sureseal to bind up the porous substrate. The topcoat system consisted of two coats of Resene Wintergrade Lumbersider tinted to Waikawa Grey.

With the ability to cure at temperatures as low as 2°C, Resene Wintergrade Lumbersider enabled this high altitude clocktower to be painted without jeopardising the full cure of the paint system.



Painting Contractor: Geoff Wilson Painters and Decorators
 Resene Paints: Annette Gin, Queenstown Sales Representative

giddy heights

Ron Bakker is literally at the top of the painting profession - it would be difficult to get much higher than the roof of the Wanganui Ski Club on Mt Ruapehu.

Originally built in 1950, the Wanganui Ski Club is the highest altitude ski club hut on Mt Ruapehu at a height of 5900 feet. The roof is exposed to extremely harsh weather conditions from frost and sleet to salt, volcanic ash and relentless summer sun, playing havoc with the paint system.

The weathered Colorsteel roof was first washed with Resene Roof Wash and Paint Cleaner to clean off all contamination. Following spot priming with Resene Alumastic, the roof repaint was completed with two coats of Resene Hi-Glo Roof Cocoa Brown for maximum protection against the elements.

Painting Contractor: Allan Tong Ltd, Ron Bakker
 Resene Paints: Neville Rowan, Wanganui Sales Representative





in good company

When you paint your walls in Resene Shiraz, you know you are in good company. This Lincoln residence's kitchen and dining area were finished in Resene Shiraz, the family room in Resene Putty...

Interior Decorator: Anita Lewis (lewis_anita@hotmail.com)



bright spark

The new Hunter Design Studio and Office at 21 Percival Road, Paraparaumu is a treat. In typical kiwi DIY style, Darren Hunter designed and painted the building himself...

Designer & Painter: Hunter Design Studio, Darren Hunter
Resene Paints: Richard Chandler, Horowhenua Branch Manager



home is where the heart is

The Chan home in Roxburgh Street...

Builder: Mike Frost Builders
Painting Contractor: Arthur Gibbs
Decorators: Tony Gibbs
Resene Paints: Carolyn Atkinson, Wellington
Colour Consultant



mounted terraces

The fresh colour scheme of the new Terraces in Mt Maunganui enhance the design...

Architect: Brown and Day Architects, Auckland
Builder: Greyshield Builders, Auckland
Painting Contractor: Coastal Coatings, Mt Maung
Resene Paints: Faye Philip, Mt Maunganui Sales Representative; Chris Heal, Auckland
Architectural Services Representative

your name here

If you would like your next project to appear in the Resene News or on the Resene website in the Products in Action section, complete a Resene News submission form and send it in to Resene Head Office with photographs of the nominated project. Copies of the submission form are available from your local Resene Representative or ColorShop, or call 0800 RESENE for a copy. To be eligible for inclusion the majority of the project must be completed in Resene paint.

Brushstrokes

small batches

A small batch facility has opened at the Resene Naenae factory to maximise production flexibility in the lower volume batches. The inaugural batch was Resene Resitex Coarse Batch #05658 produced in early 2001.



Altex Coatings' managing director Mike O'Sullivan (right) and compliance manager Neil Debenham (centre) receive the ISO 9001 accreditation certificate from Telarc's client manager Tony Salisbury.

The market leader in the protective coatings sector, Altex Coatings Limited of Tauranga is the latest New Zealand company to receive the sought-after ISO 9001 accreditation.

Putting quality management systems in place and constantly monitoring and improving them has been a fact of life for Altex Coatings since the mid-1980's. Accreditation is not a one-off event - it is just the start of an ongoing never-ending programme. The process revolves around staff training, system maintenance and improvement, and independent auditing by an independent quality management organisation.



the new generation

If you think the new Firth Masonry Villa virtual painting programme looks familiar, you are 100% correct. Resene have recently produced a customised Resene EzyPaint for Mode, a planning advisory service run by Firth Industries, with a range of exterior and interior images of Firth Masonry Villas. Now Firth clients have the freedom to virtually paint their Masonry Villa in Resene colours before they start building it.

new and improved



Resene colour charts have been upgraded to include reference tables providing ready access to colour information including tones, reflectance values and Total Colour system codes. Most of the new improved colour cards are now available from your local Resene ColorShop. The Multi-Finish Range, 5252 and 101 Colour Cards have also enjoyed a facelift to give them a truly Resene look.



paint colour cues for 2002

Building on the success of The Range 2000 and 2001, Resene have released The Range 2002 - a collection of 150 classic and contemporary colours designed for the year 2002. The Range 2002 is based on international colour predictions that Resene have tailored to suit the New Zealand lifestyle and environment.

The merging of fashion and technology is inspiring new colour directions and hastening the transition of fashion colours through industries. Technology has made it easy to communicate colour and colour trends, and maximise the speed at which new products and colours are launched.

The fashion/technology connection is encouraging the return to luxurious materials to create an air of elegant sophistication. Materials and colours are blended so that the texture, pattern and colour are virtually indistinguishable from one another. The finish is increasingly being viewed as a complete entity, rather than just pieces of a disparate puzzle.

Like clothing, the concept of monochromatic layering is becoming popular. Texture is the key driver of the finished layered look, with colour playing the ever important supporting role.

The doom and gloom of the Y2k bug is long gone and consumers are looking to the future with confidence.



This confidence allows for a risk-taking attitude encouraging the use of brighter, happier, fun colours in the form of new yellows, oranges, reds and pinks.

Colours are becoming lighter, softer and more complex. While blue is still considered the key colour for

this decade, orange is poised to be the colour we associate with optimism and happiness in 2002.

For more information on 2002 colour trends, check out the new Range 2002 and the Resene website www.resene.co.nz

sticky samples

To make specifying the new Range 2002 colours even easier, Resene are launching a self-adhesive label service to compliment the existing drawdown service.



Specifiers will be able to order self-adhesive chips measuring 100mm x 60mm of the new Range 2002 and Whites & Neutrals Chart colours through the direct drawdown ordering service. Each chip is labelled on the reverse side, giving you a good sized colour sample for direct adhesion to your sample board or specification.

To order the new labels simply write LABEL in the quantity column of the Direct Drawdown Order Form.

The new labels will be available from late July - please check with your local Resene representative or ColorShop if you would like to order these samples.

breaking the mould

Paint films have to put up with an awful lot of abuse during their lifetimes, not the least of which is attack by mould. On painted surfaces, mould looks like dirt and frequently the two cannot be visually distinguished.

Mould is a major cause of paint disfigurement. It destroys the paint's fresh, clean appearance and if left unchecked shortens the life of the paint film. Most high quality paints contain a fungicide but as its killing ability is finite mould will eventually take over. The only way to remove mould permanently is to remove the source of moisture and/or provide adequate ventilation.

Fungicidal washes such as *Resene Moss & Mould Killer* are extremely effective at killing mould with the added benefit of bleaching the moulds clean. However, they have no residual effect - any ongoing effect must be provided by the paint itself or further maintenance.

Most high quality paints contain fungicide at a level designed to cope with normal exposure. There are some occasions and micro-climates (such as damp bathrooms) where additional defence may be needed, which is why Resene has launched new **Resene MoulDefender**.

Resene MoulDefender is an acrylic paint compatible blend of fungicides and algicides, designed to be added at the point of sale when a particular need for extra protection against mould is identified.

Resene MoulDefender will not necessarily prevent all future mould growth as this is impossible, particularly in very damp areas. However, the addition of Resene MoulDefender will significantly slow down the growth of new mould, minimising maintenance requirements. Improved ventilation methods, such as extractor fans in bathrooms, will also act to slow down the growth of new mould.

Resene MoulDefender is available from selected Resene ColorShops nationwide.



a bit on the side

Resene Santano has been renamed Resene Automotive and Performance Coatings, a move designed to more accurately describe the scope of the business following recent success in the performance coatings arena with products such as Kaleidoscope colour shift coatings.

dry as a bone and dead flat to boot

This chart shows only a small selection of the colours that are available in Resene AquaShield. Please contact a Resene Sales Staff member to check the availability of your desired colour.



Resene AquaShield is a high mineral content super-hydrophobic, water repellent coating for application on most porous building materials to impart watershedding properties.

Available in a range of white and light earth colours, Resene AquaShield dries to an attractive mineral flat finish. Colours will lighten with exposure resulting in a natural weathered appearance.

Resene AquaShield combines the water-repellant properties of silicones with a special outer micro-structure considerably reducing the contact area for water and dirt. The result: dirt particles adhere only loosely and are more easily carried away by raindrops, leaving a dry and attractive façade. Ideal for highly stressed weather exposed façades.



Porous substrates should be pre-treated with Resene Aquapel to maximise water repellency and breathability properties.

Maximum water and dirt resistance will be achieved when the coating has fully cured. Full cure takes approximately 1 month but will be accelerated by weathering and elevated temperatures.

Resene AquaShield offers a desirable combination of waterproofing and breathability properties not currently available in other finishes.

For further technical information on Resene AquaShield see Data Sheet D601 or call your Resene representative to view a sample.



sold only when cold

Resene will recommence selling Resene Wintergrade LumberSider and Hi-Glo in a limited colour range over the 2001 winter period.

Resene Wintergrade LumberSider was produced and used successfully on a variety of projects in both 1999 and 2000 when a cold temperature cure was desired. Resene Wintergrade products can be applied in temperatures as low as 2°C and in ideal conditions the recoat time is just 2 hours.

Refer to Data Sheets D34a and D31a and Architects Memo #62 - Cool Coalescings for further information. Call 0800 RESENE for copies or visit www.resene.co.nz

Celebrating

5 years



Water Based Paint
Licence No 1296003

The Resene Environmental Choice range of products turns five in 2001, with the original range released in May 1996.

Today over 70% of the Resene range of paints have Environmental Choice approval for you to choose from.

an apology to paul

In the Beam Me Up Scotty article from the last issue we missed out crediting Paul Foley Design for the exterior design of the Sony showroom - our apologies.



Incorrect Mailing If you are receiving multiple mailings or you would like us to change your mailing details, please call 0800 RESENE, email us at advice@resene.co.nz or fax 04-577-0664 giving the current address where you are receiving the mail and the change/s required.



dusted with gold



Shooters Nightclub in Surfers Paradise have topped off their recent refurbishment in style. Resene Enamacryl Metallic Gold Dust was applied by HVLP spray then topcoated with Resene Multishield+ Gloss for maximum durability. Now nightclub goes can look up and see gold speckles regardless of whether they are inside looking at the Gold Dust finish or outside stargazing.

Colour Selection: Shooters Nightclub Management
Painting Contractor: Geoff Worthing Decorative Effects

doing the irish jig



With a name like Shamrock Hotel, it is not surprising that this hotel in Brunswick Street, Fortitude Valley Queensland features a green exterior colour scheme. Resene Lumbersider satin acrylic in the colours Resene Cyprus and Melanzane was chosen for maximum visual impact and colour durability in the exterior situation.

Applied directly over the old concrete render, the two coat Lumbersider self-priming system was the ideal way to repaint the exterior with minimum disruption to the hotel guests and staff.

Designer: Ryder Hampton Brisbane, Dallas Ryder
Builder: Treway Construction
Painting Contractor: Pezzimenti Painters

what a corker!



The all new Mr Corks Bottle Shop and Tavern in Ipswich Queensland is coated in New Zealand icon colours. The colour scheme of Resene Pohutukawa and Tangaroa was drawn from the Range 2001.

All concrete walls were finished in Resene Lumbersider satin acrylic and trim and joinery in Resene Super Gloss high gloss enamel for a low maintenance finish.

Designer: Ryder Hampton Brisbane, Dallas Ryder
Builder: T.P. Turner Pty Ltd
Painting Contractor: Paul Crossin Painting Contractors



" typical queenslander " with a twist

A common sight when driving around the suburbs of Brisbane is the "Typical Queenslander". Equally common are the faded colour schemes and the need for tender loving care.

This Ashgrove Queensland home's weatherboards have been recently repainted in a paint system of Resene Quick Dry acrylic primer undercoat followed by Resene Hi-Glo acrylic gloss. The owner had already selected their colour scheme from another company so the local Resene branch simply provided a colour match in Resene Hi-Glo. The owner got the best of both worlds - the colour they wanted in a high quality paint.

Colour Selection: Owner

Painting Contractor: Col Keegan Painters & Decorators

location location location

Resene Paints Australia is based in Brisbane with a network of sales representatives stretching up and down the eastern coast. A full of decorative and protective coatings designed for commercial and residential use are available through a network of stockists. The first flagship Resene ColorShop will be opening in Brisbane later this year.



Paint Spot owner stocks Resene

Barry Morgan, the current chairman of the Australian Paint Spot Group, and owner of Morgan's Paint Spot in Levanswell Road Moorabbin sees the Resene product range as the perfect way to offer something new to his customers. This desire for differentiation has seen Morgan's Paint Shop become a Resene stockist from April 2001.



Resene paints can now be purchased at all of the following Australian outlets:

- Resene ColorShop, 240 Robinson Road, Geebung, Queensland
- Resene ColorShop, 7 Production Avenue, Ernest Junction, Queensland
- Butcher's Paint Barn, 256B Charters Towers Road, Townsville, Queensland
- Cairns Hardware, 154 Scott Street, Cairns, Far North Queensland
- Classic Paint Supplies, 137 Bloomfield Street, Cleveland, Brisbane, Queensland
- Goodfellows Handy Hardware, 139 Dohles Rocks Road, Kallangur, Brisbane, Queensland
- Innisfail Plumbing and Paint, 93 Ernest Street, Innisfail, Far North Queensland
- Morgans Paint Spot, 2 Levanswell Road, Moorabbin, Melbourne, Victoria
- Paint City Coolum, Cnr South Coolum Road & Greenoak Drive, Coolum Beach, Queensland
- Paint City Currimundi, Cnr Coora Crescent & Nicklin Way, Currimundi, Queensland
- Paint City Maroochydore, Maud Street Plaza, 24 Trinder Street, Maroochydore, Queensland
- Paint City Noosa, 168 Eumundi Road, Noosaville, Queensland
- Taree Builders Bargain Centre, The Bucket's Way, Lot 7 Gloucester Road, Taree South, NSW
- Cairns Hardware, 393 Sheridain Street, Cairns, Far North Queensland
- Cairns Hardware, cnr Supply & Roberts Streets, Centenary Park, Edmonton, Far North Queensland
- Cairns Hardware, 79-85 Grove Street, Atherton, Far North Queensland
- Resene Paints Australia, 7-16 Loyalty Road, North Rocks, Sydney

If more convenient, contact the Australian Sales Office
by phone **1800 737 383** or email **sales@altexcoatings.com.au**