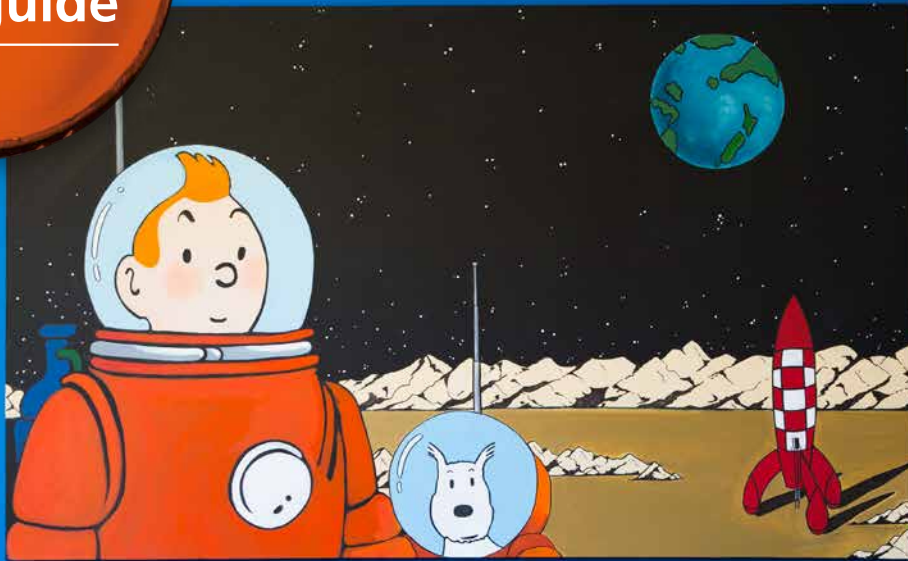




## Resene style guide



Get the look: Resene Super Duper

## shining bright

**Strong, bold and energetic** colours give any room a lift like no other interior element. Sadly, we are afraid of using them, and opt to play it safe, often resulting in bland spaces lacking any sort of personality.

The trick is to get the balance right. Ask yourself, should the colour be the main attraction or just a supporting role? If it's the main, then go all out and paint the entire room. If colour is there to support, then look for more unexpected areas to go bold: doors and window frames, the insides of cupboards, on headboards or drawer fronts.

When it comes to kids' rooms, there are just three words of advice: go for colour. Kids are like sponges, soaking up inspiration from their environment. There is nothing more inspirational than colour, so don't be scared to be generous with it! On walls, shelves, window frames, doors, furniture and accessories; the only limit is your imagination.

Paint is easy to use and affordable. Use low tack masking tape to create stripes, or stencil a random selection of circles or shapes across the wall, you may only need a few testpots to achieve something really eye-catching.

## art space

Resene Snap 

Most girls go through a pink-on-pink-on-pink stage. You can attack it in two different ways: embrace it and make pink the main player, or tone it right back as an accent. If you go for the first option, consider keeping the tones turned down so it's not sickly sweet. There are plenty of gorgeous muted pinks that look great on walls. Then layer up a collection of pinks from pretty pastel through to touches of vibrant neon.



Turn bedroom walls into a mixed gallery and noticeboard space by using Resene SpaceCote Low Sheen – it lets you use the wall as a chalkboard.




Get the look: Resene Smitten

## purple rain

Shades of lavender are a great option to transition kids into rooms that are a bit more grown up. Use purples with an edge of red for a more sophisticated look and team them with deep yellow and white accents.

**tip** Use a Resene colour wheel or Resene Find-A-Colour to find your perfect complementary accent colour – yellow with purple, red with green and orange with blue.

Resene Smiles 



Get the look: Resene Ferris Wheel



words  
LeeAnn Yare



pictures  
Larnie Nicolson

For more tips, advice and inspiration see  
[www.resene.com](http://www.resene.com) and  
[www.habitatbyresene.com](http://www.habitatbyresene.com)

Colours are as close as the printing process allows. Always try a Resene testpot or view a physical colour sample before making your final choice.



## frame it

Strong orange adds to the fun, casual feel of this bathroom, especially teamed with plywood cabinets. Used as a feature wall, it visually anchors the vanity and cool circular mirror.

**tip** Use Resene Aquaclear to protect interior timber from wear and tear, and help it stay looking good for longer.

Resene Hi Jinx 

Get the look: Resene Hyperactive



Resene Yabbadabbadoo



Resene Rocket





Resene Sea World

**tip** Don't be scared of using more than one shade of a colour all in the one room. Avoid being overly matchy, for example a clean yellow works well with both lime and soft custard. Just keep them in the same tonal range.

**tip** Check out the Resene KidzColour collection for a range of clear, bright colours as well as some softer pastels.

**tip** If you're using bold colours on furniture, use gloss Resene Enamacryl for good wear and tear, and to make sure the colour keeps looking crisp.

Resene Wham 

Resene Black White 

get the look with Resene

**Resene**

the paint the professionals use