



Seeing colour – Humans

Resene

the paint the professionals use

**Learn more about colour with the Resene Everywhere
colour series. Modules include:**

Changing colour
Colour wheels
Colour and nature
Colour in art
Colour of light
Decorating colour
Dissolving colour
Dotted colour
Everywhere colour
Eyes and rainbows
Filtering colour
Illusion and tricks with colour
Making colour - Dye
Mixing colour
Reflecting colour
Safety colour
Seeing colour - Animals
Seeing colour - Humans

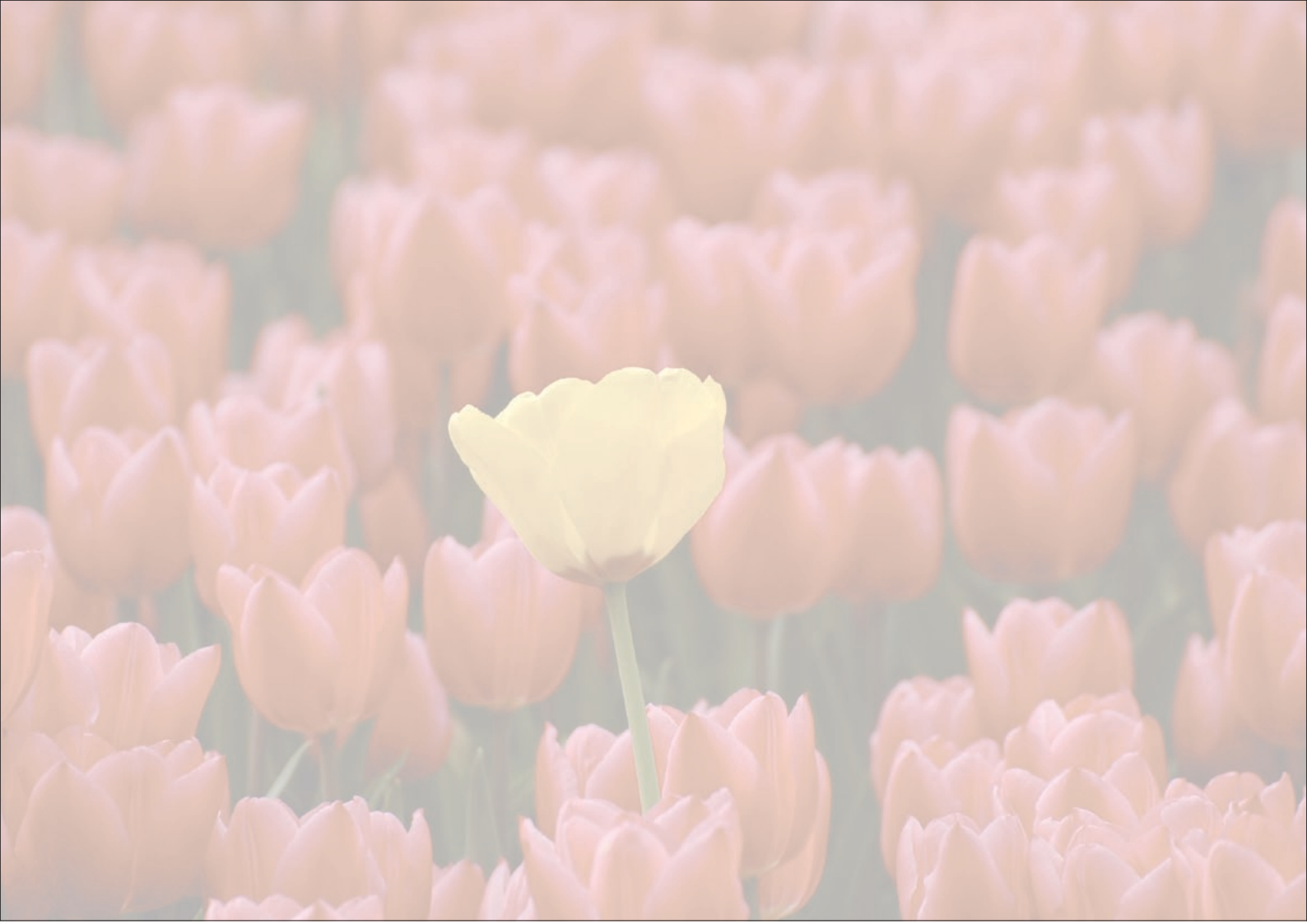
In Australia:
PO Box 785, Ashmore City, Queensland 4214
Call 1800 738 383, visit www.resene.com.au
or email us at advice@resene.com.au

Resene

the paint the professionals use

In New Zealand:
PO Box 38242, Wellington Mail Centre, Lower Hutt 5045
Call 0800 RESENE (737 363), visit www.resene.co.nz
or email us at advice@resene.co.nz

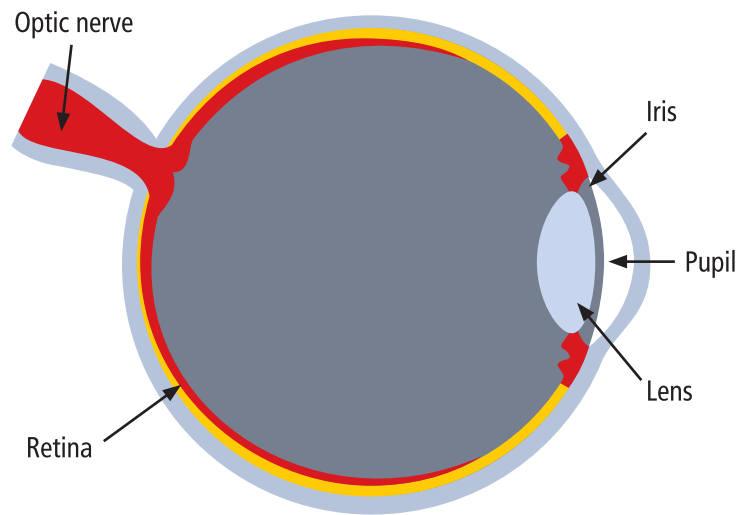
Colours printed as close as printing process allows.



Seeing colour - Humans

Humans can see differences in the wavelengths of colours. This helps us to tell colours apart. Special cells on the retinas of our eyes detect red, green and blue colours in light, as well as black and white, which helps us see at night when there is little light.

These special cells are called cones, because they are cone shaped. Different cones understand different colours so that some cones will detect red light, some cones will detect blue light and some cones will detect green light. The cones tell the brain what colours they are seeing and our brain puts all the information together. This is how we can see all the colours we do.



Light travels in waves. Our eyes can only see light in the visible spectrum, which is made up of all the colours we see in rainbows – red, orange, yellow, green, blue, indigo and violet. Each of these has a different wavelength. This is why they are positioned differently in a rainbow.

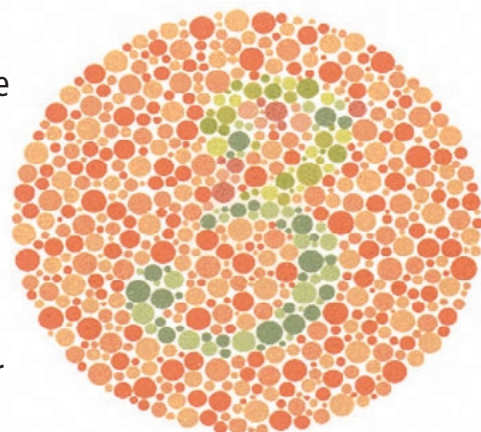
There are two sorts of light we can't see. Ultra-violet light has shorter wavelengths and our eyes can't detect this. This light is used for things like x-rays. Infra-red light has longer wavelengths. We also can't see infra-red light. Infra-red light is used for electronics such as your television remote control and the equipment that scans barcodes when you go shopping.



Colour blind people often cannot tell the difference between certain colours, such as reds and greens. Colour blindness is much more common in males than females. Generally colour blind people can see the differences between some colours but not all colours. It is rare for a colour blind person to only see black, white and greys. Normally colour blind people can still see the differences between blues, yellows and purples.

Colour blindness tests use patterns of colours to test whether the person can see the difference between two colours. A common test uses red and green dots as these are generally difficult for a colour blind person to tell apart.

Try this for yourself – what number can you see displayed in the picture? If you can't see any number you may not have normal colour vision.



Even humans with perfect eyesight see colour differently to each other. You might think a colour is bright red but the person next to you thinks it is dark red.



There are lots of variations of each colour which can mean that there are a lot of colours that can be described the same way. For example, all three of these colours are bright reds but they all look very different. When someone says think of a bright red to you, which one of these do you imagine?