

easy transitions

The classic central hallway of a character villa cries out for a bit of creativity. Often, these hallways are treated quite formally or as an almost forgotten zone, simply a space to pass through. But because halls aren't places you hang around in, they can afford to be visually bold. Use a dark or strong colour, something with wow factor. It should link in some way to other colours in the house, maybe echoed through the house with accessories or furnishings of the same colour.

1 This quiet scheme of varying strengths of Resene Thorndon Cream could serve two purposes – either as a visual link to the rest of an interior which would also be fairly neutral, or it could be a restful contrast or neutral backbone to stronger colours used in the rooms that lead off it. **Resene Double Thorndon Cream** is used on the walls, **Resene Half Thorndon Cream** is on the skirting and architraves, while **Resene Quarter Thorndon Cream** is used on the ceiling.

2 A contemporary and fairly masculine scheme of black and grey finds **Resene Black** used on the left-hand wall to create a

strong spine of colour. It also offsets the hall table and chairs, which are used as a focal point to help visually break up a long hall such as this. As a true achromatic scheme, the Resene Black is joined by **Resene Concrete** on the other walls, and **Resene Black White** on the trims and ceiling.

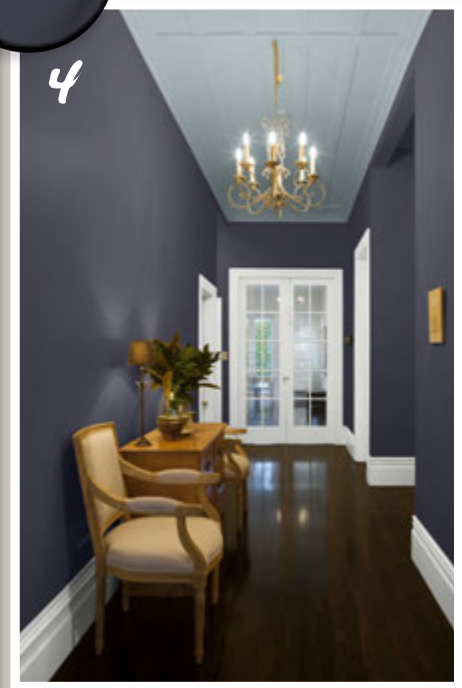
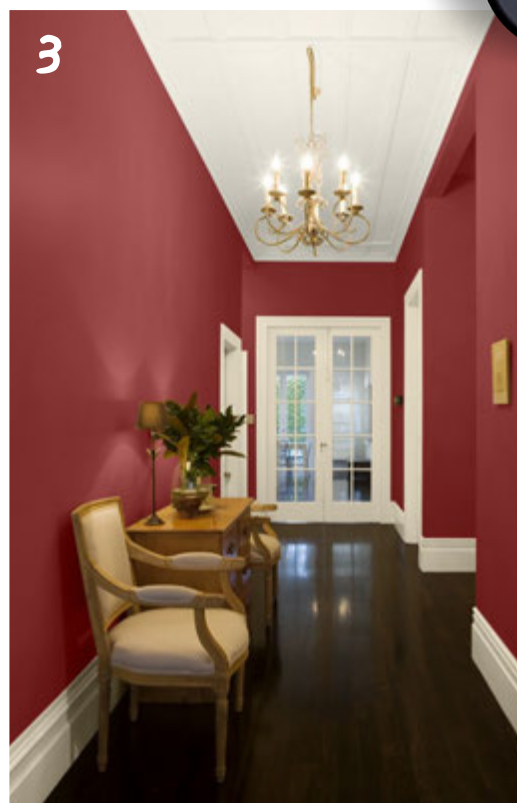
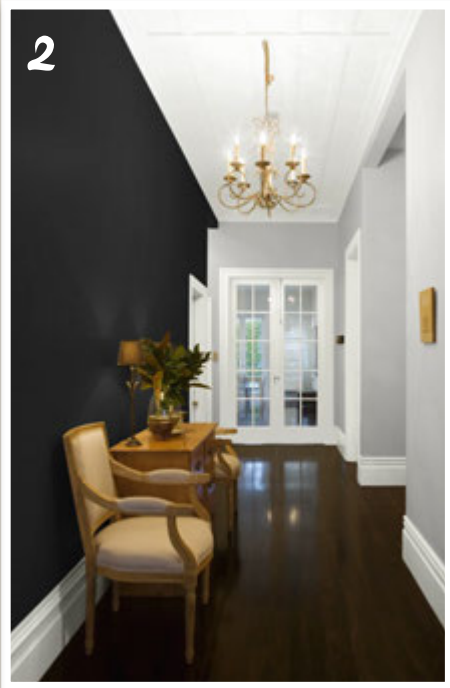
3 A more traditional yet bold approach uses **Resene Tall Poppy** for the walls. This deep rich red is warm and welcoming and gives a more contemporary look to the classic rust reds or burgundies seen in heritage-style villas. **Resene Eighth Wheatfield** is a dry flaxen white, tinged with green on the ceiling while the pale hemp tones of **Resene Quarter Sisal** are used on the trims.

4 Using colour on the ceilings is an emerging trend, exemplified in this adventurous and fun scheme with the pale grey-blue pastel of **Resene Casper**. Who would have thought a smoky blue could look so good alongside walls in **Resene Gun Powder**? The trick is in them both being muted, slightly greyed tones. As a crisp counterpoint, the skirting and architraves are in **Resene Half House White**.

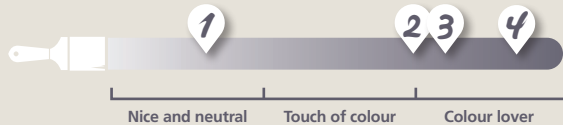


Resene Double Thorndon Cream

Resene
Gun Powder



Resene Half
Thorndon Cream



did you know...

Resene Casper

that hallways such as this are great spaces for feature pendant lights, whether that's an ornate chandelier, a large colourful drum shade, or something arty and contemporary?