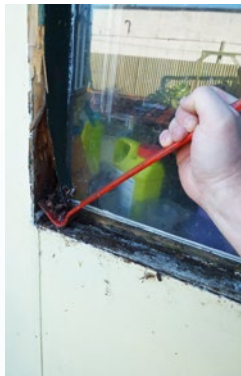


★★★ Difficulty level ★ easy ★★ moderate ★★★ challenging

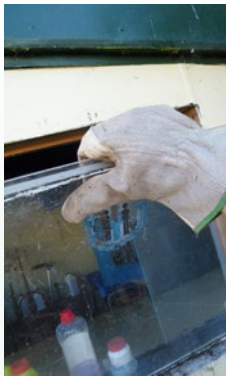
Weekend DIY with Mark Rayner – 38

You will need:

- 60mm galvanised nails
- Crowbar (or similar tool) for removing rotten wood
- Flexible filler (exterior)
- Gloves
- Hammer
- Resene Lumbersider tinted to Resene Soft Apple
- Resene Lustacryl tinted to Resene Woodstock
- Resene Quick Dry
- Treated timber to hold window in place (ours measured approximately 25mm x 50mm)
- Wooden framed window (cut to same size as existing opening)



Step one
Carefully remove any rotten wood from around the pane of glass.



Step two
Wearing gloves for safety, carefully remove the pane of glass.



Step three
Fit the wooden framed window into position, as shown.



Step four
Measure, mark and cut pieces of treated timber to keep window frame in position, as shown. Sand rough edges and fix with galvanised nails.



Step five
Fill any gaps and seal around the window with flexible filler. Allow to cure.



Step six
Wash any existing painted areas and, once dry, prime the window frame and bare wood with one coat of Resene Quick Dry. Allow two hours to dry.

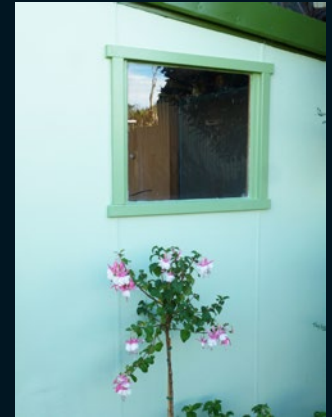


Step seven
Apply two coats of Resene Woodstock to the window frame and surround, allowing two hours for each coat to dry.



Step eight
Apply two coats of Resene Soft Apple to the shed walls, allowing two hours for each coat to dry.

Replace a rotten wooden window and give an outdoor shed a new lease of life with a little bit of help from Resene.



To get the look:
Mark painted the roof trim with Resene Lustacryl tinted to Resene Clover.



Other ideas:
For a fresh coastal look, paint the window frame and surround with Resene Resolution Blue and the shed walls with Resene Anakiwa.

For more ideas and inspiration visit your local Resene ColorShop or www.resene.com/colorshops.

Check out more project ideas online www.resene.com/projects.