

★★★ Difficulty level ★ easy ★★ moderate ★★★ challenging

Ways with wood
with Mark Rayner – 30

Turn a weathered old fence from bleak to chic with Resene Waterborne Woodsman penetrating oil stain.

You will need:

- Bucket
- Container for washing brush
- Garden sprayer
- Paintbrush
- Paint stirrer
- Resene Moss & Mould Killer
- Resene Timber and Deck Wash
- Resene Waterborne Woodsman penetrating oil stain tinted to Resene Pitch Black
- Stiff nylon bristle brush



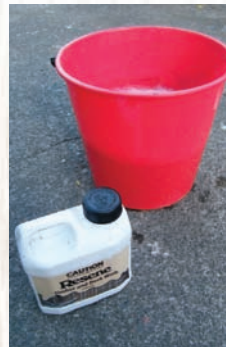
Step one

Fill the garden sprayer with a mix of one part Resene Moss & Mould Killer with five parts water.



Step two

Liberally spray the fence and leave for 48 hours.



Step three

In a bucket, mix one part Resene Timber and Deck Wash with three parts water.



Step four

Saturate the fence and scrub vigorously with a stiff nylon bristle brush. Rinse off with copious amounts of fresh water and leave to dry thoroughly.



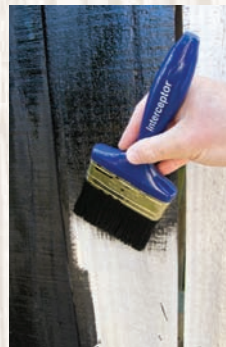
Step five

Stir the Resene Waterborne Woodsman penetrating oil stain with a wide flat stirrer (also stir from time to time during application).



Step six

Apply one coat of Resene Waterborne Woodsman to the top capping rail, brushing in the direction of the grain.



Step seven

Beginning at the top of each fence paling, apply one coat of Resene Waterborne Woodsman, brushing in the direction of the grain. Continue along the fence, saturating the timber and ensuring Resene Waterborne Woodsman penetrates any gaps between the palings.



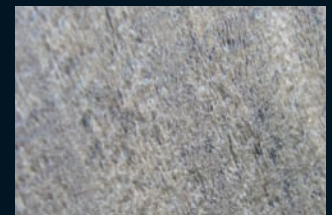
Step eight

Once fully coated, wash the brush in water or wrap in plastic wrap and place in a cool place. Leave for 24 hours and apply a second coat of Resene Waterborne Woodsman.



To get the look:

To finish it off, Mark planted an architectural yucca in front of the fence and mature bamboo behind.



Other ideas:

For a rich dark green effect use Resene Waterborne Woodsman tinted to Resene Rangitoto.

For more ideas and inspiration visit your local Resene ColorShop or the Resene website.