

GET THE GREEN LIGHT

You can use this elegant, sophisticated hue on walls, fabrics or furniture for a cool transformation.

Harmonious, restful and symbolic of new life, green is the signature shade for the eco trend. It has botanic alliances and allusions, whether realised in a bright floral fabric or in an elegantly stylised bamboo-motif wallpaper. Plus, it's versatile.

Often seen as a cool colour, in theory if you add yellow it should warm up. But yellow-greens can be sharp and acidic. To warm a green, add black for a soft, smoky shade, or blue for a sea foam tone. For pale neutrals, those with a green base are popular, such as Resene Rice Cake or Thorndon Cream. Their cool sophistication and complexity mean they complement many styles of interiors.

SWATCH IT

Top to bottom:
Resene Summer Green; Resene Willow Brook; Resene Limerick; Resene Unwind; Resene Wheel Of Fortune.



10 FAVOURITE COLOURS

Make your decorating shine by picking a beautiful colour scheme. It'll lift your mood at home, welcome in your guests and breathe new life into well-worn interiors. Start with our top palette picks – you'll learn how to use different colours as accents, feature walls and much more.

HELLO YELLOW

Go easy and creamy with this bright and bold colour or feature it on a door or kitchen splashback for a little heat.

COLOURING IN

Left to right: Resene Happy; Resene Buttermilk; Resene Turbo; Resene Quarter Moonbeam; Resene Wild Thing.

As happy as sunshine, yellow is the colour of spring and summer, and of warmth and cheeriness. It can bring brightness to your life and make you smile. So why don't we see more of it in interiors? The hue is one of the most vivid in the spectrum, so it can be tricky to use. Go bold for accents like a kitchen splashback, feature door, furniture or wall – try Resene Turbo. You only need a little to transform a room. When used on the walls of a room, yellow reflects off itself so the look of it intensifies even more.

If in doubt, choose a softer, creamier tone. It can also become acidic quite quickly, so unless that's the look you're after, veer towards softer, more wheaten tones.





Resene
the paint the professionals use

BLUE FOR YOU

It's the classic for clean finishes, or an alternative to white walls.

So you thought blue was just for the boys? Think again. Apparently it's the least gender-specific colour around. It's popular for paint as it brings a sense of calm and peacefulness, regardless of the trends.

Predominantly cool, it can stand being used in sunny, north-facing rooms. It's a classic choice for bathrooms because of its feeling of cleanliness. Try pale blue and white for a classic Cape Cod look, or for a crisp, clean kitchen.

Weathered blues, such as Resene Duck Egg Blue, are popular as a timeless alternative to white walls, and can be easily accessorised as the seasons change.

Indulge the new craze towards darker interiors with a deep tone for a rich and refined living room or bedroom. It doesn't always have to be soft and relaxing, it can be bold and daring too. Think bright walls accented with vibrant hues or layers of blue.

THE ONE FOR YOU
Clockwise (from far left): Resene Nauti; Resene Cruising; Resene Resolution Blue; Resene Duck Egg Blue; Resene Coast.



PURPLE POWER

Your go-to for regal and glamorous, this is as rich as you'll find on the colour wheel.

Purple is fearless, and the colour of royalty, luxury and glamour. It gives a level of richness few other colours can achieve.

The key to using purple is to get just the right tone and amount. A true violet is certainly strong, but if you add deep red, you'll have eggplant and mulberry, which are easier to deal with.

Rich shades look great with metallics. With glass and silver or chrome, it creates a showy lusciousness. If you pair it with tarnished golds and bronzes, the room will take on an aged, regal feel.

Timber has similar amber tones to gold, so it also looks good alongside purple, whether you use it on the floor or through furniture.

Deep purple and charcoal gives a room a lush, urban look. Charcoal can be quite masculine and serious, but purple gives the scheme a playful, sensuous twist.

Highlights of purples complemented with more neutral tones can look elegant. If you're game, a purple ceiling with neutral walls can look wonderfully contemporary. ▶



PICK ME
Top to bottom: Resene Sassy; Resene Wonderland; Resene Ringo; Resene Melodic; Resene Mozart.



If you're planning to use lavender on all walls in a room, choose a muddied shade.



SOFT SELECTION
Clockwise (from bottom left): Resene Alluring; Resene London Hue; Resene Fog; Resene Essence; Resene Balance.

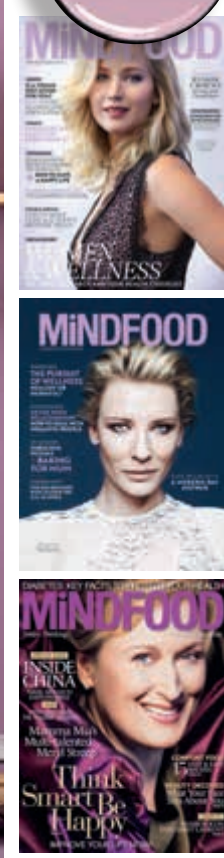


LOVELY LAVENDER
Sit back and relax with the soft, soothing tones dreams are made of.

If you add grey to mauve purple, you end up with soft lavender tones. These are a soothing respite from busy life, and work well in rooms you want to relax in: the living areas and bedrooms. It's more warming and embracing than plain white walls, while still easy on the senses.

You can add deeper accents with furniture, cushions and accessories or keep things light and fresh by complementing with other pastels. Combine soft greyed lavenders with eggshell blues and dusky creams for a dreamy, French-inspired interior. Or freshen it with white trims and joinery.

Weathered lavenders tend to be easier to live with than colours that are too sweet. If you're planning to use it on all walls in a room or in a sunny area, choose a more muddied shade.



PAINT THE TOWN

Top to bottom:
Resene Del Toro;
Resene Rapture;
Resene Pohutukawa;
Resene Fugitive;
Resene Poppy.

A RED LETTER SHADE

Paint a statement bedroom wall or the front door for opulence and

It's not just a fashion thing – the colour red seems to be a perennial favourite in this part of the world, too. Maybe it's the saturated, strong quality of our light, or the brightly flowering pohutukawa trees to which we've grown so attached. We happily wear, paint our walls, drive in and accessorise our house with red. A red front door or entrance lends a feeling of luxury and opulence. It's associated with passion, energy and a healthy appetite.

Although it's a passionate colour, beware of using too much in the bedroom. Try it as a statement wall behind the bed, so it won't be overpowering.

In interiors, red has often been used as a feature wall, a backdrop of strong colour at one end of a room. It's a good solution for those who find red too overpowering on all their walls.

The colour stimulates appetite, so restaurants love it – and at home we can do the same in our dining rooms. Fiery orange-reds also make for a great statement in the living room, especially when teamed with contemporary furniture.





ORANGE GLOW

Channel the warmth to make your rooms inviting and smile-worthy.

Fun, sassy, playful, optimistic and energetic. Orange is such an irrepressibly cheerful colour that it makes most of us grin.

It's a hugely adaptable hue, which transcends the seasons. In its pale bright form it's a peppy spring and summer shade, but turn it pumpkin or rust and it becomes quite autumnal and wintry.

Orange complements blue – turquoise, teal, ice blue, true blue, slate blue – because they sit opposite each other on the colour wheel. Make sure you test your combination to get the saturation and balance right.

Because of its strength, it has often been reserved for use as an accent for a feature wall or splashback. Go all out in your kitchen space, where the hues warmth can be channelled to create an inviting social space.

Orange also has a cool retro appeal that goes with mid-century style interiors.

TINT ME HAPPY

Top to bottom:
Resene Sunshade;
Resene Daredevil;
Resene Clockwork
Orange;
Resene Outrageous;
Resene California.



GOOD AS GOLD

This is the winner when you're after a little bling, or to turn up the heat. Pair with rich reds and blues.

Gold comes in both standard colours and metallic, so you can choose the amount of bling that suits your space.

Resene metallic finishes are popular for kitchen splashbacks, feature walls and furniture. If you're planning to use gold on a larger area you may want to consider choosing a gold-hued paint to bring out the warmth of gold with a little less shine.

While gold can be used in a scheme on its own by layering up various types of gold, it is more common to see it used with other colours. To add richness, metallic golds work well with bold reds, blues, blacks and purples. Pair softer painted golden shades with natural timbers for a traditional villa look.

Like yellow, gold does tend to intensify when used indoors. If in doubt, choose a lighter colour. ▶



LAYER IT

Top to bottom: Resene Good as gold; Resene Gold Dust; Resene Astra; Resene Fuel Yellow; Resene Tussock.





Resene

the paint the professionals use

THE WHITE IS RIGHT

A team player with most other colours, it reflects surrounding shades and light.

There is a definite trend towards blackened whites, with colours like Resene Black White and Resene Alabaster topping the Resene popular colours list. They are hugely versatile inside and out, and can be coupled with most other colours.

The Resene Whites & Neutrals collection has up to six colour strengths of each off-white, so you can easily create a tonal scheme by varying the strength of your chosen shade.

Unlike bolder colours that tend to hold their own, off-whites will reflect other colours in the room. Always test your colour well with a Resene testpot in the area you are planning to decorate so you can see how the other shades in the room and the natural lighting will affect how the colour looks.

An off-white used on a ceiling will look darker than it will on a wall, so use a half strength of the wall colour on your ceiling for balance.



OFF OR ON

Clockwise (from bottom left): Resene Rice Cake; Resene Sea Fog; Resene Black White; Resene White Pointer; Resene Alabaster.



GET THE LOOK
Visit your local Resene ColorShop or go to resene.co.nz for more ideas and inspiration.



TICKLED PINK

Love the vintage look? Bring in the trend with cushions, wallpaper and more.

Painting a feature wall or a piece of furniture is a great way to embrace pink. It suits the current fashion for vintage interiors.

Cushions, wallpaper and rugs are devices that can weave in pink tones without going overboard. If you're still wary of committing, start with flowers – an arrangement is less likely to appear too girly or gaudy, and gives you a chance to decide if you like the shade in your home.

If you team pink with lighter neutrals, you will achieve a softer, more romantic vibe. Darker combinations can make pink appear more dramatic.

Plus, when light reflects off pink walls, you'll look rosy and healthy – cheaper than any high-tech face cream!



COLOURS TO BLUSH ABOUT

Top to bottom: Resene New York Pink; Resene Wax Flower; Resene Ebb; Resene Suzie Q; Resene Turkish Delight.

