



Create this metallic masterpiece using a combination of soft gold Resene colours.

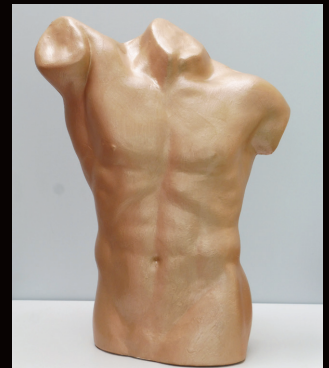
★★★ Difficulty level ★ easy ★★ moderate ★★★ challenging

Resene art with Mark Rayner – 98

You will need:

- Bisqued torso form*
- Clean damp cloth
- Paint stirrer
- Paintbrush
- Resene FX Metallic tinted to Resene Rose Gold
- Resene Lumbersider tinted to Resene Kalgoorie Sands
- Resene Terracotta Sealer

*A bisqued form is porous so we used Resene Terracotta Sealer, but if you are painting a glazed form then prime with Resene Waterborne Smooth Surface Sealer.



To get the look: Mark painted the background wall with Resene SpaceCote Flat tinted to Resene Silver Chalice.



Step one
Thoroughly clean the torso form with a damp cloth and allow to dry.



Step two
Carefully stir the Resene Terracotta Sealer.



Step three
Apply one coat of Resene Terracotta Sealer to the torso form and allow to dry.



Step four
Carefully stir the Resene Lumbersider tinted to Resene Kalgoorie Sands.



Step five
Apply one coat of Resene Lumbersider tinted to Resene Kalgoorie Sands to the torso form and allow to dry.



Step six
Carefully stir the Resene FX Metallic tinted to Resene Rose Gold.



Step seven
Apply one coat of Resene FX Metallic tinted to Resene Rose Gold to the torso form and allow to dry.



Step eight
Apply a second coat of Resene FX Metallic tinted to Resene Rose Gold to the torso form and allow to dry.



Other ideas:
For a copper effect paint the torso with a basecoat of Resene Wild West and two topcoats of Resene Copper Fire.

For more ideas and inspiration visit your local Resene ColorShop or www.resene.com/colorshops.

Check out more project ideas online www.resene.com/projects.