

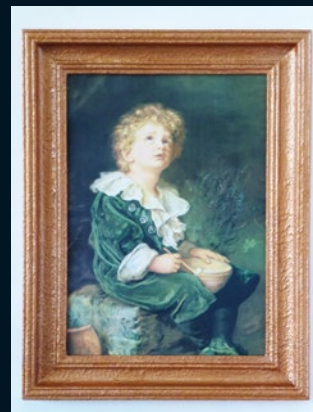
★★★ Difficulty level ★ easy ★★ moderate ★★★ challenging

Resene art with Mark Rayner – 72

### You will need:

- Clean cloth
- Paintbrush
- Paint stirrer
- Resene Aquaclear gloss
- Resene Quick Dry
- Resene Sandtex
- Resene testpots of Resene Bullion and Resene Porsche
- Sandpaper
- Wooden picture frame

Create this fabulous textured gilt frame using a clever combination of Resene paints.



### To get the look:

Mark painted the background wall with Resene SpaceCote Flat tinted to Resene Quarter Cararra.



**Step one**  
Lightly sand the wooden frame.



**Step two**  
Wipe off any sanding residue with a clean cloth.



**Step three**  
Apply one coat of Resene Quick Dry to the wooden frame and allow to dry for two hours.



**Step four**  
Carefully stir the Resene Sandtex.



**Step five**  
Apply one generous coat of Resene Sandtex to the front and side edges of the frame, dabbing the paint to create a textured look. Allow to dry.



**Step six**  
Apply one coat of Resene Porsche to the front and side edges of the frame and allow two hours to dry.



**Step seven**  
Apply two coats of Resene Bullion to the front and side edges of the frame, allowing two hours for each coat to dry.



**Step eight**  
Apply three coats of Resene Aquaclear to the front and side edges of the frame. Allow two hours for each coat to dry.



### Other ideas:

For a fresh retro look paint the frame with one coat of Resene Sandtex followed by two coats of Resene Gin Fizz.

For more ideas and inspiration visit your local Resene ColorShop or [www.resene.com/colorshops](http://www.resene.com/colorshops).

Check out our special Artists' section online [www.resene.com/artists](http://www.resene.com/artists).