

★☆☆ Difficulty level ★ easy ★★ moderate ★★★ challenging

Resene art with Mark Rayner – 55

You will need:

- 6mm marine ply
- Container for mixing PVA
- Old wooden picture frame
- Paintbrushes (including a medium artists' brush)
- Paint stirrer
- Pencil
- PVA glue
- Resene Aquaclear gloss
- Resene Colorwood Whitewash
- Resene testpot of Resene Colorwood Oregon
- Retro portrait print cut from an old art magazine
- Ruler
- Sandpaper
- Saw



Step one

Measure, mark and cut the marine ply to fit the frame. Smooth any rough edges with sandpaper.



Step two

Lightly sand the picture frame.



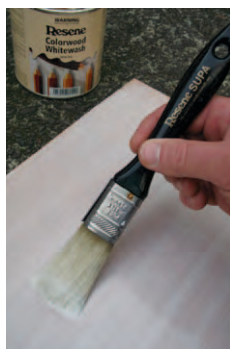
Step three

Apply one coat of Resene Colorwood Oregon to the picture frame and allow to dry.



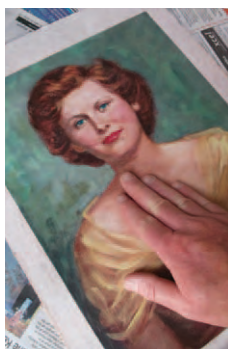
Step four

Carefully stir the Resene Colorwood Whitewash.



Step five

Apply one coat of Resene Colorwood Whitewash to the good side of the marine ply, brushing in the direction of the grain. Allow to dry.



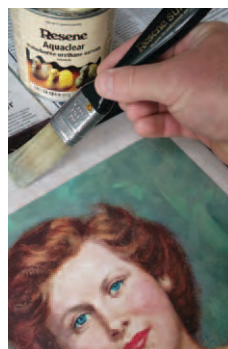
Step six

Dilute some PVA glue with equal parts water and brush onto the back of the print. Allow to soak in for a few minutes and press the print onto the centre of the marine ply, as shown. Allow to dry.



Step seven

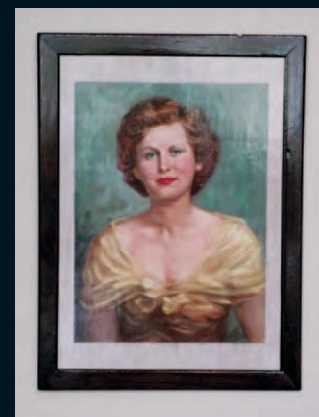
Fix the marine ply into the frame with PVA glue and allow to dry.



Step eight

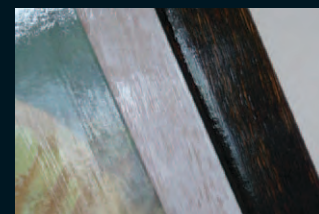
Apply two coats of Resene Aquaclear gloss to the picture, marine ply and frame, allowing two hours for each coat to dry.

Turn an old portrait print from an art magazine into a retro masterpiece with a little bit of help from Resene.



To get the look:

Mark painted the background wall with Resene SpaceCote Low Sheen tinted to Resene Thorndon Cream.



Other ideas:

For a bright modern look select a colourful abstract print and stain the frame with Resene Red Pepper.

For more ideas and inspiration visit your local Resene ColorShop or www.resene.co.nz or www.resene.com.au.

Check out our special Artists section online www.resene.co.nz/artists/artists_canvas.htm or www.resene.com.au/artists/artists_canvas.htm.