



Colour my day

Like a favourite coat with a sumptuous silky lining, or a man's business shirt with a hidden paisley inner, splashes of colour and pattern in unexpected places add personality and a little whimsy to our homes. Start with this super easy wardrobe door project

Wardrobe makeover

Add a splash of colour and pattern to the inside of your wardrobe for a visual treat whenever you open the door

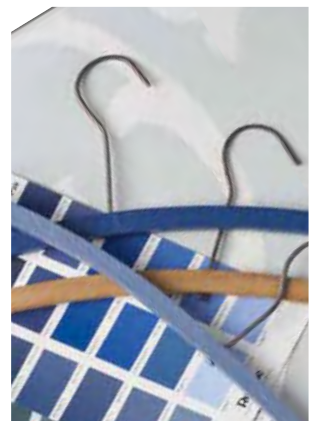


Step 1 Empty the contents of your wardrobe and give the insides of the doors a light sand.

Step 2 Wipe down with a soft cloth. Paint the edges of the door in Resene Lustacryl semi-gloss waterborne enamel in a colour of your choice. We used Resene Moby.

Step 3 Mix wallpaper paste. Cut squares of wallpaper and paste before placing. Resene has an extensive range of wallpapers. We used Habitat 47548.

Step 4 Paint wooden coat hangers in contrasting shades using Resene testpots. We chose Resene Lucky Point and Resene Norwegian Blue



Call 0800 RESENE (737 363)
visit www.resene.co.nz or
email advice@resene.co.nz

Resene

the paint the professionals use

YOU WILL NEED

- Light sandpaper (100 grit) and soft cloth
- Medium sized paintbrush
- Wooden coat hangers
- 1 litre Resene Lustacryl semi-gloss waterborne enamel
- Resene testpots in colours of your choice
- Resene wallpaper
- Shur-Stik wallpaper paste