



# Turning the tables

Give a dull brown table a fresh light look  
using a modern chalk paint effect

WORDS AND STYLING SARAH HEERINGA

# Table makeover

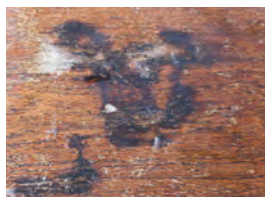
- The surface of the table is varied with areas where the top sealer has worn away.
- Lay a drop cloth. Dilute the Resene Timber and Deck Wash in water as per the instructions and use a heavy duty scouring pad to scrub the entire paintable surface. Use undiluted Wash and extra scrubbing to minimise darker stains.
- Thoroughly clean the paintable surface using water and cloths. Allow to dry.
- Tabletop: Pour about 100ml of Resene SpaceCote Flat waterborne enamel in a shade of your choice into a clean jar. I used Resene Milk White. Add 30ml water and mix well. Using even and spaced strokes, roughly brush the paint over an area of about 1 square metre. (You can also use the paint as is, without thinning,

depending on the look you are after.)

- Use a damp cloth to rub back the paint a little, revealing more of the surface texture. Paint on more paint, or rub it back to achieve the effect you want.
- Dilute the Resene SpaceCote Flat paint by the same approximate ratio of 3:1.
- Paint the underneath and legs of the table using quick rough brush strokes and rub it back using a cloth, especially along the edges to mimic a worn look.
- Allow to fully dry. Topcoat with Resene Cristal Clear Flat Polyurethane for a waxed look. If required, apply a second coat once the first coat is fully dried.



For more great projects go to [www.good.net.nz/athome](http://www.good.net.nz/athome)



## YOU WILL NEED

- A wooden table to upcycle
- Resene Timber and Deck Wash
- Heavy duty scouring pad
- Resene SpaceCote Flat waterborne enamel in a shade of your choice  
I used Resene Milk White
- Resene SpaceCote Flat washable wall and ceiling paint in your chosen shade. I used Resene Unwind
- Resene Cristal Clear Flat Polyurethane
- Dropcloth, gloves and medium -sized paintbrushes



Call 0800 RESENE (737 363)  
visit [www.resene.co.nz](http://www.resene.co.nz)  
or email [advice@resene.co.nz](mailto:advice@resene.co.nz)

# Resene

the paint the professionals use