

# make your own beach cart

Load up this handy trolley with your bucket and spade, boogie boards and towels for a fun day at the beach.



## top tip

Paint your cart using Resene Lumbersider and Resene testpots and create stripes using masking tape. Protect further from the elements using Resene Concrete Clear.

We built this cart with new parts for less than \$150, but it could be even more budget-friendly with upcycled timber and old pram or wheelbarrow wheels. Paint your trolley in bright, fun Resene colours to make a day at the beach even sunnier or paint it to match your vegetable patch and use it for carting around garden tools and paint.

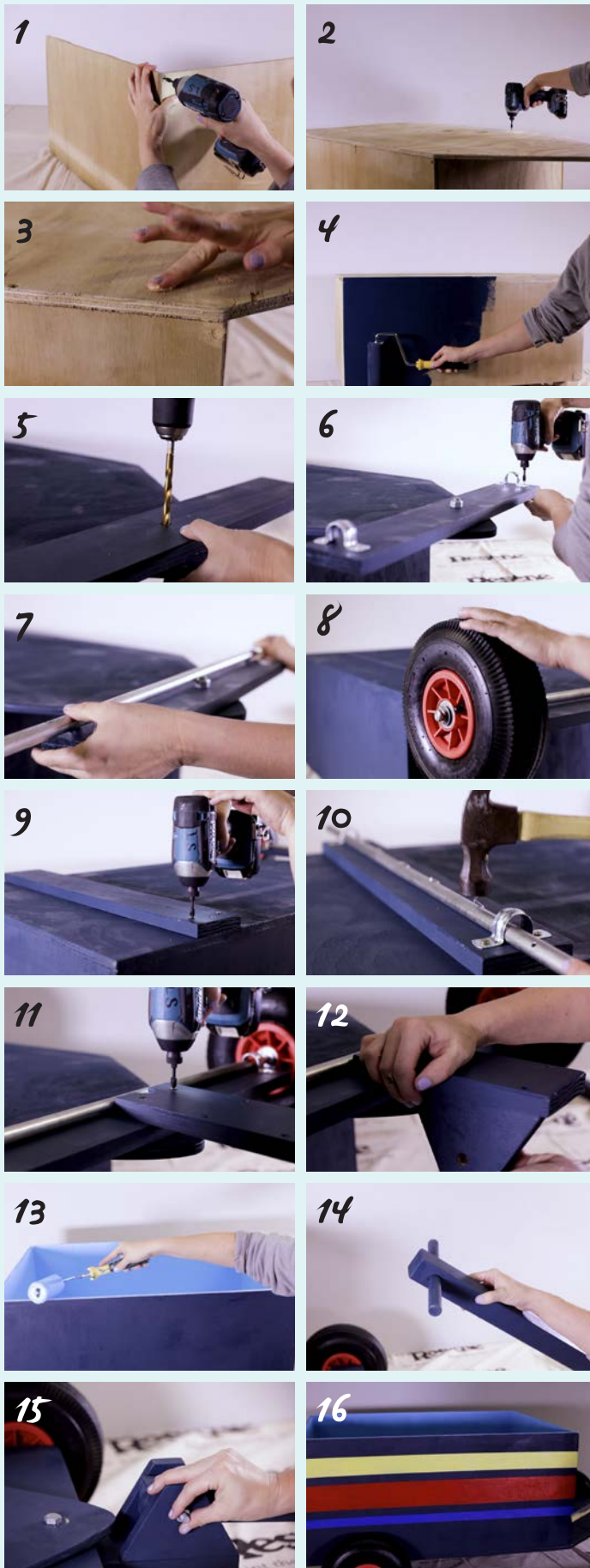
### you will need:

- Timber pieces to make the cart box, tongue, handle and wheel chassis. Visit [www.habitatbyresene.com/beachcart](http://www.habitatbyresene.com/beachcart) for a full cutting list
- Power sander or sandpaper, plus rag for dust clean-up
- Jig saw
- Power drill
- Measuring tape, pencil and ruler
- Drill taps, 8.5mm and 10.2mm
- Flat drill, 25mm
- 4 galvanised saddle clamps, 20mm
- 2 galvanised steel axles, 810mm x 15mm, with 2 x 1mm holes on each side: 6mm in, 75mm between each hole (ours are from Richmond Wheels and Castors, Auckland)
- 4 pneumatic wheels, 250mm, 16mm axle bore
- 8 split pins, 50mm
- Flathead nails (about 40mm)
- 8 flat washers, M1.6
- 4 flat washers, M10
- 4 flat washers, M12
- 1 engineer M10 bolt, 110mm
- 1 engineer M12 bolt, 75mm
- Timber screws, 20mm

### Resene shopping list:

- 1L Resene Lumbersider in your choice of colour – we used two coats of Resene Elephant
- #1 roller and sleeve, 150mm
- Resene testpots in your choice of colours – we used Resene Canary, Resene Red Berry and Resene Resolution Blue
- 1L Resene Concrete Clear
- MacGyver brush, 63mm
- Resene testpot brushes
- Masking tape

**Above:** This handy beach cart is painted in Resene Elephant with stripes in Resene Canary, Resene Resolution Blue and Resene Red Berry. The inside of the cart is in Resene Seagull.



**Step 1:** Cut your wooden pieces using the cutting guide, [www.habitatbyresene.com/beachcart](http://www.habitatbyresene.com/beachcart). Then create a box with pieces 2-5 using a power drill and timber screws.

**Step 2:** Attach box to piece 1.

**Step 3:** Fill in any holes with wood filler, leave to dry then sand. Wipe away any dust with a cloth.

**Step 4:** Paint the box and cut pieces of wood using a roller. Leigh used two coats of Resene Elephant.

**Step 5:** Once dry flip the box over. Place the M12 bolt through the hole at the top of the base and thread piece 6 onto it, using M12 washers between each piece. Secure the bolt with a small bit of give for swivelling.

**Step 6:** Attach saddle clamps on either side of the length of piece 6 about 20mm in from either side to form the axle.

**Step 7:** Secure the axle with box nails placed tightly against and along the axle piece, with the axle piece sitting tightly against one side of the saddle clamps. Hammer the top of the nails so that they sit flush over the axle.

**Step 8:** Attach the wheels to each side in this order: butterfly pin, then washer,

then wheel, then washer, then butterfly pin.

**Step 9:** From the bottom, measure up 140mm on both sides of the width and draw a line across. Sit the bottom of piece 7 flush against the line and screw the piece onto the base.

**Step 10:** Screw the axles onto piece 7, repeating steps 6-8.

**Step 11:** Take piece 8 and screw it to the base of piece 6, lining the semi-circle hole with the bolt.

**Step 12:** Flip the cart over, and screw pieces 9 and 10 on either side of piece 8, at the top.

**Step 13:** Paint the inside of the box. Leigh used two coats of Resene Seagull.

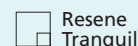
**Step 14:** Place the dowel inside piece 11 at the top hole to make the handle.

**Step 15:** Place the other side of the handle between pieces 9 and 10 and use a M10 bolt and washers to secure together.

**Step 16:** Touch up with Resene Elephant. We also painted stripes of varying sizes in Resene Canary, Resene Red Berry and Resene Resolution Blue for a beachy feel. Finish your cart in Resene Concrete Clear for extra outdoor protection.

For a video on how to make this beach cart, visit [www.habitatbyresene.com/beachcart](http://www.habitatbyresene.com/beachcart).

**project** Leigh Stockton  
**images** Bryce Carleton, Ben Whorwood



### top tip

You can adapt this to be smaller or bigger, depending on your needs. Visit second-hand stores for old wheelbarrows, hand trolleys or prams with working wheels. You can also use timber offcuts, instead of new wood.

