

Little Miss Sunshine

Set a playful scene in a child's bedroom by framing focal points with bright murals

Styling **Amber Armitage**
Photography **Melanie Jenkins**



Back wall Resene SpaceCote Low Sheen in Resene Alabaster. Flower **headboard** painted in Resene SpaceCote Low Sheen in Resene Happy. Aspen **bedside table**, \$129.95, from Mocka, with drawers painted in Resene SpaceCote Low Sheen in Resene Petal, from Resene ColorShops. **Lamp** painted in Resene SpaceCote Low Sheen in Resene Illuminate, with trim in Resene Petal, from Resene ColorShops. Brilliant white linen **duvet**, \$219 (queen), from Foxtrot Home. George Street flora **pillowcases**, \$119 (pair), and Jiggle & Giggle Polly **toy sheep** \$49, both from Allium Interiors. Mimosa muslin **duvet cover**, \$389.50 (double), sunshine **pillow**, \$46.50, **tooth box**, \$36, *The Little Book of Joy*, \$32.99, and dog bucket **bag**, \$84, all from Little Whimsy. ABOVE RIGHT Jute **rug**, \$299.95, Boucle **ottoman**, \$149.95, and willow hanging **basket**, \$79.95, all from Mocka. Stardust **bear**, \$76.95, *Otto the Loyal Long Dog*, \$42.50, and *How to be a Lion*, \$17.99, all from Little Whimsy.



BELOW **Back wall** Resene SpaceCote Low Sheen in Resene Alabaster. **Wave mural** painted in Resene SpaceCote Low Sheen in Resene Petal, from Resene ColorShops. **Bookboy**, \$1229, from Meluka. Miniature floor **lamp**, \$69, **Heidi**, \$52, **Big Panda and Tiny Dragon**, \$35, **The Boy, the Mole, the Fox and the Horse**, \$40, dog bucket **bag**, \$84, Milk x Soda sunglasses, \$36.50, and Weston **storage boxes**, \$25.50 (each), all from Little Whimsy. **Slippers** \$42.90, and Hachiman **tub**, \$38.50, both from Allium Interiors.

STYLIST'S TIP

Make sure the scale of your mural is proportionate to the furniture in front so they look cohesive.



Painting murals in your child's bedroom is a fun and relatively quick way to make their space unique, while highlighting certain features of the room. In this case, the mural makes the bed the room's natural focus, and the shelves become a secondary focal point. When decorating, give children a couple of Resene paint colour choices so they feel they have input.

Choosing a shape

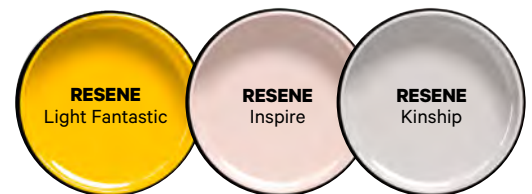
When it comes to colour-blocked murals, organic shapes that are symmetrical are most pleasing. The best way to achieve this is to draw half your shape freehand (for example, the left side) onto cardboard. To get the scale correct, slot the cardboard behind the bed or shelf that the mural will sit with. Draw the shape onto the cardboard, leaving enough space around the furniture so that the mural generously frames it. Cut this shape out, and trace it onto the wall on the left

side. Then flip the cardboard over and trace the right-hand side so it joins in the middle. This will give you a symmetrical shape that still has an organic feel. Using a small angled brush, paint around the shape using your chosen Resene paint to get a clean line, then use a roller to paint the rest so you get even coverage with no brush marks. When choosing the paint colour, think about the finish as well as the shade. You could use the same sheen as the wall or opt for Resene FX Metallic or the higher gloss of Resene Enamacryl waterborne enamel for a more stand out finish.

All things in moderation

When painting furniture in bright colours, it can be easy for DIY to look overdone. The best way to avoid this is to paint only certain parts of the item of furniture, rather than the whole thing. This gives it a bespoke feel. On high wear and tear areas, use a higher sheen paint finish like Resene Lustacryl semi-gloss waterborne enamel.

More Resene colours to try:



Resene

the paint the professionals use

For more kid's room decorating ideas, pick up a free copy of *habitat plus - kids' spaces* from your local Resene ColorShop or reseller - or, view it online at www.resene.com/habitatplus. It's packed full of ideas for how you can bring out the best in your child's play and sleep spaces.